

DATASHEET

PAX5 Rabbit Monoclonal Antibody (ARA636)

CAT. NO. ARA6340

KEY FEATURES

Target	PAX5	Clone ID	ARA636
Source / Host	Rabbit	Reactivity	Human
Applications	IHC	Dilution	1:500-1:1000
Clonality	Monoclonal	Storage	-20°C

BACKGROUND

Paired box 5 (PAX5) is a transcription factor encoded by the PAX5 gene and is a specific marker for B-cell lineage in lymphoid tissues. It is expressed in pro-B cells to mature B cells, and is essential for the maintenance of B-cell identity and function.

APPLICATION

To ensure optimal assay performance, AREX recommends conducting reagent titration tailored to each testing system for optimal detection results.

Application	IHC
Dilution Ratio	1:500-1:1000

*Results are sample-specific. Please refer to your local assay conditions and test parameters for reference.

PRODUCT OVERVIEW

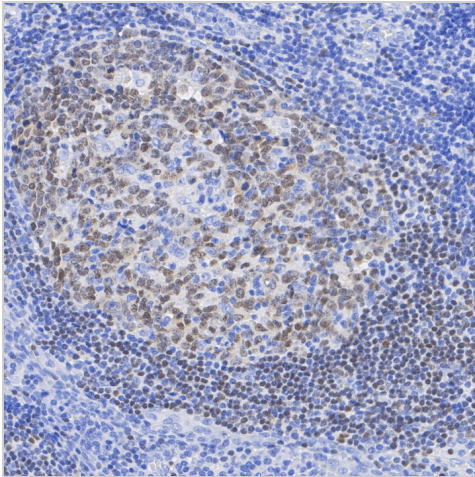
Antibody Type	Primary antibodies
Isotype	IgG
Molecular Weight	Predicted band size: 42 kDa
Positive Control	Daudi cell lysate, Raji cell lysate, A20 cell lysate, Daudi, human appendix tissue, human B cell lymphoma tissue, human tonsil tissue, mouse spleen tissue, rat spleen tissue, A20.
Localization	Nucleus.
Form / Buffer	PBS (pH7.4), 0.1% BSA, 40% Glycerol. Preservative: 0.05% Sodium Azide.
Purification	Protein A affinity purified.
Immunogen	Recombinant protein within human PAX5 aa 101-391.
UniProt	Q02548(Human);Q02650(Mouse);
Alternative Names	B cell lineage specific activator antibody; B cell lineage specific activator protein antibody; B cell specific activator protein antibody; B cell specific transcription factor antibody; B-cell-specific transcription factor antibody; BSAP antibody; EBB-1 antibody; KLP antibody; Paired box 5 antibody; Paired box gene 5 (B cell lineage specific activator protein) antibody; Paired box gene 5 (B cell lineage specific activator) antibody; Paired box gene 5 antibody; Paired box homeotic gene 5 antibody; Paired box protein Pax 5 antibody; Paired box protein Pax-5 antibody; Paired domain gene 5 antibody; PAX 5 antibody; PAX5 antibody; PAX5_HUMAN antibody; Transcription factor PAX 5 antibody

*AREX continuously optimizes our products. Webpage content may not reflect the latest updates. For inquiries, please contact info@arexbio.com or your local distributor.

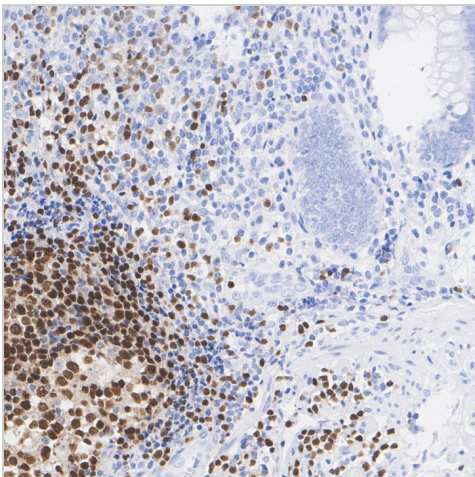
*Clone Number, Reactivity, Source/Host and Clonality can be found in the product name and Key Features section above.

DATASHEET**PAX5 Rabbit Monoclonal Antibody (ARA636)**

CAT. NO. ARA6340

DATA

Immunohistochemical analysis of paraffin-embedded human tonsil tissue using Pax-5 Rabbit Monoclonal Antibody (ARA636), AREXB.



Immunohistochemical analysis of paraffin-embedded human appendix tissue with Pax-5 Rabbit Monoclonal Antibody (ARA636).

STORAGE

Shipped at 4°C. Store at -20°C for one year. Avoid repeated freeze/thaw cycles.

RESEARCH USE ONLY

For Research Use Only. Not for diagnostic, therapeutics, prophylactic or in vivo use.

More information: www.arexbio.com