

DATASHEET

ER Rabbit Monoclonal Antibody (ARA637)

CAT. NO. ARA6341

KEY FEATURES

Target	ER	Clone ID	ARA637
Source / Host	Rabbit	Reactivity	Human
Applications	IHC	Dilution	1:500-1:1000
Clonality	Monoclonal	Storage	-20°C

BACKGROUND

Estrogen receptor (ER) belongs to the steroid receptor superfamily of nuclear receptors, a protein with 553 amino acids that mediates regulatory functions of female sex steroids (mainly E2) on growth, differentiation and function in several target tissues including the female and male reproductive tract, mammary gland

APPLICATION

To ensure optimal assay performance, AREX recommends conducting reagent titration tailored to each testing system for optimal detection results.

Application	IHC
Dilution Ratio	1:500-1:1000

*Results are sample-specific. Please refer to your local assay conditions and test parameters for reference.

PRODUCT OVERVIEW

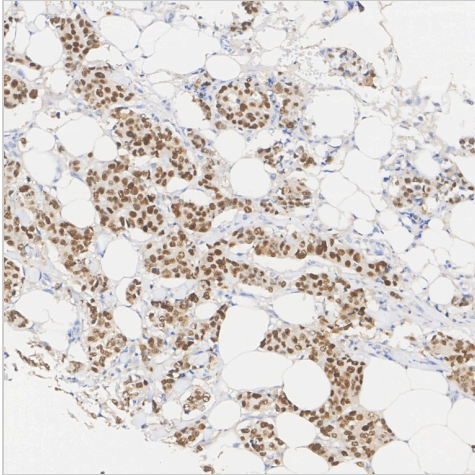
Antibody Type	Primary antibodies
Isotype	IgG
Molecular Weight	Predicted band size: 66 kDa
Positive Control	Human breast tissue, human cervix tissue, human breast carcinoma tissue, human endometrium tissue.
Localization	Cell membrane, Nucleus, Cytoplasm.
Form / Buffer	PBS (pH7.4), 0.1% BSA, 40% Glycerol. Preservative: 0.05% Sodium Azide.
Purification	Protein A affinity purified.
Immunogen	Synthetic peptide within Human Estrogen Receptor alpha aa 300-595 / 595.
UniProt	P03372(Human);
Alternative Names	7*/654 isoform antibody; 7*/819 2 isoform antibody; 7*/822 isoform antibody; 8*/901 isoform antibody; 8*/941 isoform antibody; DKFZp686N23123 antibody; ER alpha antibody; ER antibody; ER-alpha antibody; Era antibody; ESR antibody; ESR1 antibody; ESR1_HUMAN antibody; ESRA antibody; Estradiol receptor antibody; Estrogen nuclear receptor alpha antibody; Estrogen receptor 1 antibody; Estrogen receptor alpha 3*,4,5,6,7*/822 isoform antibody; Estrogen receptor alpha antibody; Estrogen receptor alpha delta 3*,4,5,6,7*,8*/941 isoform antibody; Estrogen receptor alpha delta 3*,4,5,6,7*/819 2 isoform antibody; Estrogen receptor alpha delta 4 +49 isoform antibody; Estrogen receptor alpha delta 4*,5,6,7*/654 isoform antibody; Estrogen receptor alpha delta 4*,5,6,7,8*/901 isoform antibody; Estrogen receptor alpha E1 E2 1 2 antibody; Estrogen receptor alpha E1 N2 E2 1 2 antibody; Estrogen receptor antibody; ESTRR antibody; NR3A1 antibody; Nuclear receptor subfamily 3 group A member 1 antibody

*AREX continuously optimizes our products. Webpage content may not reflect the latest updates. For inquiries, please contact info@arexbio.com or your local distributor.

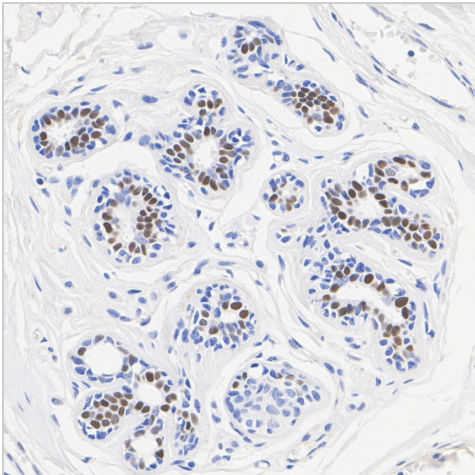
*Clone Number, Reactivity, Source/Host and Clonality can be found in the product name and Key Features section above.

DATASHEET**ER Rabbit Monoclonal Antibody (ARA637)**

CAT. NO. ARA6341

DATA

Immunohistochemical analysis of paraffin-embedded human breast cancer tissue with ER Rabbit Monoclonal Antibody (ARA637).



Immunohistochemical analysis of paraffin-embedded human breast tissue with ER Rabbit Monoclonal Antibody (ARA637).

STORAGE

Shipped at 4°C. Store at -20°C for one year. Avoid repeated freeze/thaw cycles.

RESEARCH USE ONLY

For Research Use Only. Not for diagnostic, therapeutics, prophylactic or in vivo use.

More information: www.arexbio.com