

DATASHEET

Granzyme B Rabbit Monoclonal Antibody (ARA638)

CAT. NO. ARA6342

KEY FEATURES

Target	Granzyme B	Clone ID	ARA638
Source / Host	Rabbit	Reactivity	Human
Applications	IHC	Dilution	1:500-1:1000
Clonality	Monoclonal	Storage	-20°C

BACKGROUND

Granzyme B (GrB) is one of the serine protease granzymes most commonly found in the granules of natural killer cells (NK cells) and cytotoxic T cells, secreted along with perforin to mediate apoptosis in target cells.

APPLICATION

To ensure optimal assay performance, AREX recommends conducting reagent titration tailored to each testing system for optimal detection results.

Application	IHC
Dilution Ratio	1:500-1:1000

*Results are sample-specific. Please refer to your local assay conditions and test parameters for reference.

PRODUCT OVERVIEW

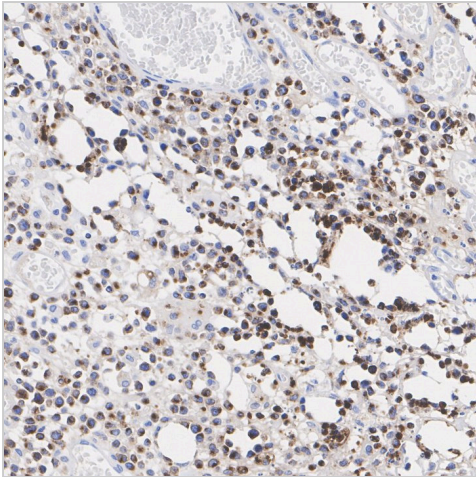
Antibody Type	Primary antibodies
Isotype	IgG
Molecular Weight	Predicted band size: 28 kDa
Positive Control	NK-92 cell lysate, CTLL-2 cell lysate, human NK/T-cell lymphoma tissue, human spleen tissue.
Localization	Secreted, Cytolytic granule.
Form / Buffer	1*PBS (pH7.4), 0.1% BSA, 40% Glycerol, 0.2% Proclean 950.
Purification	Protein A affinity purified.
Immunogen	Recombinant protein within human Granzyme B aa 1-247.
UniProt	P10144(Human);P04187(Mouse);
Alternative Names	C11 antibody; Cathepsin G like 1 antibody; Cathepsin G-like 1 antibody; CCPI antibody; CGL 1 antibody; CGL1 antibody; CSP B antibody; CSPB antibody; CTLA 1 antibody; CTLA-1 antibody; CTLA1 antibody; CTSGL1 antibody; Cytotoxic serine protease B antibody; Cytotoxic T lymphocyte associated serine esterase 1 antibody; Cytotoxic T lymphocyte proteinase 2 antibody; Cytotoxic T-lymphocyte proteinase 2 antibody; Fragmentin 2 antibody; Fragmentin-2 antibody; GRAB_HUMAN antibody; Granzyme 2 antibody; Granzyme B (granzyme 2, cytotoxic T lymphocyte associated serine esterase 1) antibody; Granzyme B antibody; Granzyme-2 antibody; GranzymeB antibody; GRB antibody; Gzmb antibody; Hlp antibody; Human lymphocyte protein antibody; Lymphocyte protease antibody; Protease, serine, B antibody; SECT antibody; T cell serine protease 1 3E antibody; T cell serine protease 1-3E antibody; T-cell serine protease 1-3E antibody

*AREX continuously optimizes our products. Webpage content may not reflect the latest updates. For inquiries, please contact info@arexbio.com or your local distributor.

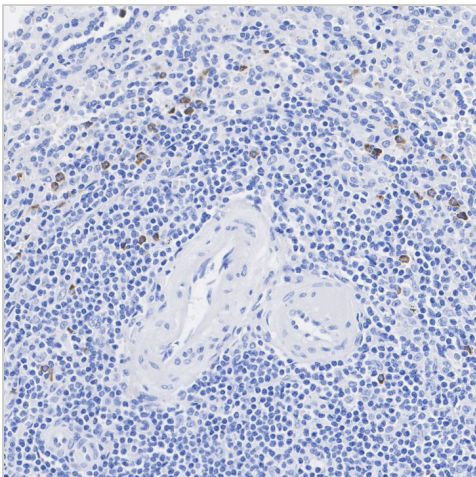
*Clone Number, Reactivity, Source/Host and Clonality can be found in the product name and Key Features section above.

DATASHEET**Granzyme B Rabbit Monoclonal Antibody (ARA638)**

CAT. NO. ARA6342

DATA

Immunohistochemical analysis of paraffin-embedded human NK/T-cell lymphoma tissue with Granzyme B Rabbit Monoclonal Antibody (ARA638).



Immunohistochemical analysis of paraffin-embedded human spleen tissue with Granzyme B Rabbit Monoclonal Antibody (ARA638).

STORAGE

Shipped at 4°C. Store at -20°C for one year. Avoid repeated freeze/thaw cycles.

RESEARCH USE ONLY

For Research Use Only. Not for diagnostic, therapeutics, prophylactic or in vivo use.

More information: www.arexbio.com