

DATASHEET

LOM2 Rabbit Monoclonal Antibody (ARA640)

CAT. NO. ARA6344

KEY FEATURES

Target	LOM2	Clone ID	ARA640
Source / Host	Rabbit	Reactivity	Human
Applications	IHC	Dilution	1:500-1:1000
Clonality	Monoclonal	Storage	-20°C

BACKGROUND

The LIM-domain-only (LMO) family of proteins function as linkers in the co-regulation of nuclear transcription by mediating protein-protein interactions. The four LMO members collectively play significant roles in cell fate determination, cell growth and differentiation, and organ development.

APPLICATION

To ensure optimal assay performance, AREX recommends conducting reagent titration tailored to each testing system for optimal detection results.

Application	IHC
Dilution Ratio	1:500-1:1000

*Results are sample-specific. Please refer to your local assay conditions and test parameters for reference.

PRODUCT OVERVIEW

Antibody Type	Primary antibodies
Isotype	IgG
Molecular Weight	Predicted band size: 18 kDa
Positive Control	K562 cell lysates, mouse brain tissue, human tonsil tissue, human lymph nodes tissue.
Localization	Nucleus.
Form / Buffer	PBS (pH7.4), 0.1% BSA, 40% Glycerol. Preservative: 0.05% Sodium Azide.
Purification	Protein A affinity purified.
Immunogen	Recombinant protein full length human LMO2.
UniProt	P25791(Human);P25801(Mouse);
Alternative Names	Cysteine rich protein TTG 2 antibody; Cysteine rich protein TTG2 antibody; Cysteine-rich protein TTG-2 antibody; LIM domain only 2 (rhombotin like 1) antibody; LIM domain only 2 antibody; LIM domain only protein 2 antibody; LMO 2 antibody; LMO-2 antibody; lmo2 antibody; RBTN 2 antibody; RBTN L1 antibody; RBTN2 antibody; RBTN2_HUMAN antibody; RBTN1 antibody; RBTN1 antibody; RHOM 2 antibody; RHOM2 antibody; Rhombotin 2 antibody; Rhombotin like 1 antibody; Rhombotin-2 antibody; Rhombotin2 antibody; T cell translocation gene 2 antibody; T cell translocation protein 2 antibody; T-cell translocation protein 2 antibody; TTG 2 antibody; TTG2 antibody

*AREX continuously optimizes our products. Webpage content may not reflect the latest updates. For inquiries, please contact info@arexbio.com or your local distributor.

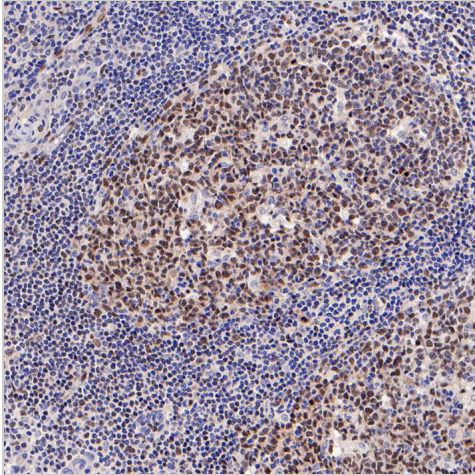
*Clone Number, Reactivity, Source/Host and Clonality can be found in the product name and Key Features section above.

DATASHEET

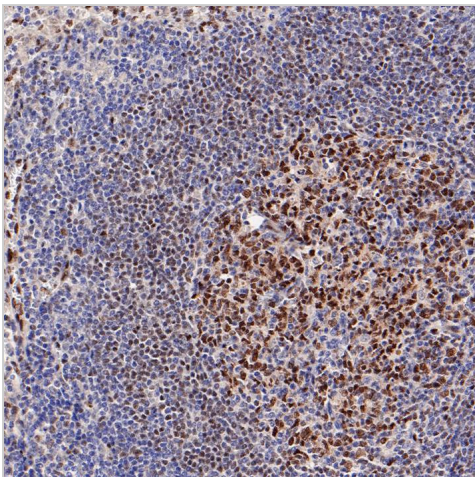
LOM2 Rabbit Monoclonal Antibody (ARA640)

CAT. NO. ARA6344

DATA



Immunohistochemical analysis of paraffin-embedded human tonsil tissue with LOM2 Rabbit Monoclonal Antibody(ARA640).



Immunohistochemical analysis of paraffin-embedded human lymph nodes tissue with LOM2 Rabbit Monoclonal Antibody(ARA640).

STORAGE

Shipped at 4°C. Store at -20°C for one year. Avoid repeated freeze/thaw cycles.

RESEARCH USE ONLY

For Research Use Only. Not for diagnostic, therapeutics, prophylactic or in vivo use.

More information: www.arexbio.com