

## DATASHEET

# SDHB Rabbit Monoclonal Antibody (ARA641)

CAT. NO. ARA6345

### KEY FEATURES

Target	SDHB	Clone ID	ARA641
Source / Host	Rabbit	Reactivity	Human
Applications	IHC	Dilution	1:500-1:1000
Clonality	Monoclonal	Storage	-20°C

### BACKGROUND

Iron-sulfur protein (IP) subunit of the succinate dehydrogenase complex (mitochondrial respiratory chain complex II), responsible for transferring electrons from succinate to ubiquinone (coenzyme Q).

### APPLICATION

To ensure optimal assay performance, AREX recommends conducting reagent titration tailored to each testing system for optimal detection results.

Application	IHC
Dilution Ratio	1:500-1:1000

\*Results are sample-specific. Please refer to your local assay conditions and test parameters for reference.

### PRODUCT OVERVIEW

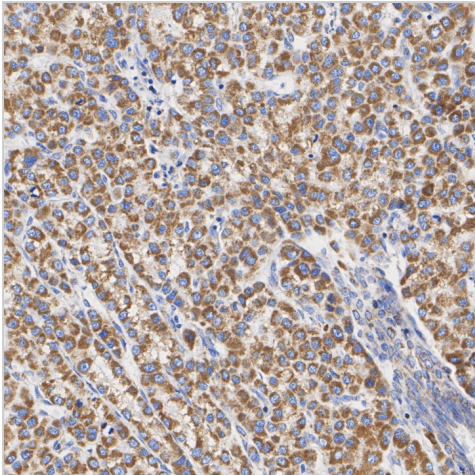
Antibody Type	Primary antibodies
Isotype	IgG
Molecular Weight	Predicted band size: 32 kDa
Positive Control	K-562 cell lysate, HEK-293 cell lysate, NIH/3T3 cell lysate, PC-12 cell lysate, Mouse liver tissue lysate, Rat liver tissue lysate, K-562, NIH/3T3, human liver cancer tissue, human kidney tissue, rat kidney tissue, mouse kidney tissue, PC-12.
Localization	Mitochondrion inner membrane.
Form / Buffer	1*TBBS (pH7.4), 0.05% BSA, 40% Glycerol. Preservative: 0.05% Sodium Azide.
Purification	Protein A affinity purified.
Immunogen	Synthetic peptide within human SDHB aa 1-280 / 280.
UniProt	P21912(Human);Q9CQA3(Mouse);P21913(Rat);
Alternative Names	CWS2 antibody; DHSB_HUMAN antibody; FLJ92337 antibody; Ip antibody; Iron sulfur subunit antibody; Iron sulfur subunit of complex II antibody; Iron-sulfur subunit of complex II antibody; mitochondrial antibody; PGL 4 antibody; PGL4 antibody; SDH 1 antibody; SDH antibody; SDH1 antibody; SDH2 antibody; SDH2, homolog of antibody; SdhB antibody; SDHIP antibody; Succinate dehydrogenase [ubiquinone] iron sulfur protein mitochondrial antibody; Succinate dehydrogenase [ubiquinone] iron sulfur subunit antibody; Succinate dehydrogenase [ubiquinone] iron-sulfur subunit antibody; succinate dehydrogenase [ubiquinone] iron-sulfur subunit, mitochondrial antibody; Succinate Dehydrogenase 1 Iron Sulfur Subunit antibody; Succinate Dehydrogenase 2, <i>S. cerevisiae</i> , homolog of antibody; Succinate dehydrogenase complex iron sulfur subunit B antibody; Succinate dehydrogenase complex subunit B iron sulfur antibody; Succinate Dehydrogenase Complex Subunit B Iron Sulfur Protein antibody; succinate dehydrogenase complex, subunit B, iron sulfur (Ip) antibody; Succinate dehydrogenase iron sulfur protein antibody

\*AREX continuously optimizes our products. Webpage content may not reflect the latest updates. For inquiries, please contact [info@arexbio.com](mailto:info@arexbio.com) or your local distributor.

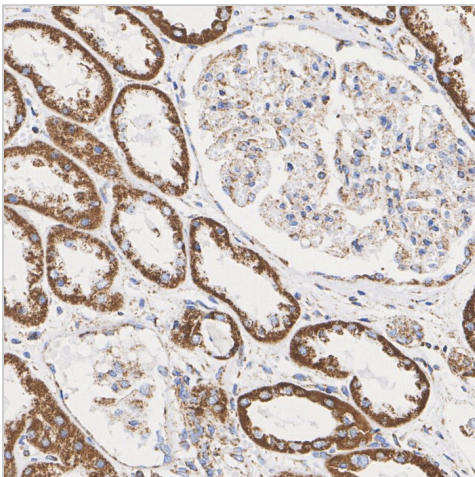
\*Clone Number, Reactivity, Source/Host and Clonality can be found in the product name and Key Features section above.

**DATASHEET****SDHB Rabbit Monoclonal Antibody (ARA641)**

CAT. NO. ARA6345

**DATA**

Immunohistochemical analysis of paraffin-embedded human liver cancer tissue with SDHB Rabbit Monoclonal Antibody (ARA641).



Immunohistochemical analysis of paraffin-embedded human kidney tissue with SDHB Rabbit Monoclonal Antibody (ARA641).

**STORAGE**

Shipped at 4°C. Store at -20°C for one year. Avoid repeated freeze/thaw cycles.

**RESEARCH USE ONLY**

For Research Use Only. Not for diagnostic, therapeutics, prophylactic or in vivo use.

More information: [www.arexbio.com](http://www.arexbio.com)