

## DATASHEET

# SALL4 Mouse Monoclonal Antibody (ARA642)

CAT. NO. ARA6346

### KEY FEATURES

Target	SALL4	Clone ID	ARA642
Source / Host	Mouse	Reactivity	Human
Applications	IHC	Dilution	1:500-1:1000
Clonality	Monoclonal	Storage	-20°C

### BACKGROUND

Sal-like protein 4 (SALL4) is a transcription factor encoded by a member of the Spalt-like (SALL) gene family.

### APPLICATION

To ensure optimal assay performance, AREX recommends conducting reagent titration tailored to each testing system for optimal detection results.

Application	IHC
Dilution Ratio	1:500-1:1000

\*Results are sample-specific. Please refer to your local assay conditions and test parameters for reference.

### PRODUCT OVERVIEW

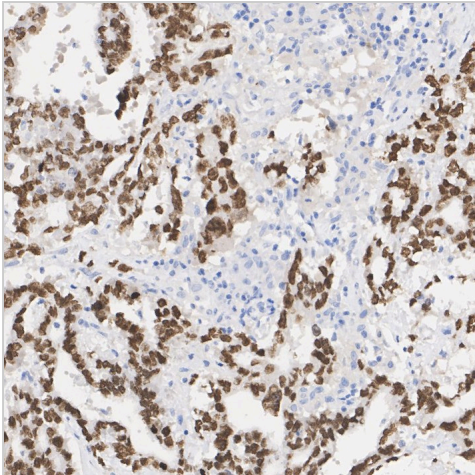
Antibody Type	Primary antibodies
Isotype	IgG1
Molecular Weight	Predicted band size: 112 kDa
Positive Control	NCCIT cell lysates, human seminoma tissue, human embryonal carcinoma tissue, human testis tissue, NCCIT.
Localization	Cytoplasm, Nucleus.
Form / Buffer	PBS (pH7.4), 0.1% BSA, 40% Glycerol. Preservative: 0.05% Sodium Azide.
Purification	Protein A affinity purified.
Immunogen	Recombinant protein within human SALL4 aa 904-1,053/1,053.
UniProt	Q9UJQ4(Human);
Alternative Names	AA407717 antibody; AL022809 antibody; AW536104 antibody; C330011P20Rik antibody; C78083 antibody; C78563 antibody; dj1112F19.1 antibody; DRRS antibody; HSAL4 antibody; Sal like 4 (Drosophila) antibody; Sal like 4 antibody; Sal like Protein 4 antibody; Sal-like protein 4 antibody; Sall4 antibody; SALL4_HUMAN antibody; Spalt like transcription factor 4 antibody; Tex20 antibody; Zinc finger protein 797 antibody; Zinc finger protein SALL4 antibody; ZNF797 antibody

\*AREX continuously optimizes our products. Webpage content may not reflect the latest updates. For inquiries, please contact [info@arexbio.com](mailto:info@arexbio.com) or your local distributor.

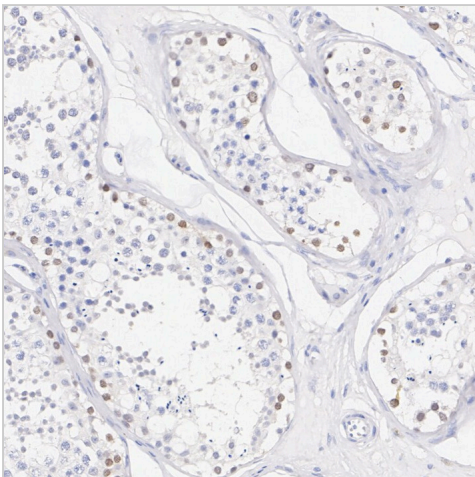
\*Clone Number, Reactivity, Source/Host and Clonality can be found in the product name and Key Features section above.

**DATASHEET****SALL4 Mouse Monoclonal Antibody (ARA642)**

CAT. NO. ARA6346

**DATA**

Immunohistochemical analysis of paraffin-embedded human embryonic carcinoma tissue with SALL4 Mouse Monoclonal Antibody (ARA642).



Immunohistochemical analysis of paraffin-embedded human testis tissue with SALL4 Mouse Monoclonal Antibody (ARA642).

**STORAGE**

Shipped at 4°C. Store at -20°C for one year. Avoid repeated freeze/thaw cycles.

**RESEARCH USE ONLY**

For Research Use Only. Not for diagnostic, therapeutics, prophylactic or in vivo use.

More information: [www.arexbio.com](http://www.arexbio.com)