

DATASHEET

LTBP-2 mouse monoclonal Antibody (E-10)

CAT. NO. ARA0002

KEY FEATURES

| | | | |
|--------------|-----------------------|---------------|------------|
| Target | LTBP-2 | Source / Host | Mouse |
| Reactivity | Human, Mouse, Rat | Clonality | Monoclonal |
| Applications | WB, IP, IF/ICC, ELISA | Storage | -20°C |

BACKGROUND

Transforming growth factor (TGF) β is secreted as part of an inactive complex that often includes latent TGF β -binding protein (LTBP). The LTBP family of proteins has a multidomain structure with cysteine-rich motifs. Specifically, LTBP-2 is an essential part of elastin-containing microfibrils. It contains 20 EGF-like repeats and 4 copies of an 8-cysteine repeat. Human foreskin fibroblasts synthesize LTBP-2 as a protein. During rodent development, LTBP-2 co-localizes with tropoelastin in various tissues such as the lung, dermis, epicardium, pericardium, and heart valves. In the young adult mouse, it also co-localizes with tropoelastin in the spleen. Pseudoexfoliation (PEX) syndrome is a systemic condition marked by the abnormal production and accumulation of a pathologic fibrillar extracellular material in numerous intra- and extraocular tissues. The fact that LTBP-1 and LTBP-2 co-localize with latent TGF β 1 and with fibrillin-1 on PEX fibrils implies a potential mechanism for regulating TGF β 1 activity in the eyes affected by PEX. Finally, the LTBP-2 gene is mapped to human chromosome 14q24.3.

APPLICATION

To ensure optimal assay performance, AREX recommends conducting reagent titration tailored to each testing system for optimal detection results.

| | |
|--------|---|
| WB | 1:100-1:1000 |
| IF/ICC | 1:50-1:500 |
| ELISA | 1:30-1:3000 |
| IP | 1-2 μ g/100-500 μ g total protein |

*Results are sample-specific. Please refer to your local assay conditions and test parameters for reference.

PRODUCT OVERVIEW

| | |
|------------------|---|
| Isotype | Mouse IgG2b kappa light chain |
| Target Antigen | LTBP-2 (Latent-transforming growth factor beta-binding protein 2) |
| Gene Name | LTBP2 |
| UniProt ID | Q14767 (Human), O88496 (Mouse), O35807 (Rat) |
| Entrez Gene ID | 4053 (Human), 16997 (Mouse), 83768 (Rat) |
| Molecular Weight | 210/175 kDa (under non-reducing conditions), 240 kDa (glycoprotein) |
| Gene Aliases | C14orf141, GLC3D, LTBP3, MSPKA, MSTP031, WMS3 |
| Immunogen | amino acids 211-480 mapping within an internal region of LTBP-2 of human origin |
| Form/Buffer | PBS with < 0.1% sodium azide and 0.1% gelatin |

*AREX continuously optimizes our products. Webpage content may not reflect the latest updates. For inquiries, please contact info@arexbio.com or your local distributor.

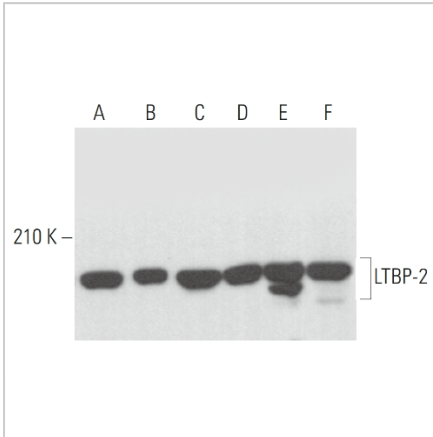
*Clone Number, Reactivity, Source/Host and Clonality can be found in the product name and Key Features section above.

DATASHEET

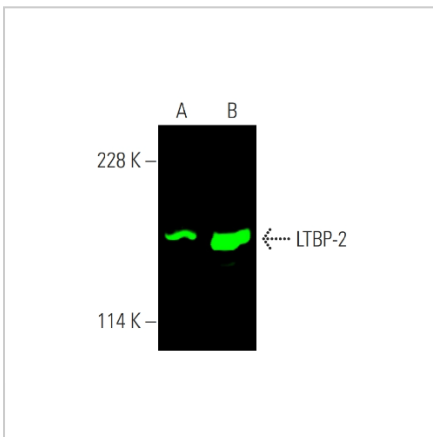
LTBP-2 mouse monoclonal Antibody (E-10)

CAT. NO. ARA0002

DATA



Western blot analysis of LTBP-2 expression in DU 145 (A), PC-3 (B), F9 (C), NIH/3T3 (D) and PC - 12 (E) whole cell lysates and rat testis tissue extract (F).



Near-infrared western blot analysis of LTBP-2 expression in PC-3 (A) and PC-12 (B) whole cell lysates.

STORAGE

Store at 4°C, DO NOT FREEZE. Stable for one year from the date of shipment.

NOTE

For Research Use Only. Not for diagnostic, therapeutics, prophylactic or in vivo use.

More information: www.arex.bio