

DATASHEET

Gephyrin Mouse Monoclonal Antibody (45)

CAT. NO. ARA0045

KEY FEATURES

Target	Gephyrin	Source / Host	Mouse
Reactivity	Human, Mouse, Rat, Drosophila	Clonality	Monoclonal
Applications	WB, IP, IF/ICC, IHC	Storage	-20°C

BACKGROUND

The sub - membraneous region at the postsynaptic membrane contains a number of proteins critical for receptor targeting. Gephyrin is a microtubule - associated protein highly expressed in brain and localized to neuronal postsynaptic membranes. Gephyrin is essential for the postsynaptic localization of the inhibitory Glycine receptor and is thought to anchor the receptor to subsynaptic microtubules. The protein is expressed in most mammalian tissues with predominant expression in brain. At least five additional splice variants of Gephyrin ranging in molecular weight have been identified in rat and human brain tissue.

APPLICATION

To ensure optimal assay performance, AREX recommends conducting reagent titration tailored to each testing system for optimal detection results.

WB	1:100-1:1000
IHC	1:50-1:500
IF/ICC	1:50-1:500
IP	1-2 µg/100-500 µg total protein

*Results are sample-specific. Please refer to your local assay conditions and test parameters for reference.

PRODUCT OVERVIEW

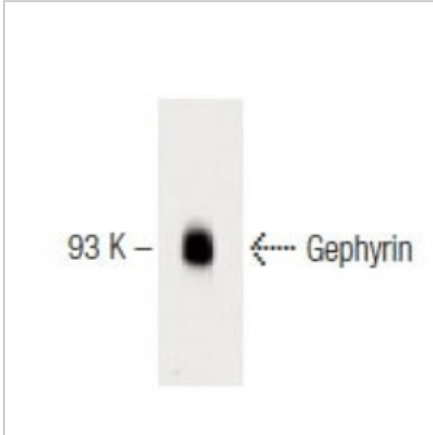
Isotype	Mouse IgG1 kappa light chain
Target Antigen	gephyrin
Gene Name	GPHN
UniProt ID	Q9NKR5 (Human), Q8CI90 (Mouse), Q03555 (Rat)
Entrez Gene ID	10243 (Human), 268733 (Mouse), 64008 (Rat)
Molecular Weight	93 kDa
Gene Aliases	GEPH, GPH, GPHN, MoCo synthesis-decorin, Molybdopterin adenylyltransferase
Immunogen	amino acids 515-728 mapping within an internal region of gephyrin of rat origin
Form/Buffer	PBS with < 0.1% sodium azide and 0.1% gelatin

*AREX continuously optimizes our products. Webpage content may not reflect the latest updates. For inquiries, please contact info@arexbio.com or your local distributor.

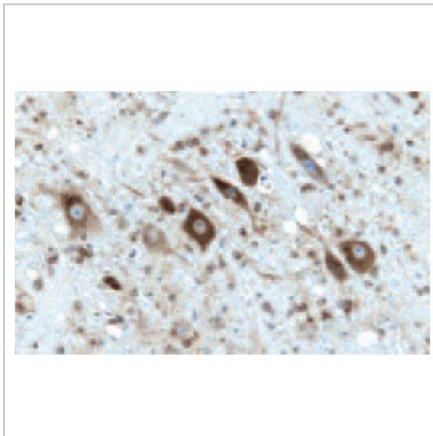
*Clone Number, Reactivity, Source/Host and Clonality can be found in the product name and Key Features section above.

DATASHEET**Gephyrin Mouse Monoclonal Antibody (45)**

CAT. NO. ARA0045

DATA

Western blot analysis of Gephyrin expression in rat brain tissue extract.



Immunoperoxidase staining of formalin - fixed, paraffin - embedded rat cerebellum tissue showing cytoplasmic staining.

STORAGE

Store at 4°C, DO NOT FREEZE. Stable for one year from the date of shipment.

NOTE

For Research Use Only. Not for diagnostic, therapeutics, prophylactic or in vivo use.

More information: www.arexbio.com