

DATASHEET

LRG1 Mouse Monoclonal Antibody (C-5)

CAT. NO. ARA0105

KEY FEATURES

Target	LRG1	Source / Host	Mouse
Reactivity	Mouse	Clonality	Monoclonal
Applications	WB, IP, IF/ICC,ELISA	Storage	-20°C

BACKGROUND

LRG1 (leucine - rich α - 2 - glycoprotein), also known as LRG, is a 347 amino acid secreted protein that contains eight LRR (leucine - rich) repeats and one LRRCT domain. The leucine - rich repeat (LRR) family of proteins, including LRG1, have been shown to be involved in protein - protein interaction, signal transduction, cell adhesion and development. Found mainly in plasma, LRG1 is expressed during granulocyte differentiation. The gene that encodes LRG1 consists of nearly 3,000 bases and maps to human chromosome 19p13.3. Chromosome 19 consists of over 63 million bases, houses approximately 1,400 genes and is recognized for having the greatest gene density of the human chromosomes. It is the genetic home for a number of immunoglobulin (Ig) superfamily members, including the killer cell and leukocyte Ig - like receptors, a number of ICAMs, the CEACAM and PSG families and Fc receptors (FcRs).

APPLICATION

To ensure optimal assay performance, AREX recommends conducting reagent titration tailored to each testing system for optimal detection results.

WB	1:100-1:1000
IF/ICC	1:50-1:500
ELISA	1:30-1:3000
IP	1-2 μ g/100-500 μ g total protein

*Results are sample-specific. Please refer to your local assay conditions and test parameters for reference.

PRODUCT OVERVIEW

Isotype	Mouse IgG2b kappa light chain
Target Antigen	LRG1 (Leucine-rich alpha-2-glycoprotein 1)
Gene Name	LRG1
UniProt ID	P02750 (Human), Q91XL1 (Mouse), Q5M875 (Rat)
Entrez Gene ID	116844 (Human), 76905 (Mouse), 497914 (Rat)
Molecular Weight	38-50 kDa (due to glycosylation)
Gene Aliases	LRG, LRG1, Leucine-rich alpha-2-glycoprotein, HMFT1766
Immunogen	amino acids 213-257 mapping within an internal region of LRG1 of mouse origin
Form/Buffer	PBS with < 0.1% sodium azide and 0.1% gelatin

*AREX continuously optimizes our products. Webpage content may not reflect the latest updates. For inquiries, please contact info@arexbio.com or your local distributor.

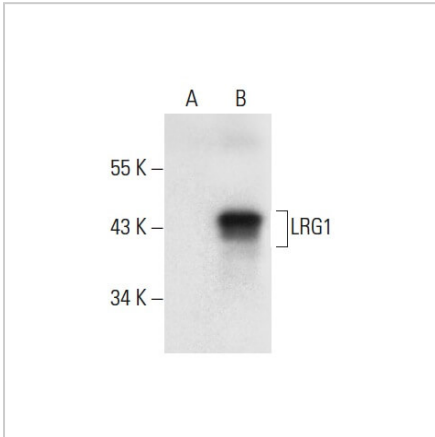
*Clone Number, Reactivity, Source/Host and Clonality can be found in the product name and Key Features section above.

DATASHEET

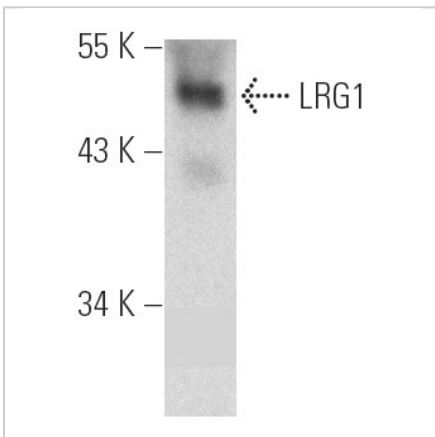
LRG1 Mouse Monoclonal Antibody (C-5)

CAT. NO. ARA0105

DATA



Western blot analysis of LRG1 expression in non - transfected [unclear text] (A) and mouse LRG1 transfected (B) 293T whole cell lysates.



Western blot analysis of LRG1 expression in mouse plasma tissue extract.

STORAGE

Store at 4°C, DO NOT FREEZE. Stable for one year from the date of shipment.

NOTE

For Research Use Only. Not for diagnostic, therapeutics, prophylactic or in vivo use.

More information: www.arexbio.com