

DATASHEET

PAI-2 Mouse Monoclonal Antibody (E-1)

CAT. NO. ARA0201

KEY FEATURES

Target	PAI-2	Source / Host	Mouse
Reactivity	Human, Mouse, Rat	Clonality	Monoclonal
Applications	WB, IP, IF/ICC, ELISA	Storage	-20°C

BACKGROUND

PAI-1 and PAI-2 (for plasminogen activator inhibitor-1 and -2) are members of the Serpin serine proteinase inhibitor family. PAI-1 and PAI-2 have been shown to regulate uPA (urokinase - type plasminogen activator) and tPA (tissue plasminogen activator), resulting in the inhibition of proteolytic activity. Members of the Serpin family generally complex with their target proteinases, then disassociate slowly into cleaved species that fold into stable inactive forms. PAI-1 can fold into the inactive state without cleavage, resulting in the latent form of PAI-1. Activity can be restored to the latent form of PAI-1 through denaturation and renaturation. PAI-2 occurs in secreted and cytosolic forms through facultative polypeptide translocation. uPa is a serine proteinase that is a member of the Trypsin family. It is responsible for the cleavage of plasminogen at the Arg - Val bond to produce plasmin. uPA consists of two chains, designated A and B. The A chain can be cleaved, resulting in low and high molecular mass forms of uPA.

APPLICATION

To ensure optimal assay performance, AREX recommends conducting reagent titration tailored to each testing system for optimal detection results.

WB	1:100-1:1000
IF/ICC	1:50-1:500
ELISA	1:30-1:3000
IP	1-2 µg/100-500 µg total protein

*Results are sample-specific. Please refer to your local assay conditions and test parameters for reference.

PRODUCT OVERVIEW

Isotype	Mouse IgG1 kappa light chain
Target Antigen	PAI-2 (Plasminogen activator inhibitor 2)
Gene Name	SERPINB2
UniProt ID	P05120 (Human), P12388 (Mouse)
Entrez Gene ID	5055 (Human), 18788 (Mouse)
Molecular Weight	47 kDa (cytoplasmic form), 60 kDa (glycosylated extracellular form)
Gene Aliases	PAI2, PLANH2, Serpin B2, Monocyte-derived plasminogen activator inhibitor
Immunogen	amino acids 116-245 mapping within an internal region of PAI-2 of human origin
Form/Buffer	PBS with < 0.1% sodium azide and 0.1% gelatin

*AREX continuously optimizes our products. Webpage content may not reflect the latest updates. For inquiries, please contact info@arex.bio or your local distributor.

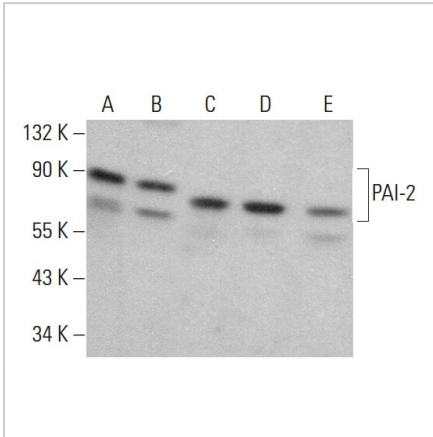
*Clone Number, Reactivity, Source/Host and Clonality can be found in the product name and Key Features section above.

DATASHEET

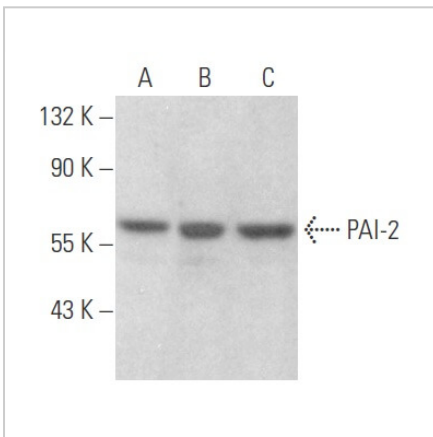
PAI-2 Mouse Monoclonal Antibody (E-1)

CAT. NO. ARA0201

DATA



Western blot analysis of PAI-2 expression in K-562 (A), WI-38 (B), C2C12 (C), WEHI-231 (D) and A-10 (E) whole cell lysates.



Western blot analysis of PAI-2 expression in K-562 (A), JAR (B) and A-431 (C) whole cell lysates.

STORAGE

Store at 4°C, DO NOT FREEZE. Stable for one year from the date of shipment.

NOTE

For Research Use Only. Not for diagnostic, therapeutics, prophylactic or in vivo use.

More information: www.arexbio.com