

**DATASHEET**

**H+/K+ ATPase  $\beta$  Mouse Monoclonal Antibody(ARA827)**

**CAT. NO. ARA6328**

**KEY FEATURES**

Target	H+/K+ ATPase beta	Source / Host	Mouse
Reactivity	Human, Mouse, Rat	Clonality	Monoclonal
Applications	IHC	Storage	-20°C

**BACKGROUND**

The gastric H+/K+ ATPase exists as a heterodimer consisting of an alpha and a beta subunit that work in tandem to transport protons across plasma membranes. H+/K+ ATPase beta, also known as ATP4B or ATP6B, is a 291 amino acid single-pass type II membrane protein that functions as the beta subunit of the H+/K+ ATPase heterodimer. Working with the alpha subunit, H+/K+ ATPase beta effectively catalyzes the hydrolysis of ATP coupled with the exchange of H+ and K+ ions across the plasma membrane and plays an essential role in gastric acid secretion. The gene encoding H+/K+ ATPase beta maps to human chromosome 13, which houses over 400 genes, such as BRCA2 and RB1, and comprises nearly 4% of the human genome. Trisomy 13, also known as Patau syndrome, is deadly and the few who survive past one year suffer from permanent neurologic defects, difficulty eating and vulnerability to serious respiratory infections.

**APPLICATION**

To ensure optimal assay performance, AREX recommends conducting reagent titration tailored to each testing system for optimal detection results.

Application	Dilution Ratio
IHC	1:50 - 1:500

\*Results are sample-specific. Please refer to your local assay conditions and test parameters for reference.

**OVERVIEW**

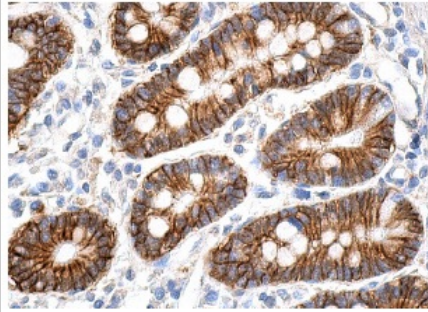
Isotype	IgG1 kappa light chain
Research Area	Metabolism, Channels & Transporters, Circulatory System, Hydrogen Potassium ATPase
Target Antigen	H+/K+ ATPase beta
Molecular Weight	35-50 kDa (unglycosylated), 60-80 kDa (glycosylated)
Gene Aliases	ATP4B, Gastric Hydrogen Potassium ATPase Beta Subunit
Immunogen	amino acids 1-291 representing full length H+/K+ ATPase beta of human origin
Form/Buffer	PBS with < 0.1% sodium azide and 0.1% gelatin

\*AREX continuously optimizes our products. Webpage content may not reflect the latest updates. For inquiries, please contact info@arexbio.com or your local distributor.

\*Clone Number, Reactivity, Source/Host and Clonality can be found in the product name and Key Features section above.

**DATASHEET****H<sup>+</sup>/K<sup>+</sup> ATPase  $\beta$  Mouse Monoclonal Antibody(ARA827)**

CAT. NO. ARA6328

**DATA**

Immunoperoxidase staining of formalin fixed, paraffin-embedded human duodenum tissue showing membrane staining of glandular cells.

**STORAGE**

Store at 4°C, DO NOT FREEZE. Stable for one year from the date of shipment.

**NOTE**

For Research Use Only. Not for diagnostic, therapeutics, prophylactic or in vivo use.

More information: [www.arexbio.com](http://www.arexbio.com)