

## DATASHEET

# hCG alpha Mouse Monoclonal Antibody(C2216)

CAT. NO. ARA6330

### KEY FEATURES

Target	hCG alpha	Source / Host	Mouse
Reactivity	Human	Clonality	Monoclonal
Applications	IHC	Conjugation	Unconjugated
Form / Buffer	Mouse IgG. Liquid in PBS containing 50% glycerol, 0.2% BSA and 0.01% sodium azide.	Storage	at-20°C

### BACKGROUND

Shared alpha chain of the active heterodimeric glycoprotein hormones thyrotropin/thyroid stimulating hormone/TSH, lutropin/luteinizing hormone/LH, follitropin/follicle stimulating hormone/FSH and choriogonadotropin/CG. These hormones bind specific receptors on target cells that in turn activate downstream signaling pathways.

### APPLICATION

To ensure optimal assay performance, AREX recommends conducting reagent titration tailored to each testing system for optimal detection results.

IHC	1:100 - 1:300
-----	---------------

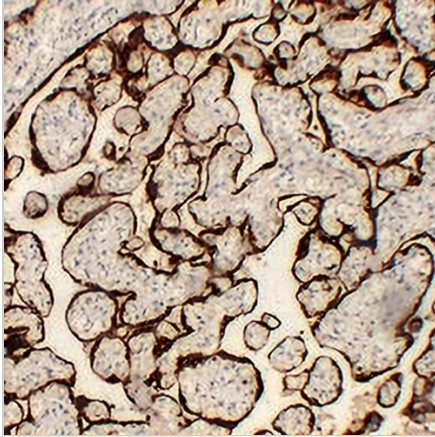
\*Results are sample-specific. Please refer to your local assay conditions and test parameters for reference.

### PRODUCT OVERVIEW

Description	Mouse monoclonal antibody to hCG alpha
Specificity	Recognizes endogenous levels of hCG alpha protein.
Antibody Type	Primary antibody
Immunogen	KLH-conjugated synthetic peptide encompassing a sequence within human hCG alpha. The exact sequence is proprietary.
Purification	The antibody was purified by immunogen affinity chromatography.
Form/Buffer	Mouse IgG. Liquid in PBS containing 50% glycerol, 0.2% BSA and 0.01% sodium azide.
Alternative Names	Glycoprotein hormones alpha chain; Anterior pituitary glycoprotein hormones common subunit alpha; Choriogonadotropin alpha chain; Chorionic gonadotrophin subunit alpha; CG-alpha; Follicle-stimulating hormone alpha chain; FSH-alpha; Follitropin alpha chain; Luteinizing hormone alpha chain; LSH-alpha; Lutropin alpha chain; Thyroid-stimulating hormone alpha chain; TSH-alpha; Thyrotropin alpha chain
Gene Symbol	CGA
Entrez Gene	1081(Human)
SwissProt	P01215(Human)

\*AREX continuously optimizes our products. Webpage content may not reflect the latest updates. For inquiries, please contact [info@arexbio.com](mailto:info@arexbio.com) or your local distributor.

\*Clone Number, Reactivity, Source/Host and Clonality can be found in the product name and Key Features section above.

**DATASHEET****hCG alpha Mouse Monoclonal Antibody(C2216)****CAT. NO. ARA6330****DATA**

Immunohistochemical analysis of hCG alpha staining in human placenta formalin fixed paraffin embedded tissue section. The section was pre-treated using heat mediated antigen retrieval with sodium citrate buffer (pH 6.0). The section was then incubated with the antibody at room temperature and detected using an HRP conjugated compact polymer system. DAB was used as the chromogen. The section was then counterstained with haematoxylin and mounted with DPX.

**STORAGE**

Store at 4°C short term. For long term storage, store at -20°C, avoiding freeze/thaw cycles.

**NOTE**

For Research Use Only. Not for diagnostic, therapeutics, prophylactic or in vivo use.