

DATASHEET

CMV Mouse Monoclonal Antibody(8B1.2, 1G5.2 & 2D4.2)

CAT. NO. ARA6360

KEY FEATURES

Target	CMV	Source / Host	Mouse
Reactivity	Human	Clonality	Monoclonal
Applications	IHC	Storage	-20°C

BACKGROUND

Cytomegalovirus (CMV) is a virus of the Herpes-virus group; in humans it is commonly known as HCMV or Human Herpesvirus 5 (HHV-5). CMV belongs to the Betaherpesvirinae subfamily of Herpesviridae, which also includes Roseolovirus.

APPLICATION

To ensure optimal assay performance, AREX recommends conducting reagent titration tailored to each testing system for optimal detection results.

IHC	1:25 - 1:100
-----	--------------

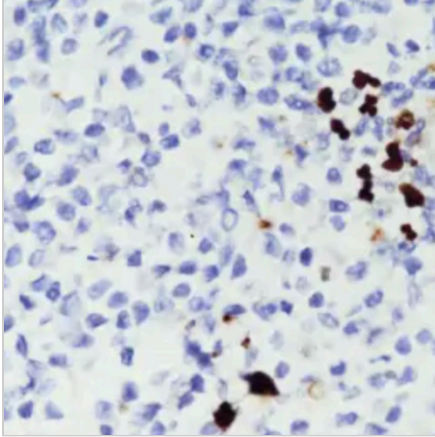
*Results are sample-specific. Please refer to your local assay conditions and test parameters for reference.

PRODUCT OVERVIEW

Product Type	Primary Antibody
Antibody Type	Mouse Monoclonal
Isotype	IgG2a
Localization	Nuclear
Alternative Names	Cytomegalovirus ;CMV
Reactivity Tissue	CMV Infected Tissue
Form	Solution in Tris Buffer, pH 7.3-7.7, with 1% BSA and <0.1% Sodium Azide

*AREX continuously optimizes our products. Webpage content may not reflect the latest updates. For inquiries, please contact info@arexbio.com or your local distributor.

*Clone Number, Reactivity, Source/Host and Clonality can be found in the product name and Key Features section above.

DATASHEET**CMV Mouse Monoclonal Antibody(8B1.2, 1G5.2 & 2D4.2)****CAT. NO. ARA6360****DATA**

Immunohistochemical staining of CMV infected tissue sections using CMV Mouse Monoclonal Antibody (8B1.2, 1G5.2 & 2D4.2).

STORAGE

Shipped at 4°C. Store at -20°C for one year. Avoid repeated freeze/thaw cycles.

NOTE

For Research Use Only. Not for diagnostic, therapeutics, prophylactic or in vivo use.

More information: www.arexbio.com