

DATASHEET

RAB11B-Specific Rabbit Polyclonal Antibody

CAT. NO. ARA6367

KEY FEATURES

Target	RAB11B-Specific	Source / Host	Rabbit
Reactivity	Human, Mouse, Rat	Clonality	Polyclonal
Applications	WB, IHC, IP, ELISA	Storage	-20°C

BACKGROUND

RAB11B, also named as YPT3, belongs to the small GTPase superfamily and Rab family. RAB11B possesses GTPase activity. The antibody is specific to RAN11B. The antibody has no cross reaction to RAB11A.

APPLICATION

To ensure optimal assay performance, AREX recommends conducting reagent titration tailored to each testing system for optimal detection results.

WB	1:200-1:1000
IHC	1:20-1:200
IP	0.5-4.0 ug for 1.0-3.0 mg of total protein lysate

*Results are sample-specific. Please refer to your local assay conditions and test parameters for reference.

PRODUCT OVERVIEW

Recommended Method	WB, IP, IHC, ELISA
Reactivity Species	Human, Mouse, Rat, Canine
Immunogen	Peptide
Host Species / Isotype	Rabbit / IgG
Clonality	Polyclonal
Product Type	Antibody
Alternative Names	GTP binding protein YPT3, H YPT3, RAB11B, RAB11B-Specific, Ras related protein Rab 11B, YPT3
Molecular Weight	24 kDa
Gene Symbol	RAB11B
Gene ID (Human)	9230
Conjugate	Unconjugated
Form	Liquid

*AREX continuously optimizes our products. Webpage content may not reflect the latest updates. For inquiries, please contact info@arexbio.com or your local distributor.

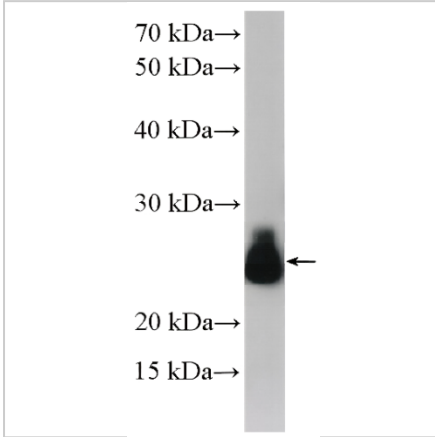
*Clone Number, Reactivity, Source/Host and Clonality can be found in the product name and Key Features section above.

DATASHEET

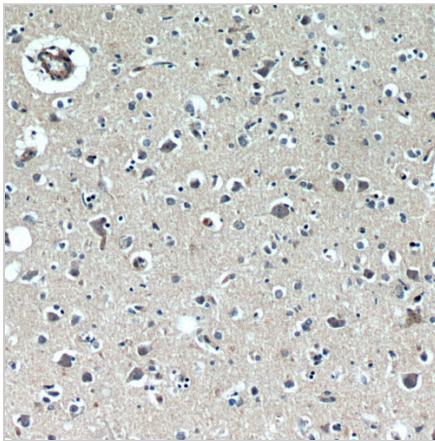
RAB11B-Specific Rabbit Polyclonal Antibody

CAT. NO. ARA6367

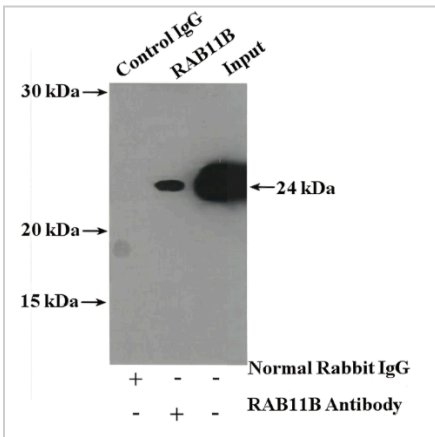
DATA



PC-12 cells were subjected to SDS PAGE followed by western blot with RAB11B-Specific Rabbit Polyclonal Antibody at dilution of 1:300 incubated at room temperature for 1.5 hours.



Immunohistochemical analysis of paraffin-embedded human brain using RAB11B-Specific Rabbit Polyclonal Antibody at dilution of 1:50 .



IP result of RAB11B-Specific Rabbit Polyclonal Antibody (IP:RAB11B-Specific Rabbit Polyclonal Antibody, 4ug; Detection:RAB11B-Specific Rabbit Polyclonal Antibody 1:1000) with mouse brain tissue lysate 3200 ug.

STORAGE

Shipped at 4°C. Store at -20°C for one year. Avoid repeated freeze/thaw cycles.

NOTE

For Research Use Only. Not for diagnostic, therapeutics, prophylactic or in vivo use.

More information: www.arexbio.com