

**DATASHEET**

**RAB11A Rabbit Polyclonal Antibody**

**CAT. NO. ARA6368**

**KEY FEATURES**

Target	RAB11A	Source / Host	Rabbit
Reactivity	Human, Mouse, Rat	Clonality	Polyclonal
Applications	WB, IHC, IF/ICC, IP, ELISA	Storage	-20°C

**BACKGROUND**

Rab11a, Rab11b and Rab25 comprise a subfamily of Rab proteins that belong to the Ras-related small GTPase protein superfamily (PMID: 8074219, PMID: 10708602). Rab11 proteins are involved in endocytosis and plasma membrane recycling in non-polarized and polarized cells (PMID: 8638719, PMID: 8922376). Rab11a and Rab11b are ubiquitously expressed in most tissues, while Rab25 is only expressed in epithelial cells. Rab11a is known to regulate the recycling of internalized cell surface proteins and receptors from the early endosome through the trans-Golgi network (PMID: 11121436, PMID: 9600939). The antibody is specific to RAB11A, and has no cross reaction to RAB11B.

**APPLICATION**

To ensure optimal assay performance, AREX recommends conducting reagent titration tailored to each testing system for optimal detection results.

WB	1:500-1:1000
IHC	1:50-1:200
IP	1:200-1:800
IF/ICC	0.5-4.0 ug for 1.0-3.0 mg of total protein lysate

\*Results are sample-specific. Please refer to your local assay conditions and test parameters for reference.

**PRODUCT OVERVIEW**

Recommended Method	WB, IHC, IF/ICC, IP, ELISA
Reactivity Species	Human, Mouse, Rat
Immunogen	Peptide
Host Species / Isotype	Rabbit / IgG
Clonality	Polyclonal
Product Type	Antibody
Alternative Names	RAB11A-Specific, Rab 11, RAB11, RAB11A/B, EC:3.6.5.2
Calculated Molecular Weight	24 kDa
Observed Molecular Weight	24 kDa
Gene Symbol	RAB11A
Gene ID (Human)	8766
Conjugate	Unconjugated

\*AREX continuously optimizes our products. Webpage content may not reflect the latest updates. For inquiries, please contact [info@arexbio.com](mailto:info@arexbio.com) or your local distributor.

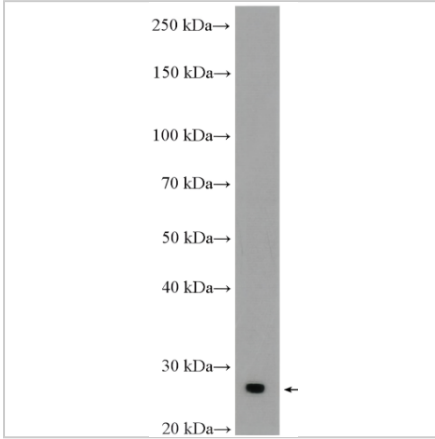
\*Clone Number, Reactivity, Source/Host and Clonality can be found in the product name and Key Features section above.

**DATASHEET**

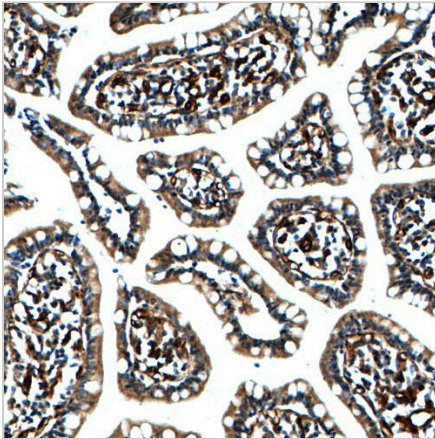
**RAB11A Rabbit Polyclonal Antibody**

**CAT. NO. ARA6368**

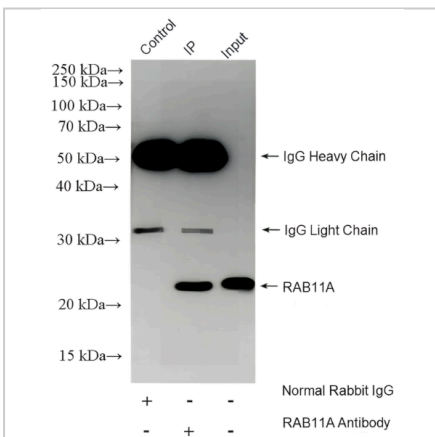
**DATA**



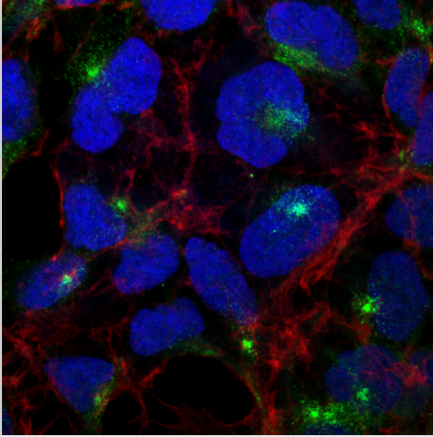
Rat brain tissue were subjected to SDS PAGE followed by western blot with RAB11A Rabbit Polyclonal Antibody at dilution of 1:600 incubated at room temperature for 1.5 hours.



Immunohistochemical analysis of paraffin-embedded human small intestine tissue slide using RAB11A Rabbit Polyclonal Antibody at dilution of 1:200.



IP result of RAB11A Rabbit Polyclonal Antibody, 4ug; Detection:RAB11A Rabbit Polyclonal Antibody 1:1000) with SH-SY5Y cells lysate 1840 ug.

**DATASHEET****RAB11A Rabbit Polyclonal Antibody****CAT. NO. ARA6368****DATA (CONTINUED)**

Immunofluorescent analysis of (4% PFA) fixed HEK-293 cells using RAB11A Rabbit Polyclonal Antibody at dilution of 1:400 and AREX®Flour 488-Conjugated Rabbit IgG(H+L) Goat Antibody, AREX®Flour 594-Phalloidin (red).

**STORAGE**

Shipped at 4°C. Store at -20°C for one year. Avoid repeated freeze/thaw cycles.

**NOTE**

For Research Use Only. Not for diagnostic, therapeutics, prophylactic or in vivo use.