

DATASHEET

IGF2 Rabbit Monoclonal Antibody(ARA655)

CAT. NO. ARA6373

KEY FEATURES

Target	IGF2	Source / Host	Rabbit
Reactivity	Human	Clonality	Monoclonal
Applications	IHC	Storage	-20°C

BACKGROUND

IGF-II (Insulin-like growth factor II; also multiplication-stimulating polypeptide/MSP and somatomedin-A) is a secreted 8 kDa polypeptide that belongs to the insulin family of peptide growth factors. It is part of a complex system of growth and metabolic-regulating proteins that is particularly important during development. It has been associated with nervous system proliferation and differentiation, myelination, adrenal cortical proliferation, and skeletal growth and differentiation. In human, IGF-II is primarily synthesized by the liver, and circulates at high levels in both fetus and adult. In rodent, however, IGF-II levels drop after the perinatal period, an effect attributed to the lack of a key gene promoter. This may indicate that postnatally, IGF-II has either a limited, or local effect only in rodent.

APPLICATION

To ensure optimal assay performance, AREX recommends conducting reagent titration tailored to each testing system for optimal detection results.

IHC	1:50 - 1:200
-----	--------------

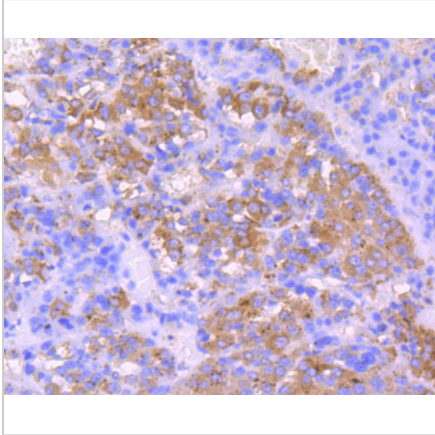
*Results are sample-specific. Please refer to your local assay conditions and test parameters for reference.

PRODUCT OVERVIEW

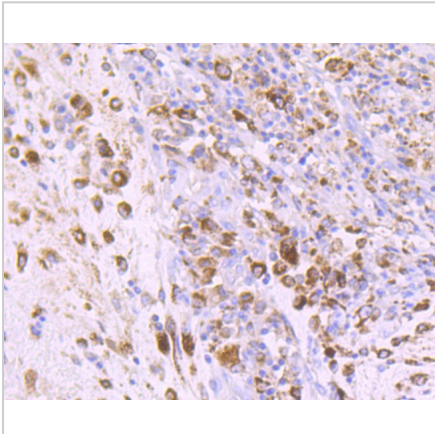
Antibody Type	Recombinant Rabbit monoclonal Antibody
Immunogen	Recombinant protein within Human IGF2 aa 25-121 / 180.
Predicted Molecular Weight	20 kDa
Positive Control	Human placenta tissue lysates, Hela, HepG2, 293T, 293, human liver carcinoma tissue, human colon carcinoma tissue, human breast carcinoma tissue.
Conjugate	Unconjugated
Form/Buffer	1*TBS (pH7.4), 0.05% BSA, 40% Glycerol. Preservative: 0.05% Sodium Azide.
Uniprot ID	P01344
Alternative Names	C11orf43, IGF 2, IGF II, IGF-II, IGF2, IGF2_HUMAN, IGFII, INSIGF, insulin like growth factor 2 (somatomedin A), Insulin like Growth Factor 2, Insulin like growth factor II, Insulin like growth factor II precursor, Insulin like growth factor type 2, pp9974, Preptin, putative insulin like growth factor II associated protein, Somatomedin A, Somatomedin-A

*AREX continuously optimizes our products. Webpage content may not reflect the latest updates. For inquiries, please contact info@arexbio.com or your local distributor.

*Clone Number, Reactivity, Source/Host and Clonality can be found in the product name and Key Features section above.

DATASHEET**IGF2 Rabbit Monoclonal Antibody(ARA655)****CAT. NO. ARA6373****DATA**

Immunohistochemical analysis of paraffin-embedded human liver carcinoma tissue using IGF2 Rabbit Monoclonal Antibody(ARA655).



Immunohistochemical analysis of paraffin-embedded human colon carcinoma tissue using IGF2 Rabbit Monoclonal Antibody(ARA655).

STORAGE

Shipped at 4°C. Store at -20°C for one year. Avoid repeated freeze/thaw cycles.

NOTE

For Research Use Only. Not for diagnostic, therapeutics, prophylactic or in vivo use.

More information: www.arexbio.com