

**DATASHEET**

**CGRP Rabbit Monoclonal Antibody(ARA667)**

**CAT. NO. ARA6385**

**KEY FEATURES**

Target	CGRP	Source / Host	Rabbit
Reactivity	Human, Mouse, Rat	Clonality	Monoclonal
Applications	WB, IHC, IF/ICC, FC	Storage	-20°C

**BACKGROUND**

Calcitonin gene-related peptide (CGRP) is a member of the calcitonin family of peptides consisting of calcitonin, amylin, adrenomedullin, adrenomedullin 2 (intermedin) and calcitonin-receptor-stimulating peptide. CGRP is produced in both peripheral and central neurons. It is a potent peptide vasodilator and can function in the transmission of nociception. In the spinal cord, the function and expression of CGRP may differ depending on the location of synthesis. CGRP is derived mainly from the cell bodies of motor neurons when synthesized in the ventral horn of the spinal cord and may contribute to the regeneration of nervous tissue after injury. Conversely, CGRP is derived from dorsal root ganglion when synthesized in the dorsal horn of the spinal cord and may be linked to the transmission of pain. In the trigeminal vascular system, the cell bodies of the trigeminal ganglion are the main source of CGRP. CGRP is thought to play a role in cardiovascular homeostasis and nociception. In the heart, CGRP acts as a chronotrope by increasing heart rate. Apart from these attributes, CGRP is known to modulate the autonomic nervous system and plays a role in ingestion. CGRP has moderate effects on calcium homeostasis compared to its extensive actions in other areas, such as the autonomic nervous system.

**APPLICATION**

To ensure optimal assay performance, AREX recommends conducting reagent titration tailored to each testing system for optimal detection results.

WB	1:1000-1:2000
IHC	1:200-1:2000
IF/ICC	1:100-1:200
FC	1:1000-1:10000

\*Results are sample-specific. Please refer to your local assay conditions and test parameters for reference.

**PRODUCT OVERVIEW**

Product Description	Recombinant Rabbit monoclonal Antibody to CGRP
Immunogen	Recombinant protein within rat CGRP aa 1-128.
Clonality	Monoclonal
Purification	Protein A affinity purified.
Isotype	IgG
Conjugate	unconjugated
Form	Liquid
Form/Buffer	PBS (pH7.4), 0.1% BSA, 40% Glycerol. Preservative: 0.05% Sodium Azide.
Reactivity Species	Human, Mouse, Rat
Molecular Weight	Predicted band size: 14 kDa
Positive Control	TT cell lysate, human brain tissue, mouse spinal cord tissue, rat spinal cord tissue, mouse colon tissue, rat colon tissue, TT.

\*AREX continuously optimizes our products. Webpage content may not reflect the latest updates. For inquiries, please contact [info@arexbio.com](mailto:info@arexbio.com) or your local distributor.

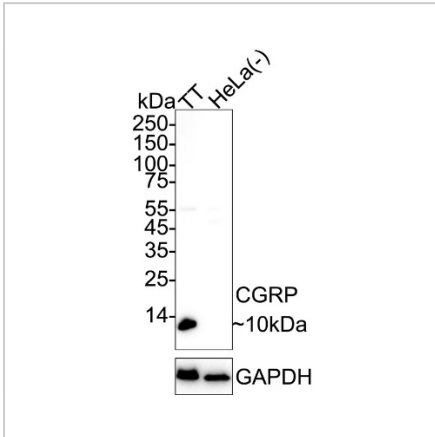
\*Clone Number, Reactivity, Source/Host and Clonality can be found in the product name and Key Features section above.

**DATASHEET**

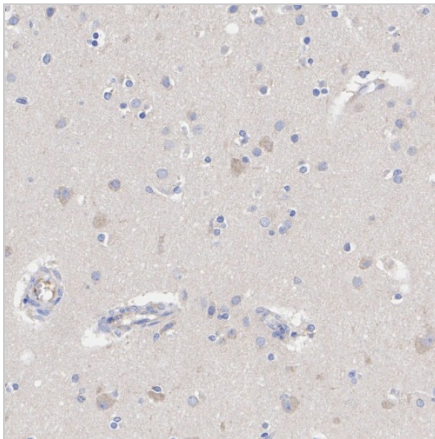
**CGRP Rabbit Monoclonal Antibody(ARA667)**

**CAT. NO. ARA6385**

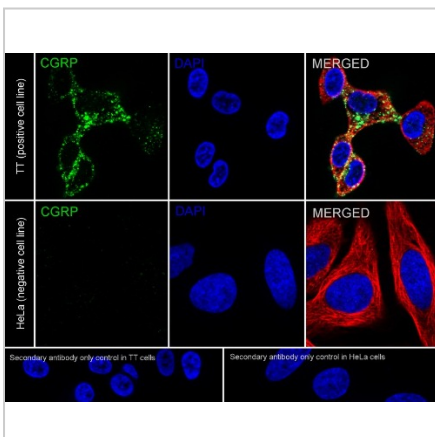
**DATA**



Western blot analysis of CGRP on different lysates with CGRP Rabbit Monoclonal Antibody(ARA667) at 1/2,000 dilution.



Immunohistochemical analysis of paraffin-embedded human brain tissue with CGRP Rabbit Monoclonal Antibody(ARA667) at 1/200 dilution.



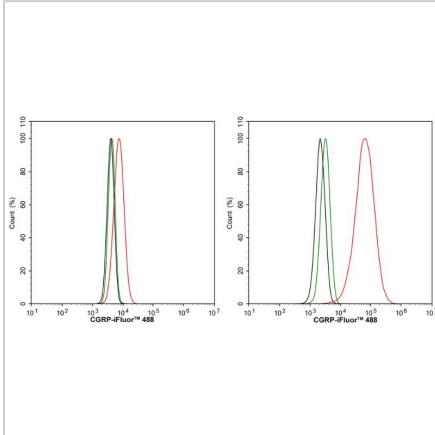
Immunocytochemistry analysis of TT (positive) and HeLa (negative) labeling CGRP with CGRP Rabbit Monoclonal Antibody(ARA667) at 1/100 dilution.

**DATASHEET**

**CGRP Rabbit Monoclonal Antibody(ARA667)**

**CAT. NO. ARA6385**

**DATA (CONTINUED)**



Flow cytometric analysis of HeLa (left, negative) and TT (right, positive) cells labeling CGRP.

**STORAGE**

Shipped at 4°C. Store at -20°C for one year. Avoid repeated freeze/thaw cycles.

**NOTE**

For Research Use Only. Not for diagnostic, therapeutics, prophylactic or in vivo use.