

DATASHEET

Salmonella typhimurium LPS Mouse Monoclonal Antibody(ARA669)

CAT. NO. ARA6387

KEY FEATURES

Target	Salmonella typhimurium LPS	Source / Host	Mouse
Reactivity	Salmonella typhimurium	Clonality	Monoclonal
Applications	WB, ELISA, Flow Cyt, Dot, IF/ICC, EM Storage		-20°C

BACKGROUND

Salmonella typhimurium LPS also known as lipopolysaccharide forms a vital component of the outer membrane of Gram-negative bacteria such as Salmonella. This complex molecule consists of a lipid A domain a core oligosaccharide and an O-antigen polysaccharide chain. The lipid A component with an estimated mass of roughly 10 kDa is the main contributor to LPS endotoxin activity. In Salmonella the LPS is expressed in the bacterial cell wall providing structural integrity and defense against environmental stresses. Its composition varies among different Salmonella strains influencing the bacterium's virulence and interaction with host immune systems.

APPLICATION

To ensure optimal assay performance, AREX recommends conducting reagent titration tailored to each testing system for optimal detection results.

WB, ELISA, Flow Cyt, Dot, IF/ICC, EM	Use at an assay dependent concentration.
---	--

*Results are sample-specific. Please refer to your local assay conditions and test parameters for reference.

PRODUCT OVERVIEW

Isotype	IgG1
Host Species	Mouse
Form/Buffer	pH: 7.4 Preservative: 0.1% Sodium azide
Form	Liquid
Clonality	Monoclonal
Purification	Affinity purification Protein A
Specificity	This antibody is directed against lipopolisaccharides of Salmonella typhimurium
Light Chain Type	unknown

*AREX continuously optimizes our products. Webpage content may not reflect the latest updates. For inquiries, please contact info@arexbio.com or your local distributor.

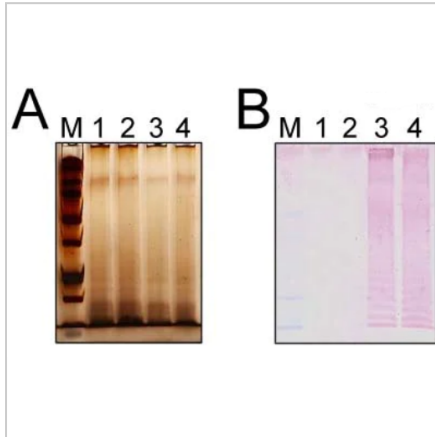
*Clone Number, Reactivity, Source/Host and Clonality can be found in the product name and Key Features section above.

DATASHEET

Salmonella typhimurium LPS Mouse Monoclonal Antibody(ARA669)

CAT. NO. ARA6387

DATA



Gels were (A) silver-stained or (B) Western blotted using the Salmonella typhimurium LPS Mouse Monoclonal Antibody(ARA669) as the primary antibody. Although equal amounts of cellular material were detected by silver staining, only the S. Typhimurium samples were recognized by the Salmonella typhimurium LPS Mouse Monoclonal Antibody(ARA669) on the corresponding Western blot. All lanes: Western blot - Salmonella typhimurium LPS Mouse Monoclonal Antibody(ARA669) at 1/1000 dilution
 Lane 1: Whole cell polysaccharides from S. Enteritidis 27655-3b at 100000000 Cells
 Lane 2: Whole cell polysaccharides from S. Enteritidis Sal8 at 100000000 Cells
 Lane 3: Whole cell polysaccharides from S. Typhimurium ATCC 14028s at 100000000 Cells
 Lane 4: Whole cell polysaccharides from S. Typhimurium SL1344 at 100000000 Cells
 Secondary All lanes: AP conjugated goat anti-mouse polyclonal at 1/4000 dilution

STORAGE

Shipped at 4°C. Store at -20°C for one year. Avoid repeated freeze/thaw cycles.

NOTE

For Research Use Only. Not for diagnostic, therapeutics, prophylactic or in vivo use.

More information: www.arexbio.com