

DATASHEET

POLE Rabbit Polyclonal Antibody

CAT. NO. ARA6393

KEY FEATURES

Target	POLE	Source / Host	Rabbit
Reactivity	Human	Clonality	Polyclonal
Applications	IHC	Storage	-20°C

BACKGROUND

POLE (Polepsi) is present in proliferating cells and is implicated in repair of UV-damaged DNA.

APPLICATION

To ensure optimal assay performance, AREX recommends conducting reagent titration tailored to each testing system for optimal detection results.

IHC	1:100 - 1:500
-----	---------------

*Results are sample-specific. Please refer to your local assay conditions and test parameters for reference.

PRODUCT OVERVIEW

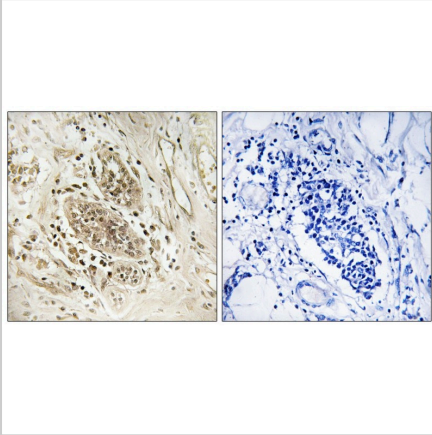
Product Description	Rabbit Polyclonal Antibody to POLE1
Immunogen	The antiserum was produced against synthesized peptide derived from human POLE1. AA range:1261-1310
Purification	Immunogen affinity purified.
Clonality	Polyclonal
Form	Liquid
Form/Buffer	Liquid in PBS containing 50% glycerol, 0.5% BSA and 0.02% sodium azide.
Isotype	IgG
Validated Applications	IHC
Reactivity Species	Human
Positive Control	Aorta endothelial cell, Colon, Kidney, Lung, T-cell, Testis,
Conjugation	unconjugated

*AREX continuously optimizes our products. Webpage content may not reflect the latest updates. For inquiries, please contact info@arexbio.com or your local distributor.

*Clone Number, Reactivity, Source/Host and Clonality can be found in the product name and Key Features section above.

DATASHEET**POLE Rabbit Polyclonal Antibody**

CAT. NO. ARA6393

DATA

Immunohistochemistry analysis of paraffin-embedded human breast carcinoma tissue, using POLE Rabbit Polyclonal Antibody. The picture on the right is blocked with the synthesized peptide.

STORAGE

Shipped at 4°C. Store at -20°C for one year. Avoid repeated freeze/thaw cycles.

NOTE

For Research Use Only. Not for diagnostic, therapeutics, prophylactic or in vivo use.

More information: www.arexbio.com