

**DATASHEET**

**MAGEA3 Mouse Monoclonal Antibody(ARA684)**

**CAT. NO. ARA6406**

**KEY FEATURES**

Target	MAGEA3	Source / Host	Mouse
Reactivity	Human	Clonality	Monoclonal
Applications	IHC	Storage	-20°C

**BACKGROUND**

This gene is a member of the MAGEA gene family. The members of this family encode proteins with 50 to 80% sequence identity to each other. The promoters and first exons of the MAGEA genes show considerable variability, suggesting that the existence of this gene family enables the same function to be expressed under different transcriptional controls. The MAGEA genes are clustered at chromosomal location Xq28. They have been implicated in some hereditary disorders, such as dyskeratosis congenita. [provided by RefSeq, Jul 2008]

**APPLICATION**

To ensure optimal assay performance, AREX recommends conducting reagent titration tailored to each testing system for optimal detection results.

IHC	1:100-1:200
-----	-------------

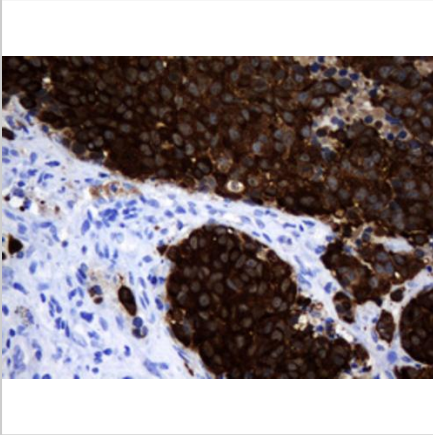
\*Results are sample-specific. Please refer to your local assay conditions and test parameters for reference.

**PRODUCT OVERVIEW**

Reactivity	Human
Host	Mouse
Clonality	Monoclonal
Immunogen	Full length human recombinant protein of human MAGEA3 (NP_005353) produced in HEK293T cell.
Isotype	IgG2a
Form/Buffer	PBS (pH 7.3) containing 1% BSA, 50% glycerol and 0.02% sodium azide.
Purification	Purified from mouse ascites fluids or tissue culture supernatant by affinity chromatography (protein A/G)
Conjugation	Unconjugated
Predicted Protein Size	34.6 kDa
Gene Name	MAGE family member A3
Synonyms	CT1.3; HIP8; HYPD; MAGE3; MAGEA6

\*AREX continuously optimizes our products. Webpage content may not reflect the latest updates. For inquiries, please contact [info@arexbio.com](mailto:info@arexbio.com) or your local distributor.

\*Clone Number, Reactivity, Source/Host and Clonality can be found in the product name and Key Features section above.

**DATASHEET****MAGEA3 Mouse Monoclonal Antibody(ARA684)****CAT. NO. ARA6406****DATA**

Immunohistochemical staining of paraffin-embedded Carcinoma of Human lung tissue using MAGEA3 Mouse Monoclonal Antibody(ARA684).

**STORAGE**

Shipped at 4°C. Store at -20°C for one year. Avoid repeated freeze/thaw cycles.

**NOTE**

For Research Use Only. Not for diagnostic, therapeutics, prophylactic or in vivo use.

More information: [www.arexbio.com](http://www.arexbio.com)