

**DATASHEET**

**AREX® Fluor 594 Mouse IgG(H+L) Multiclonal Goat Monoclonal antibody**

**CAT. NO. ARA6454**

**KEY FEATURES**

Target	Mouse IgG(H+L)	Source / Host	Goat
Reactivity	Mouse	Clonality	Multiclonal
Applications	IF/ICC, FC	Storage	-20°C

**BACKGROUND**

AREX Multiclonal Monoclonal Antibodies are precision-engineered formulations of recombinant monoclonal antibodies, each targeting distinct complementary epitopes on the same IgG molecule. Every recombinant clone included in the final multiclonal mixture undergoes stringent characterization and screening to ensure exceptional functional performance. Candidate clones are then combined in varying ratios, with each combination functionally validated across multiple experimental applications to identify the optimal formulation. Critically, each production lot of AREX Multiclonal Monoclonal Antibody uses the identical set of high-performance recombinant clones, ensuring exceptional batch-to-batch consistency and highly reproducible experimental results.

**APPLICATION**

To ensure optimal assay performance, AREX recommends conducting reagent titration tailored to each testing system for optimal detection results.

IF/ICC	1:200-1:1000
FC	1:200-1:1000

\*Results are sample-specific. Please refer to your local assay conditions and test parameters for reference.

**PRODUCT OVERVIEW**

Host Species	Goat
Species Reactivity	Mouse
Physical State	Liquid
Purity	The antibody was purified from culture media supernatant by immunoaffinity chromatography using Protein G beads.
Form/Buffer	PBS with 50% glycerol, 10 mg/mL BSA, 0.1% Proclin-300, pH 7.4.
Fluorophore	AREX® Fluor 594, Amax=588 nm, Emax=604 nm
Clonality	Multiclonal recombinant

\*AREX continuously optimizes our products. Webpage content may not reflect the latest updates. For inquiries, please contact [info@arexbio.com](mailto:info@arexbio.com) or your local distributor.

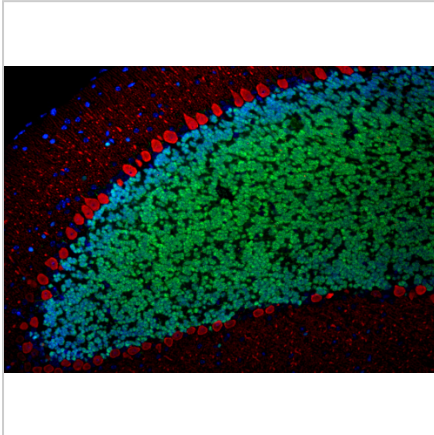
\*Clone Number, Reactivity, Source/Host and Clonality can be found in the product name and Key Features section above.

**DATASHEET**

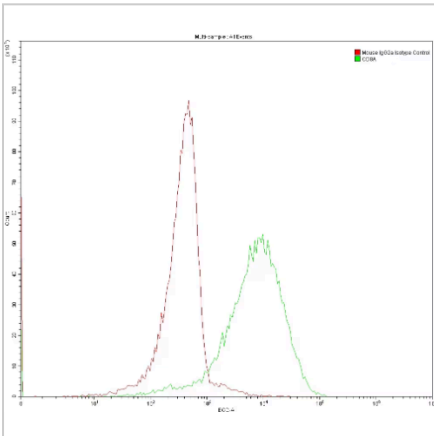
**AREX® Fluor 594 Mouse IgG(H+L) Multiclonal Goat Monoclonal antibody**

**CAT. NO. ARA6454**

**DATA**



Immunofluorescence of mouse cerebellum: mouse cerebellum FFPE section was stained with NeuN Rabbit polyclonal antibody (green) and Calbindin-D28k mouse monoclonal antibody (red). AREX® Fluor 488 Rabbit IgG(H+L) Multiclonal Goat Monoclonal antibody and AREX® Fluor 594 Mouse IgG(H+L) Multiclonal Goat Monoclonal antibody were used for detection.



1X10<sup>6</sup> MOLT4 were surface stained with 0.2 ug Human CD8 and Mouse IgG2a Isotype Control. AREX® Fluor 594 Mouse IgG(H+L) Multiclonal Goat Monoclonal antibody was used at 1:500 for detection.

**STORAGE**

Shipped at 4°C. Store at -20°C for one year. Avoid repeated freeze/thaw cycles.

**NOTE**

For Research Use Only. Not for diagnostic, therapeutics, prophylactic or in vivo use.

More information: [www.arexbio.com](http://www.arexbio.com)