

DATASHEET

Succinyllysine Rabbit Polyclonal Antibody

CAT. NO. ARA6483

KEY FEATURES

Target	Succinyllysine	Source / Host	Rabbit
Reactivity	All	Clonality	polyclonal
Applications	WB	Storage	-20°C

BACKGROUND

Succinylation is a post-translational modification that involves the addition of a succinyl group (-CO-CH₂-CH₂-CO₂ h) is added to a lysine residue of a protein molecule. This modification is found in many proteins, including histones. Although the precise implications of succinylation are under investigation, due to its impact on lysine's charge, transitioning it from +1 to -1 (under physiological pH conditions), and because succinylation introduces a relatively substantial structural moiety with a mass of 100 Da, which is notably larger than the moieties introduced by acetylation (42 Da) or methylation (14 Da), succinylation is anticipated to induce more substantial alterations in both protein structure and function. Key players in the succinylation process comprise 'writers' such as carnitine palmitoyltransferase 1A (CPT1A) and lysine acetyltransferase 2A (KAT2A/GCN5), 'erasers' like sirtuin 5 (SIRT5) and sirtuin 7 (SIRT7), and the pH-dependent reader, the YEATS domain of glioma-amplified sequence 41 (GAS41).

APPLICATION

To ensure optimal assay performance, AREX recommends conducting reagent titration tailored to each testing system for optimal detection results.

WB	1:500 - 1:1000
----	----------------

*Results are sample-specific. Please refer to your local assay conditions and test parameters for reference.

PRODUCT OVERVIEW

Isotype	IgG
Conjugate	Unconjugated
Synonyms	Ksu
Immunogen	Succinylated lysine peptides
Molecular Weight (MW)	Multiple
Specificity	Anti-Succinyllysine Rabbit pAb detects proteins post-translationally modified by succinylation on lysine residues. This pan antibody recognizes succinylated lysine independent of its surrounding sequences.
Host	Rabbit
Clonality	Polyclonal
Reactivity	All
Purity	Protein A and immunogen affinity purified
Constituents	PBS, Glycerol, BSA
Stability	Stable for 12 months from date of receipt/reconstitution.

*AREX continuously optimizes our products. Webpage content may not reflect the latest updates. For inquiries, please contact info@arexbio.com or your local distributor.

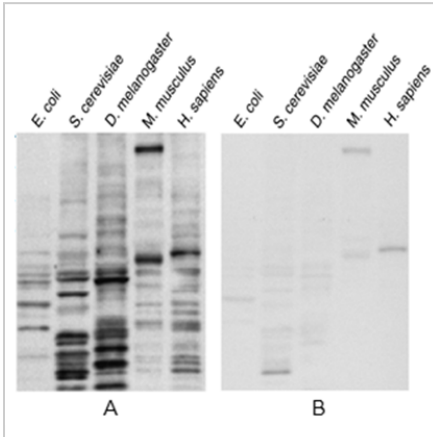
*Clone Number, Reactivity, Source/Host and Clonality can be found in the product name and Key Features section above.

DATASHEET

Succinyllysine Rabbit Polyclonal Antibody

CAT. NO. ARA6483

DATA



Lysates: E. coli, S. cerevisiae, D. melanogaster, mouse, and human cells
 Protein loading amount: 20 µg
 Blocking buffer: 5% NFDN/TBST
 Primary Ab dilution: 1:1000
 Primary Ab incubation condition: 2 hours at room temperature
 Secondary Ab: Goat Anti-Rabbit IgG H&L pAb (HRP Conjugate)
 Exposure time: 60 seconds
 Predicted band size: Multiple
 Observed band size: Multiple

STORAGE

Shipped at 4°C. Store at -20°C for one year. Avoid repeated freeze/thaw cycles.

NOTE

For Research Use Only. Not for diagnostic, therapeutics, prophylactic or in vivo use.

More information: www.arexbio.com