

DATASHEET

CD289 Rabbit Polyclonal Antibody

CAT. NO. ARA6489

KEY FEATURES

Target	CD289	Source / Host	Rabbit
Reactivity	Human, Mouse, Rat	Clonality	polyclonal
Applications	WB, IHC	Storage	-20°C

BACKGROUND

CD289, the Toll-like Receptors (TLR) are a family of human receptors that share homology with the Drosophila Toll Receptors, which are involved in mediating dorsoventral polarization in developing Drosophila embryos and participate in host immunity. The TLR family members are characterized by a highly conserved Toll homology (TH) domain, which is essential for Toll-induced signal transductions. TLRs are type I transmembrane receptors that contain an extracellular domain consisting of several leucine-rich regions and a single cytoplasmic Toll/IL-1R like domain. Three TLR family members, TLR7, TLR8 and TLR9, belong to a subfamily of TLRs which are differentially expressed. TLR7 is expressed in lung, placenta and spleen. TLR8 is expressed in lung and peripheral blood leukocytes, and TLR9 is predominantly expressed in spleen, lymph nodes, bone marrow and peripheral blood leukocytes. TLR7, TLR8 and TLR9 stimulate the NFκB signaling pathway, suggesting that they play a role in the immune response.

APPLICATION

To ensure optimal assay performance, AREX recommends conducting reagent titration tailored to each testing system for optimal detection results.

WB	1:500 - 1:2000
IHC	1:50 - 1:200

*Results are sample-specific. Please refer to your local assay conditions and test parameters for reference.

PRODUCT OVERVIEW

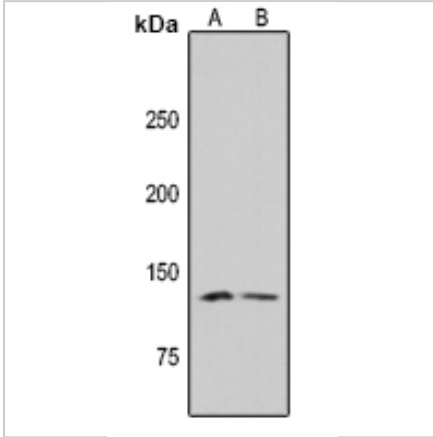
Immunogen	KLH-conjugated synthetic peptide encompassing a sequence within the center region of human CD289. The exact sequence is proprietary.
Purification	The antibody was purified by immunogen affinity chromatography.
Form/Buffer	Liquid in 0.42% Potassium phosphate, 0.87% Sodium chloride, pH 7.3, 30% glycerol, and 0.01% sodium azide.
Gene Name	TLR9
Alternative Names	Toll-like receptor 9; CD289
Human Gene ID	54106
Mouse Gene ID	81897
Human Protein ID	Q9NR96
Mouse Protein ID	Q9EQU3

*AREX continuously optimizes our products. Webpage content may not reflect the latest updates. For inquiries, please contact info@arexbio.com or your local distributor.

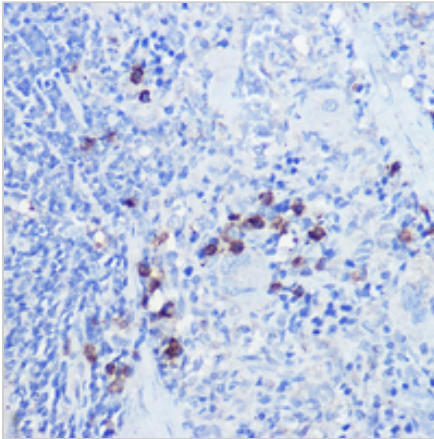
*Clone Number, Reactivity, Source/Host and Clonality can be found in the product name and Key Features section above.

DATASHEET**CD289 Rabbit Polyclonal Antibody**

CAT. NO. ARA6489

DATA

Western blot analysis of CD289 expression in mouse spleen (A), rat spleen (B) whole cell lysates. (Predicted band size: 109; 114; 115; 118 kD; Observed band size: 135 kD)



Immunohistochemical analysis of CD289 staining in rat spleen formalin fixed paraffin embedded tissue section. The section was pre-treated using heat mediated antigen retrieval with sodium citrate buffer (pH 6.0). The section was then incubated with the antibody at room temperature and detected using an HRP conjugated compact polymer system. DAB was used as the chromogen. The section was then counterstained with haematoxylin and mounted with DPX.

STORAGE

Shipped at 4°C. Store at -20°C for one year. Avoid repeated freeze/thaw cycles.

NOTE

For Research Use Only. Not for diagnostic, therapeutics, prophylactic or in vivo use.

More information: www.arexbio.com