

DATASHEET

HIV1 Reverse transcriptase Rabbit Polyclonal Antibody

CAT. NO. ARA6505

KEY FEATURES

Target	HIV1 Reverse transcriptase	Source / Host	Rabbit
Reactivity	Human Immunodeficiency virus	Clonality	Polyclonal
Applications	WB, IP, Dot, ELISA	Storage	-20°C

BACKGROUND

HIV-1 reverse transcriptase is an RNA-dependent DNA polymerase of HIV-1(AIDS virus), subtype B origin. It also has RNaseH activity and is an enzyme indispensable to the reproduction of AIDS virus.

APPLICATION

To ensure optimal assay performance, AREX recommends conducting reagent titration tailored to each testing system for optimal detection results.

WB	Assay dependent
IP	Assay dependent
DOT	Assay dependent
ELISA	Assay dependent

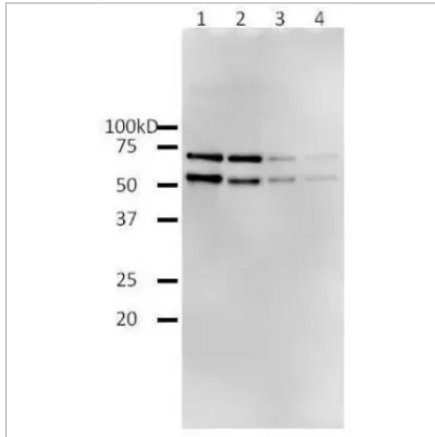
*Results are sample-specific. Please refer to your local assay conditions and test parameters for reference.

PRODUCT OVERVIEW

Form/Buffer	Serum, 0.09% Sodium azide
Immunogen	Full-size functional recombinant HIV-1 expressed and purified from E. coli
Conjugation	Unconjugated
Isotype	IgG
Reactivity	Human Immunodeficiency virus 1, Human Immunodeficiency virus

*AREX continuously optimizes our products. Webpage content may not reflect the latest updates. For inquiries, please contact info@arexbio.com or your local distributor.

*Clone Number, Reactivity, Source/Host and Clonality can be found in the product name and Key Features section above.

DATASHEET**HIV1 Reverse transcriptase Rabbit Polyclonal Antibody****CAT. NO. ARA6505****DATA**

Detection of HIV-1 reverse transcriptase in the extract of HIV-1 infected cells by Western blotting using HIV1 Reverse transcriptase Rabbit Polyclonal Antibody.

STORAGE

Shipped at 4°C. Store at -20°C for one year. Avoid repeated freeze/thaw cycles.

NOTE

For Research Use Only. Not for diagnostic, therapeutics, prophylactic or in vivo use.

More information: www.arexbio.com