

DATASHEET

Prohibitin Rabbit Monoclonal Antibody(ARA729)

CAT. NO. ARA6516

KEY FEATURES

Target	Prohibitin	Source / Host	Rabbit
Reactivity	Human, Mouse, Rat	Clonality	Monoclonal
Applications	WB, IHC, IF/ICC, IP	Storage	-20°C

BACKGROUND

Prohibitin is from an evolutionarily conserved gene that is ubiquitously expressed. It is thought to be a negative regulator of cell proliferation and may be a tumor suppressor. Mutations in PHB have been linked to sporadic breast cancer. Prohibitin is expressed as two transcripts with varying lengths of 3' untranslated region. The longer transcript is present at higher levels in proliferating tissues and cells, suggesting that this longer 3' untranslated region may function as a trans-acting regulatory RNA.

APPLICATION

To ensure optimal assay performance, AREX recommends conducting reagent titration tailored to each testing system for optimal detection results.

WB	1:500 - 1:1000
IF/ICC	1:100 - 1:1000
IHC	1:200 - 1:1000
IP	1-2µg/sample
FC	1:800 - 1:1000

*Results are sample-specific. Please refer to your local assay conditions and test parameters for reference.

PRODUCT OVERVIEW

Antibody Type	Recombinant Rabbit monoclonal Antibody
Immunogen	Synthetic peptide within Human Prohibitin aa 147-196 / 272.
Molecular Weight	Predicted band size: 30 kDa
Positive Control	HEK-293 cell lysate, NIH/3T3 cell lysate, PC-12 cell lysate, Mouse kidney tissue lysate, Rat brain tissue lysate, Rat kidney tissue lysate, hybrid fish (crucian-carp) liver tissue lysates, HepG2, PC-12, NIH/3T3, human liver carcinoma tissue, human kidney tissue, mouse liver tissue, mouse kidney tissue, mouse stomach tissue, mouse heart tissue, human liver tissue.
Conjugation	unconjugated
Form/Buffer	1×TBS (pH7.4), 0.05% BSA, 40% Glycerol. Preservative: 0.05% Sodium Azide.
Isotype	IgG
Purification	Protein A affinity purified.

*AREX continuously optimizes our products. Webpage content may not reflect the latest updates. For inquiries, please contact info@arex.bio or your local distributor.

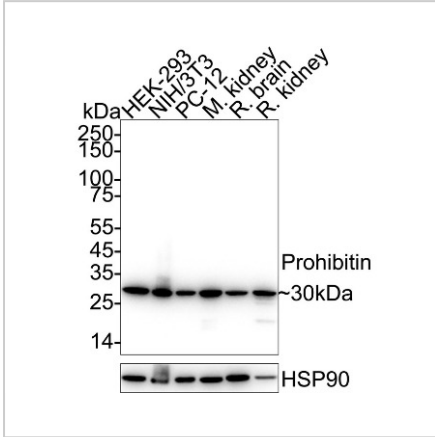
*Clone Number, Reactivity, Source/Host and Clonality can be found in the product name and Key Features section above.

DATASHEET

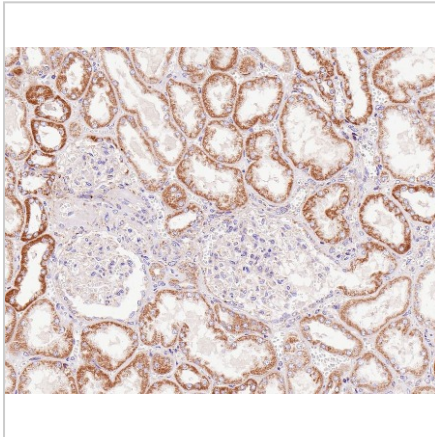
Prohibitin Rabbit Monoclonal Antibody(ARA729)

CAT. NO. ARA6516

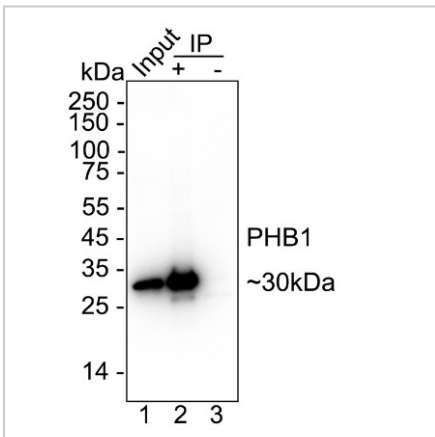
DATA



Western blot analysis of Prohibitin on different lysates with Prohibitin Rabbit Monoclonal Antibody(ARA729).



Immunohistochemical analysis of paraffin-embedded human kidney tissue with Prohibitin Rabbit Monoclonal Antibody(ARA729).



Prohibitin was immunoprecipitated from 0.2 mg HEK-293 cell lysate with Prohibitin Rabbit Monoclonal Antibody(ARA729).

STORAGE

Shipped at 4°C. Store at -20°C for one year. Avoid repeated freeze/thaw cycles.

NOTE

For Research Use Only. Not for diagnostic, therapeutics, prophylactic or in vivo use.

More information: www.arexbio.com