

## DATASHEET

# MGMT Rabbit Monoclonal Antibody(ARA735)

CAT. NO. ARA6522

### KEY FEATURES

Target	MGMT	Source / Host	Rabbit
Reactivity	Human	Clonality	Monoclonal
Applications	WB,IHC,FC,IP	Conjugation	Unconjugated
Storage	at-20°C		

### BACKGROUND

Involved in the cellular defense against the biological effects of O6-methylguanine (O6-MeG) and O4-methylthymine (O4-MeT) in DNA. Repairs the methylated nucleobase in DNA by stoichiometrically transferring the methyl group to a cysteine residue in the enzyme. This is a suicide reaction: the enzyme is irreversibly inactivated.

### APPLICATION

To ensure optimal assay performance, AREX recommends conducting reagent titration tailored to each testing system for optimal detection results.

WB	1:5000-1:10000
IHC	1:100-1:200
FC	1:10-1:200
IP	1:80

\*Results are sample-specific. Please refer to your local assay conditions and test parameters for reference.

### PRODUCT OVERVIEW

Description	Rabbit Monoclonal Antibody to MGMT
Antibody Type	Primary antibody
Predicted MW	22kDa
Immunogen	A synthetic peptide corresponding to residues on the N-terminus of human MGMT was used as an immunogen.
Purification	ProA affinity purified IgG
Form / Buffer	PBS 59%, Sodium azide 0.01%, Glycerol 40%, BSA 0.10%.
Alternative Names	Methylated-DNA--protein-cysteine methyltransferase; 6-O-methylguanine-DNA methyltransferase; MGMT; O-6-methylguanine-DNA-alkyltransferase
Gene Symbol	MGMT
Entrez Gene	4255(Human)
Swissprot ID	P16455

\*AREX continuously optimizes our products. Webpage content may not reflect the latest updates. For inquiries, please contact [info@arexbio.com](mailto:info@arexbio.com) or your local distributor.

\*Clone Number, Reactivity, Source/Host and Clonality can be found in the product name and Key Features section above.

**DATASHEET**

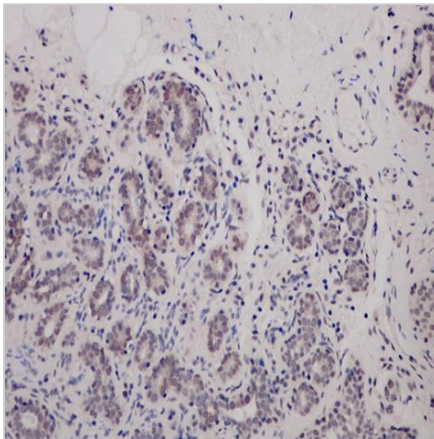
**MGMT Rabbit Monoclonal Antibody(ARA735)**

CAT. NO. ARA6522

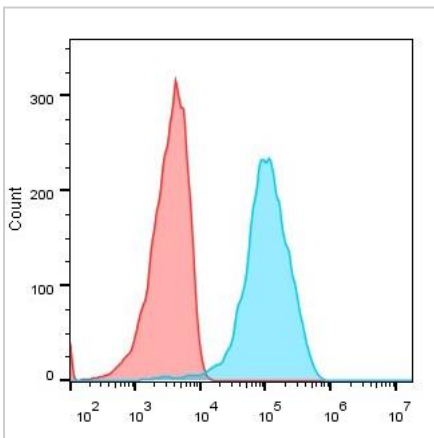
**DATA**



All lanes: Anti-MGMT antibody at 1:5,000 dilution Predicted MW: 22 kDa Observed MW: 22 kDa Lane 1: MCF-7 Lane 2: Jurkat Lane 3: HeLa Lane 4: HT-29 Lysates at 20 µg per lane 2nd Ab: GAR HRP(H+L) 1:10,000 Exposure: 120s



Immunohistochemistry (Formalin/PFA-fixed paraffin-embedded sections) analysis of human breast tissue labelling MGMT with ARA735 at 1:200. Heat mediated antigen retrieval was performed using Tris/EDTA buffer pH 9.0.



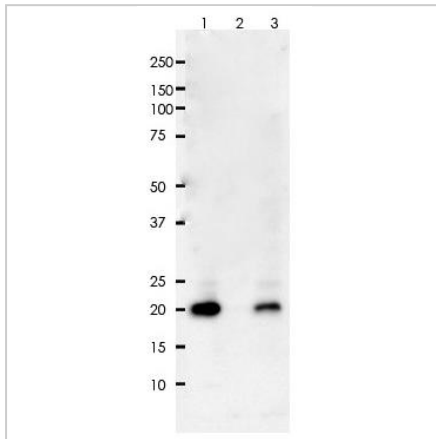
Overlay histogram showing Jurkat cells stained with ARA735 (Blue). The cells were fixed with 4% paraformaldehyde (10 min) and then permeabilized with 0.1% TritonX-100 for 15 min. The cells were then incubated in the antibody (ARA735, 1:50 dilution) in 1x PBS/1% BSA for 30 min at 4°C. The secondary antibody used was a Goat Anti-Rabbit Alexa Fluor® 488 (IgG H+L) at 1:2,000 dilution for 20 min at 4°C. Unlabelled sample (Red) was used as a control.

**DATASHEET**

**MGMT Rabbit Monoclonal Antibody(ARA735)**

CAT. NO. ARA6522

**DATA**



MGMT was immunoprecipitated from 0.4 mg of Hela whole cell lysate with ARA735 at 1:80 dilution. 2nd Ab: GAR HRP for IP 1:500 Lane 1: ARA735 IP in Hela whole cell lysate Lane 2: PBS instead of ARA735 in Hela whole cell lysate Lane 3: Hela whole cell lysate, 10 µg (input) Exposure: 120s

**STORAGE**

Store at 4°C short term. For long term storage, store at -20°C, avoiding freeze/thaw cycles.

**NOTE**

For Research Use Only. Not for diagnostic, therapeutics, prophylactic or in vivo use.

More information: [www.arexbio.com](http://www.arexbio.com)