

DATASHEET

Cytokeratin 20 Rabbit Monoclonal Antibody(ARA763)

CAT. NO. ARA6550

KEY FEATURES

Target	Cytokeratin 20	Source / Host	Rabbit
Reactivity	Human	Clonality	Monoclonal
Applications	WB,IHC,IP,FC,IF/ICC	Conjugation	Unconjugated
Storage	at-20°C		

BACKGROUND

Plays a significant role in maintaining keratin filament organization in intestinal epithelia. When phosphorylated, plays a role in the secretion of mucin in the small intestine .

APPLICATION

To ensure optimal assay performance, AREX recommends conducting reagent titration tailored to each testing system for optimal detection results.

WB	1:5000-1:20000
IHC	1:800-1:1600
IF/ICC	1:50-1:2000
FC	1:10-1:1000
IP	1:50

*Results are sample-specific. Please refer to your local assay conditions and test parameters for reference.

PRODUCT OVERVIEW

Description	Rabbit Monoclonal Antibody to Cytokeratin 20
Antibody Type	Primary antibody
Predicted MW	49kDa
Immunogen	A synthetic peptide corresponding to residues on the C-terminus of human Cytokeratin 20 was used as an immunogen.
Purification	ProA affinity purified IgG
Form / Buffer	PBS 59%, Sodium azide 0.01%, Glycerol 40%, BSA 0.38%.
Alternative Names	Keratin, type I cytoskeletal 20; Cytokeratin-20; CK-20; Keratin-20; K20; Protein IT
Gene Symbol	KRT20
Entrez Gene	54474(Human)
Swissprot ID	P35900

*AREX continuously optimizes our products. Webpage content may not reflect the latest updates. For inquiries, please contact info@arex.bio or your local distributor.

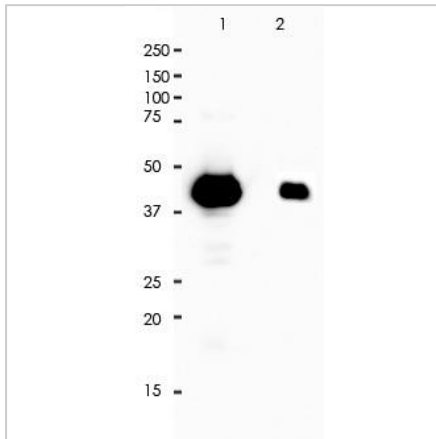
*Clone Number, Reactivity, Source/Host and Clonality can be found in the product name and Key Features section above.

DATASHEET

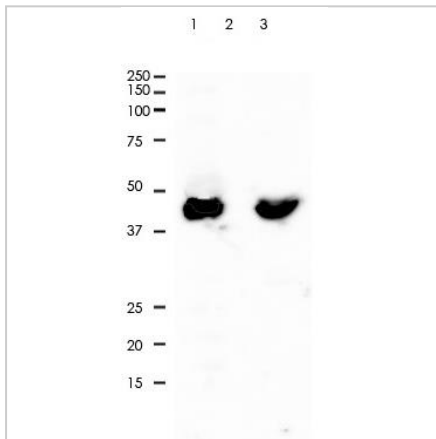
Cytokeratin 20 Rabbit Monoclonal Antibody(ARA763)

CAT. NO. ARA6550

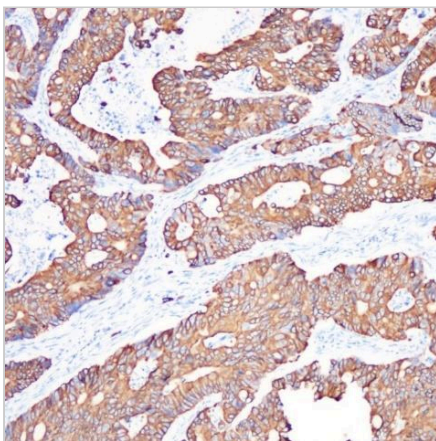
DATA



All lanes: Anti-Cytokeratin 20 antibody at 1:5,000 dilution Predicted MW: 49 kDa
Observed MW: 49 kDa Lane 1: HCT-116 Lane 2: HT-29 Lysate at 10 µg per lane 2nd Ab: G&R HRP(H+L) 1:10,000 Exposure: 120s



Anti-Cytokeratin 20 was immunoprecipitated from 0.5mg of HT-29 lysate with ARA763 at 1:50 dilution. 2nd Ab: G&R HRP for IP 1:500 Lane 1: ARA763 IP in HT-29 whole cell lysate Lane 2: PBS instead of ARA763 in HT-29 whole cell lysate Lane3: HT-29 whole cell lysate, 10 µg(input) Exposure: 30s



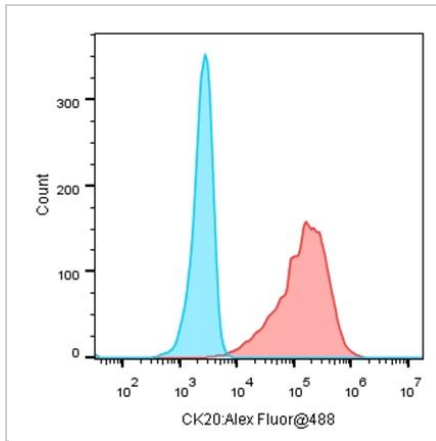
Immunohistochemistry (Formalin/PFA-fixed paraffin-embedded sections) analysis of colonic adenocarcinoma tissue labelling Cytokeratin 20 with ARA763 at 1:800. Heat mediated antigen retrieval was performed using Tris/EDTA buffer pH 9.0.

DATASHEET

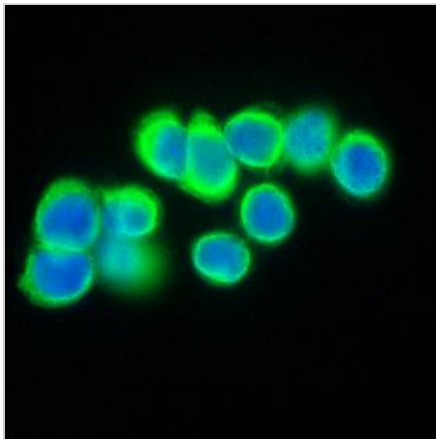
Cytokeratin 20 Rabbit Monoclonal Antibody(ARA763)

CAT. NO. ARA6550

DATA



Overlay histogram showing HT-29 cells stained with ARA763 (Red). The cells were fixed with 4% paraformaldehyde (10 min) and then permeabilized with 0.1% TritonX-100 for 15 min. The cells were then incubated in the antibody (ARA763 , 1:1,000 dilution) in 1x PBS/1% BSA for 30 min at 4°C. The secondary antibody used was a Goat Anti-Rabbit Alexa Fluor® 488 (IgG H+L) at 1:2,000 dilution for 20 min at 4°C. Unlabelled sample (Blue) was used as a control.



ARA763 staining Cytokeratin 20 in HT-29 cells by IF/ICC (Immunocytochemistry/immunofluorescence). Cells were fixed with paraformaldehyde, permeabilized with 0.1% Triton X-100 and blocked with 10% goat serum for half an hour at room temperature. Samples were incubated with primary antibody (1:200) at 4°C. An Alexa Fluor® 488-conjugated Goat Anti-Rabbit IgG polyclonal was used as the secondary antibody (1:500).

STORAGE

Store at 4°C short term. For long term storage, store at -20°C, avoiding freeze/thaw cycles.

NOTE

For Research Use Only. Not for diagnostic, therapeutics, prophylactic or in vivo use.

More information: www.arexbio.com