

DATASHEET

CD3E Rabbit Monoclonal Antibody(ARA770)

CAT. NO. ARA6557

KEY FEATURES

Target	CD3E	Source / Host	Rabbit
Reactivity	Human	Clonality	Monoclonal
Applications	IHC,FC	Conjugation	Unconjugated
Storage	at-20°C		

BACKGROUND

Part of the TCR-CD3 complex present on T-lymphocyte cell surface that plays an essential role in adaptive immune response . When antigen presenting cells (APCs) activate T-cell receptor (TCR), TCR-mediated signals are transmitted across the cell membrane by the CD3 chains CD3D, CD3E, CD3G and CD247/CD3Z . All CD3 chains contain immunoreceptor tyrosine-based activation motifs (ITAMs) in their cytoplasmic domain . Upon TCR engagement, these motifs become phosphorylated by Src family protein tyrosine kinases LCK and FYN, resulting in the activation of downstream signaling pathways . CD3E ITAM phosphorylation creates docking sites for the protein kinase ZAP70 leading to ZAP70 phosphorylation and its conversion into a catalytically active enzyme .

APPLICATION

To ensure optimal assay performance, AREX recommends conducting reagent titration tailored to each testing system for optimal detection results.

IHC	1:100-1:200
FC	1:10-1:50

*Results are sample-specific. Please refer to your local assay conditions and test parameters for reference.

PRODUCT OVERVIEW

Description	Rabbit Monoclonal Antibody to CD3E
Antibody Type	Primary antibody
Predicted MW	23kDa
Immunogen	Immunohistochemistry (Formalin/PFA-fixed paraffin-embedded sections) A synthetic peptide corresponding to the C-term of analysis of Tonsil tissue labelling CD3E with RR661 at 1:200. Heat CD3E was used as an immunogen. mediated antigen retrieval was performed using Tris/EDTA buffer pH 9.0.
Purification	ProA affinity purified IgG
Form / Buffer	PBS 59%, Sodium azide 0.01%, Glycerol 40%, BSA 0.45%.
Alternative Names	T3E; T-cell surface glycoprotein CD3 epsilon chain; T-cell surface antigen T3/Leu-4 epsilon chain; CD3e
Gene Symbol	CD3E
Entrez Gene	916(Human)
Swissprot ID	P07766

*AREX continuously optimizes our products. Webpage content may not reflect the latest updates. For inquiries, please contact info@arexbio.com or your local distributor.

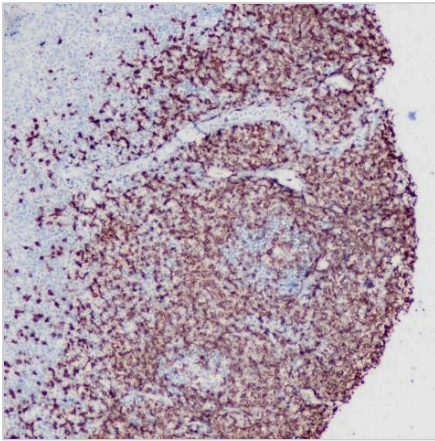
*Clone Number, Reactivity, Source/Host and Clonality can be found in the product name and Key Features section above.

DATASHEET

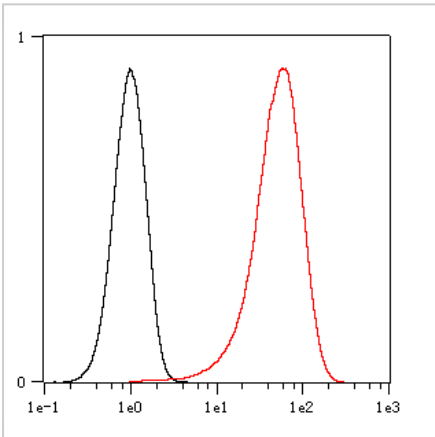
CD3E Rabbit Monoclonal Antibody(ARA770)

CAT. NO. ARA6557

DATA



Immunohistochemistry (Formalin/PFA-fixed paraffin-embedded sections) analysis of Tonsil tissue labelling CD3E with ARA770 at 1:200. Heat mediated antigen retrieval was performed using Tris/EDTA buffer pH 9.0.



Overlay histogram showing Raji cells stained with ARA770 (Red). The cells were fixed with 4% paraformaldehyde for 10 mins. The cells were then incubated in the antibody (ARA770 , 1:10 dilution) in 1x PBS/1% BSA for 30 min at room temperature. The secondary antibody used was a Goat Anti-Rabbit Alexa Fluor® 488 (IgG H+L) at 1:2,000 dilution for 20 min at room temperature . Unlabelled sample (Black) was used as a control.

STORAGE

Store at 4°C short term. For long term storage, store at -20°C, avoiding freeze/thaw cycles.

NOTE

For Research Use Only. Not for diagnostic, therapeutics, prophylactic or in vivo use.

More information: www.arexbio.com