

DATASHEET

Prostatic Acid Phosphatase Rabbit Monoclonal Antibody(ARA788)

CAT. NO. ARA6575

KEY FEATURES

Target	Prostatic Acid Phosphatase	Source / Host	Rabbit
Reactivity	Human	Clonality	Monoclonal
Applications	IHC,FC,IF/ICC	Conjugation	Unconjugated
Storage	at-20°C		

BACKGROUND

A non-specific tyrosine phosphatase that dephosphorylates a diverse number of substrates under acidic conditions (pH 4-6) including alkyl, aryl, and acyl orthophosphate monoesters and phosphorylated proteins. Has lipid phosphatase activity and inactivates lysophosphatidic acid in seminal plasma.

APPLICATION

To ensure optimal assay performance, AREX recommends conducting reagent titration tailored to each testing system for optimal detection results.

IHC	1:12800-1:25600
IF/ICC	1:50-1:200
FC	1:200-1:1000

*Results are sample-specific. Please refer to your local assay conditions and test parameters for reference.

PRODUCT OVERVIEW

Description	Rabbit Monoclonal Antibody to Prostatic Acid Phosphatase
Antibody Type	Primary antibody
Predicted MW	45kDa
Immunogen	A synthetic peptide corresponding to Prostatic Acid Phosphatase residues within aa1-100 was used as an immunogen.
Purification	ProA affinity purified IgG
Form / Buffer	PBS 59%, Sodium azide 0.01%, Glycerol 40%, BSA 0.63%.
Alternative Names	Prostatic acid phosphatase; PAP; 5'-nucleotidase; 5'-NT; Ecto-5'-nucleotidase; Thiamine monophosphatase; TMPase
Gene Symbol	ACPP
Entrez Gene	55(Human); 56318(Mouse); 56780(Rat)
Swissprot ID	P15309

*AREX continuously optimizes our products. Webpage content may not reflect the latest updates. For inquiries, please contact info@arexbio.com or your local distributor.

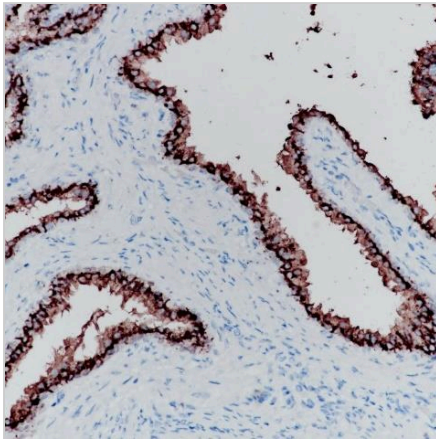
*Clone Number, Reactivity, Source/Host and Clonality can be found in the product name and Key Features section above.

DATASHEET

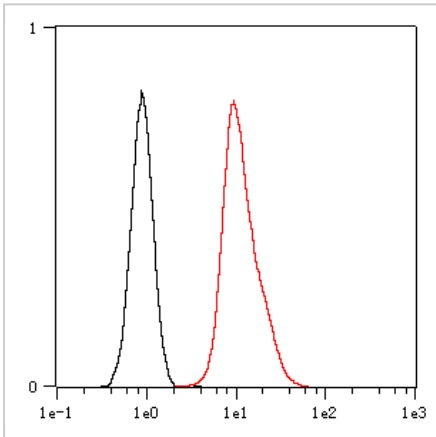
Prostatic Acid Phosphatase Rabbit Monoclonal Antibody(ARA788)

CAT. NO. ARA6575

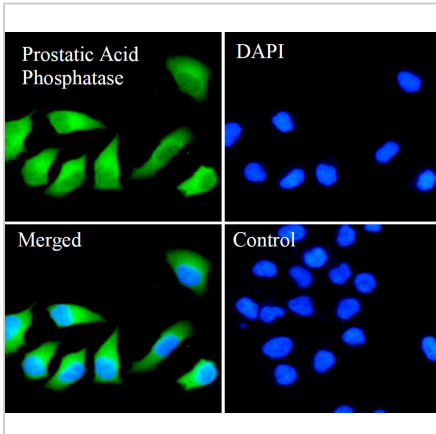
DATA



Immunohistochemistry (Formalin/PFA-fixed paraffin-embedded sections) analysis of human prostate cancer tissue labelling Prostatic Acid Phosphatase with ARA788 at 1:25,600. Heat mediated antigen retrieval was performed using Tris/EDTA buffer pH 9.0.



Overlay histogram showing HeLa cells stained with ARA788 (Red). The cells were fixed with 4% paraformaldehyde (10 min) and then permeabilized with 0.1% TritonX-100 for 15 min. The cells were then incubated in the antibody (ARA788, 1:200 dilution) in 1x PBS/1% BSA for 30 min at room temperature. The secondary antibody used was a Goat Anti-Rabbit Alexa Fluor® 488 (IgG H+L) at 1:2,000 dilution for 20 min at room temperature. Unlabelled sample (Black) was used as a control.



ARA788 staining Prostatic Acid Phosphatase in HeLa cells by IF/ICC (Immunocytochemistry/immunofluorescence). Cells were fixed with paraformaldehyde, permeabilized with 0.1% Triton X-100 and blocked with 10% goat serum for half an hour at room temperature. Samples were incubated with primary antibody (1:200) at 4°C. An Alexa Fluor® 594-conjugated Goat Anti-Rabbit IgG polyclonal was used as the secondary antibody (1:500). DAPI (blue) was used as the nuclear counter stain. Control: PBS and secondary antibody, An Alexa Fluor® 594-conjugated Goat Anti-Rabbit IgG(1:500).

STORAGE

Store at 4°C short term. For long term storage, store at -20°C, avoiding freeze/thaw cycles.

NOTE

For Research Use Only. Not for diagnostic, therapeutics, prophylactic or in vivo use.

More information: www.arexbio.com