

DATASHEET

NaK ATPase Rabbit Monoclonal Antibody(ARA792)

CAT. NO. ARA6579

KEY FEATURES

Target	NaK ATPase	Source / Host	Rabbit
Reactivity	Human, Mouse, Rat	Clonality	Monoclonal
Applications	WB,IHC,FC,IP	Conjugation	Unconjugated
Storage	at-20°C		

BACKGROUND

This is the catalytic component of the active enzyme, which catalyzes the hydrolysis of ATP coupled with the exchange of sodium and potassium ions across the plasma membrane. This action creates the electrochemical gradient of sodium and potassium ions, providing the energy for active transport of various nutrients.

APPLICATION

To ensure optimal assay performance, AREX recommends conducting reagent titration tailored to each testing system for optimal detection results.

WB	1:2000-1:5000
IHC	1:10000-1:20000
FC	1:50-1:200
IP	1:50

*Results are sample-specific. Please refer to your local assay conditions and test parameters for reference.

PRODUCT OVERVIEW

Description	Rabbit Monoclonal Antibody to NaK ATPase
Antibody Type	Primary antibody
Predicted MW	113kDa
Immunogen	A synthetic peptide corresponding to residues on the N-terminus of human NaK ATPase was used as an immunogen.
Purification	ProA affinity purified IgG
Form / Buffer	PBS 59%, Sodium azide 0.01%, Glycerol 40%, BSA 0.67%.
Alternative Names	Sodium/potassium-transporting ATPase subunit alpha-1; Na(+)/K(+) ATPase alpha-1 subunit; Sodium pump subunit alpha-1
Gene Symbol	ATP1A1
Entrez Gene	476(Human)
Swissprot ID	P05023

*AREX continuously optimizes our products. Webpage content may not reflect the latest updates. For inquiries, please contact info@arexbio.com or your local distributor.

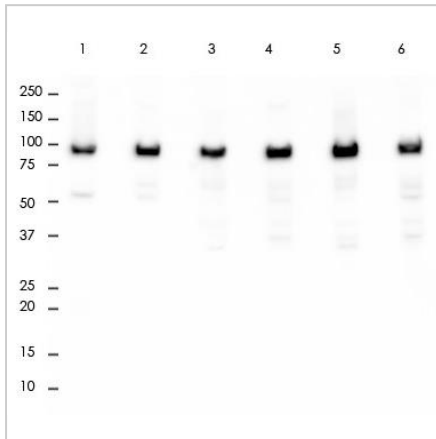
*Clone Number, Reactivity, Source/Host and Clonality can be found in the product name and Key Features section above.

DATASHEET

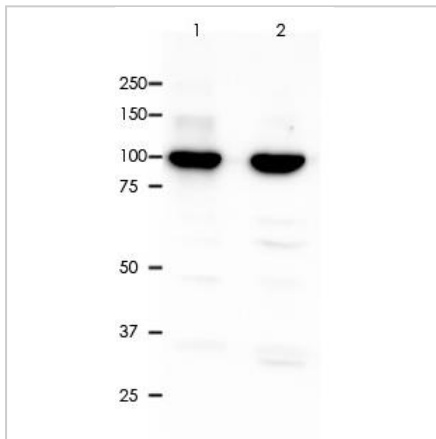
NaK ATPase Rabbit Monoclonal Antibody(ARA792)

CAT. NO. ARA6579

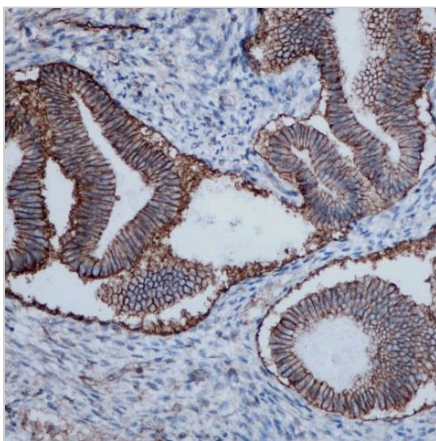
DATA



All lanes: Anti-NaK ATPase antibody at 1:2,000 dilution Predicted MW: 113 kDa Observed MW: 100 kDa Lane 1: 293 Lane 2: Hela Lane 3: MCF-7 Lane 4: Raji Lane 5: TT Lane 6: HCT-116 Lysate at 10 µg per lane 2nd Ab: GAR HRP(H+L) 1:5,000



All lanes: Anti-NaK ATPase antibody at 1:2,000 dilution Predicted MW: 113 kDa Observed MW: 100 kDa Lane 1: PC-12 Lane 2: Raw264.7 Lysate at 7 µg per lane 2nd Ab: GAR HRP(H+L) 1:5,000 Exposure: 50s



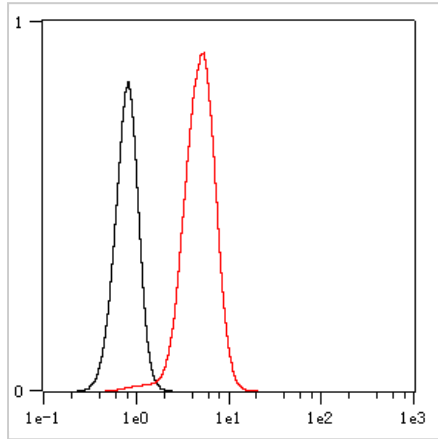
Immunohistochemistry (Formalin/PFA-fixed paraffin-embedded sections) analysis of endometrium tissue labelling NaK ATPase with ARA792 at 1:10,000. Heat mediated antigen retrieval was performed using Tris/EDTA buffer pH 9.0.

DATASHEET

NaK ATPase Rabbit Monoclonal Antibody(ARA792)

CAT. NO. ARA6579

DATA



Overlay histogram showing HeLa cells stained with ARA792 (Red). The cells were fixed with 4% paraformaldehyde (10 min) and then permeabilized with 0.1% TritonX-100 for 15 min. The cells were then incubated in the antibody (ARA792, 1:200 dilution) in 1x PBS/1% BSA for 30 min at room temperature. The secondary antibody used was a Goat Anti-Rabbit Alexa Fluor® 488 (IgG H+L) at 1:2,000 dilution for 20 min at room temperature. Unlabelled sample (Black) was used as a control.



NaK ATPase was immunoprecipitated from 0.4mg of TT whole cell lysate with ARA792 at 1:50 dilution. 2nd Ab: GAR HRP for IP 1:500 Lane 1: ARA792 IP in TT whole cell lysate Lane 2: PBS instead of ARA792 in TT whole cell lysate Lane 3: TT whole cell lysate, 10 µg (input) Exposure: 120s

STORAGE

Store at 4°C short term. For long term storage, store at -20°C, avoiding freeze/thaw cycles.

NOTE

For Research Use Only. Not for diagnostic, therapeutics, prophylactic or in vivo use.

More information: www.arexbio.com