

DATASHEET

Histone 3.1 Rabbit Monoclonal Antibody(ARA799)

CAT. NO. ARA6586

KEY FEATURES

Target	Histone 3.1	Source / Host	Rabbit
Reactivity	Human, Mouse, Rat, Bovine, Dog, Green Monkey, Zebrafish	Clonality	Monoclonal
Applications	WB,IHC,FC,IP	Conjugation	Unconjugated
Storage	at-20°C		

BACKGROUND

Core component of nucleosome. Nucleosomes wrap and compact DNA into chromatin, limiting DNA accessibility to the cellular machineries which require DNA as a template. Histones thereby play a central role in transcription regulation, DNA repair, DNA replication and chromosomal stability. DNA accessibility is regulated via a complex set of post-translational modifications of histones, also called histone code, and nucleosome remodeling.

APPLICATION

To ensure optimal assay performance, AREX recommends conducting reagent titration tailored to each testing system for optimal detection results.

WB	1:2000-1:5000
IHC	1:800-1:1600
FC	1:50-1:200
IP	1:100

*Results are sample-specific. Please refer to your local assay conditions and test parameters for reference.

PRODUCT OVERVIEW

Description	Rabbit Monoclonal Antibody to Histone 3.1
Antibody Type	Primary antibody
Predicted MW	15kDa
Immunogen	A synthetic peptide corresponding to residues aa1- 100 of human Histone 3.1 was used as an immunogen.
Purification	ProA affinity purified IgG
Form / Buffer	PBS 59%, Sodium azide 0.01%, Glycerol 40%, BSA 0.74%.
Alternative Names	HIST1H3A; H3FA; HIST1H3B; H3FL; HIST1H3C; H3FC; HIST1H3D; H3FB; HIST1H3E; H3FD; HIST1H3F; H3FI; HIST1H3G; H3FH; HIST1H3H; H3FK; HIST1H3I; H3FF; HIST1H3J; H3FJ; Histone H3.1; Histone H3/a; Histone H3/b; Histone H3/c; Histone H3/d; Histone H3/f; Histone H3/h; Histone H3/i; Histone H3/j; Histone H3/k; Histone H3/l; HIST2H3A; HIST2H3C; H3F2; H3FM; HIST2H3D; Histone H3.2; Histone H3/m; Histone H3/o; H3F3A; H3.3A; H3F3; PP781; H3F3B; H3.3B; Histone H3.3
Gene Symbol	HIST1H3A; HIST1H3B; HIST1H3C; HIST1H3D; HIST1H3E; HIST1H3F; HIST1H3G; HIST1H3H; HIST1H3I; HIST1H3J; HIST2H3A; HIST2H3C; HIST2H3D; H3F3A; H3F3B
Entrez Gene	8350; 8351; 8352; 8353; 8354; 8355; 8356; 8357; 8358; 8968(Human); 319152; 15077; 15078(Mouse); 291159; 100361558(Rat)
Swissprot ID	P68431

*AREX continuously optimizes our products. Webpage content may not reflect the latest updates. For inquiries, please contact info@arexbio.com or your local distributor.

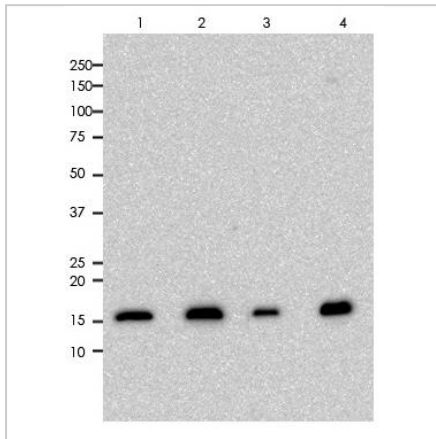
*Clone Number, Reactivity, Source/Host and Clonality can be found in the product name and Key Features section above.

DATASHEET

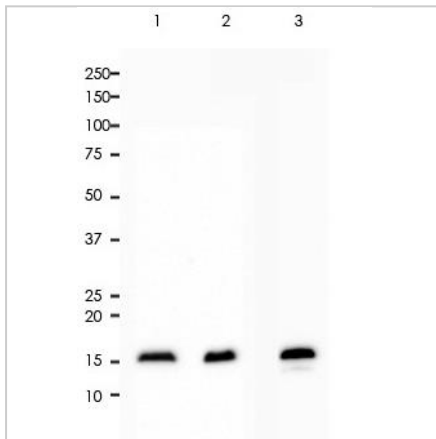
Histone 3.1 Rabbit Monoclonal Antibody(ARA799)

CAT. NO. ARA6586

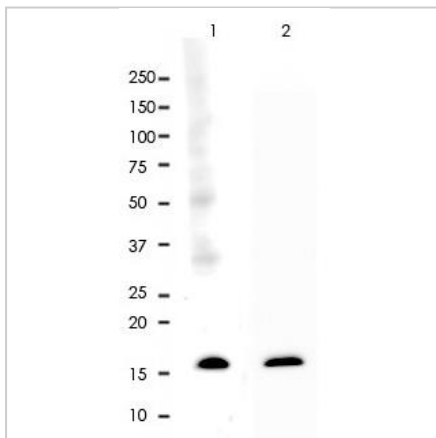
DATA



All lanes: Anti-Histone 3.1 antibody at 1:10,000 dilution Predicted MW: 15 kDa Observed MW: 15 kDa Lane 1: HeLa Lane 2: HT-29 Lane 3: MCF-7 Lane 4: Molt-4 Lysates at 10 µg per lane 2nd Ab: GAR HRP(H+L) 1:5,000 Exposure: 60s



All lanes: Anti-Histone 3.1 antibody at 1:5,000 dilution Predicted MW: 15 kDa Observed MW: 15 kDa Lane 1: A431 Lane 2: 293 Lane 3: HepG2 Lysates at 10 µg per lane 2nd Ab: GAR HRP(H+L) 1:5,000 Exposure: 120s



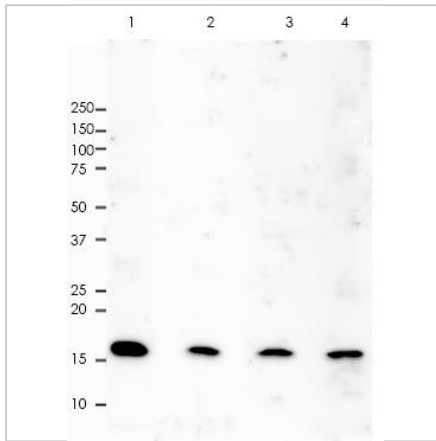
All lanes: Anti-Histone 3.1 antibody at 1:2,000 dilution Predicted MW: 15 kDa Observed MW: 15 kDa Lane 1: PC-12 Lane 2: Raw264.7 Lysates at 10 µg per lane 2nd Ab: GAR HRP(H+L) 1:5,000 Exposure: 20s

DATASHEET

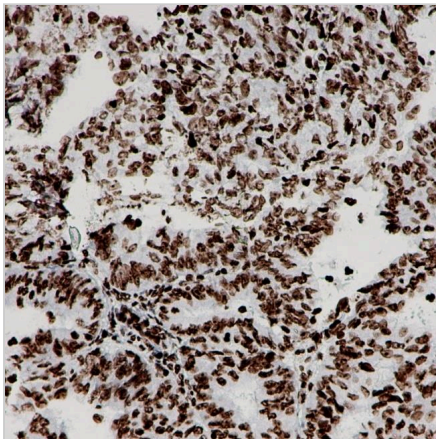
Histone 3.1 Rabbit Monoclonal Antibody(ARA799)

CAT. NO. ARA6586

DATA



All lanes: Anti-Histone 3.1 antibody at 1:2,000 dilution Predicted MW: 15 kDa Observed MW: 15 kDa Lane 1: MDBK Lane 2: MDCK Lane 3: Cos-7 Lane 4: Zebrafish Lysates at 10 µg per lane 2nd Ab: GAR HRP(H+L) 1:5,000 Exposure: 60s



Immunohistochemistry (Formalin/PFA-fixed paraffin-embedded sections) analysis of human endometrial cancer tissue labelling Histone 3.1 with ARA799 at 1:800. Heat mediated antigen retrieval was performed using Tris/EDTA buffer pH 9.0.

STORAGE

Store at 4°C short term. For long term storage, store at -20°C, avoiding freeze/thaw cycles.

NOTE

For Research Use Only. Not for diagnostic, therapeutics, prophylactic or in vivo use.

More information: www.arexbio.com