

DATASHEET

CD117 Rabbit Monoclonal Antibody(ARA808)

CAT. NO. ARA6595

KEY FEATURES

Target	CD117	Source / Host	Rabbit
Reactivity	Human	Clonality	Monoclonal
Applications	IHC,FC	Conjugation	Unconjugated
Storage	at-20°C		

BACKGROUND

Tyrosine-protein kinase that acts as a cell-surface receptor for the cytokine KITLG/SCF and plays an essential role in the regulation of cell survival and proliferation, hematopoiesis, stem cell maintenance, gametogenesis, mast cell development, migration and function, and in melanogenesis. In response to KITLG/SCF binding, KIT can activate several signaling pathways. Phosphorylates PIK3R1, PLCG1, SH2B2/APS and CBL. Activates the AKT1 signaling pathway by phosphorylation of PIK3R1, the regulatory subunit of phosphatidylinositol 3-kinase. Activated KIT also transmits signals via GRB2 and activation of RAS, RAF1 and the MAP kinases MAPK1/ERK2 and/or MAPK3/ERK1. Promotes activation of STAT family members STAT1, STAT3, STAT5A and STAT5B.

APPLICATION

To ensure optimal assay performance, AREX recommends conducting reagent titration tailored to each testing system for optimal detection results.

IHC	1:200-1:400
FC	1:10-1:50

*Results are sample-specific. Please refer to your local assay conditions and test parameters for reference.

PRODUCT OVERVIEW

Description	Rabbit Monoclonal Antibody to CD117
Antibody Type	Primary antibody
Predicted MW	110kDa
Immunogen	A synthetic peptide corresponding to residues on the C-terminus of human CD117 was used as an Immunohistochemistry (Formalin/PFA-fixed paraffin-embedded sections) immunogen. analysis of human prostate cancer tissue labelling CD117 with RR701 at
Purification	ProA affinity purified IgG
Form / Buffer	PBS 59%, Sodium azide 0.01%, Glycerol 40%, BSA 0.83%.
Alternative Names	SCFR; Mast/stem cell growth factor receptor Kit; SCFR; Piebald trait protein; PBT; Proto-oncogene c-Kit; Tyrosine-protein kinase Kit; p145 c-kit; v-kit Hardy-Zuckerman 4 feline sarcoma viral oncogene homolog; CD117
Gene Symbol	KIT
Entrez Gene	3815(Human)
Swissprot ID	P10721

*AREX continuously optimizes our products. Webpage content may not reflect the latest updates. For inquiries, please contact info@arexbio.com or your local distributor.

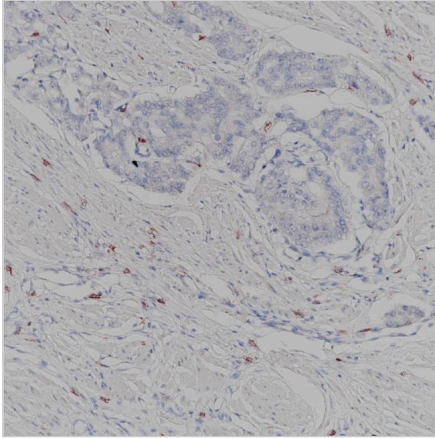
*Clone Number, Reactivity, Source/Host and Clonality can be found in the product name and Key Features section above.

DATASHEET

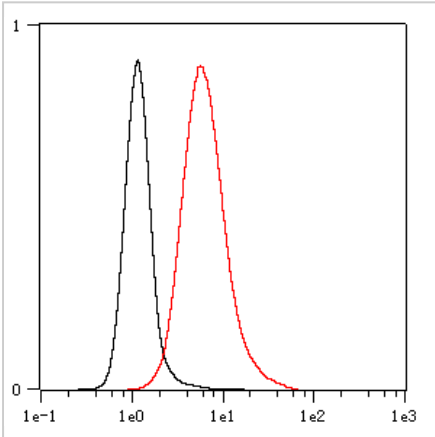
CD117 Rabbit Monoclonal Antibody(ARA808)

CAT. NO. ARA6595

DATA



Immunohistochemistry (Formalin/PFA-fixed paraffin-embedded sections) analysis of human prostate cancer tissue labelling CD117 with ARA808 at 1:400. Heat mediated antigen retrieval was performed using Tris/EDTA buffer pH 9.0.



Overlay histogram showing HeLa cells stained with ARA808 (Red). The cells were fixed with 4% paraformaldehyde (10 min) and then permeabilized with 0.1% TritonX-100 for 15 min. The cells were then incubated in the antibody (ARA808, 1:50 dilution) in 1x PBS/1% BSA for 30 min at room temperature. The secondary antibody used was a Goat Anti-Rabbit Alexa Fluor® 488 (IgG H+L) at 1:2,000 dilution for 20 min at room temperature. Unlabelled sample (Black) was used as a control.

STORAGE

Store at 4°C short term. For long term storage, store at -20°C, avoiding freeze/thaw cycles.

NOTE

For Research Use Only. Not for diagnostic, therapeutics, prophylactic or in vivo use.

More information: www.arexbio.com