

DATASHEET

CD34 Rabbit Monoclonal Antibody(ARA815)

CAT. NO. ARA6602

KEY FEATURES

Target	CD34	Source / Host	Rabbit
Reactivity	Human	Clonality	Monoclonal
Applications	WB,IHC,IF/ICC,FC,IP	Conjugation	Unconjugated
Storage	at-20°C		

BACKGROUND

Possible adhesion molecule with a role in early hematopoiesis by mediating the attachment of stem cells to the bone marrow extracellular matrix or directly to stromal cells. Could act as a scaffold for the attachment of lineage specific glycans, allowing stem cells to bind to lectins expressed by stromal cells or other marrow components. Presents carbohydrate ligands to selectins.

APPLICATION

To ensure optimal assay performance, AREX recommends conducting reagent titration tailored to each testing system for optimal detection results.

WB	1:2000-1:5000
IHC	1:6400-1:12800
IF/ICC	1:200-1:800
FC	1:2000-1:10000
IP	1:100

*Results are sample-specific. Please refer to your local assay conditions and test parameters for reference.

PRODUCT OVERVIEW

Description	Rabbit Monoclonal Antibody to CD34
Antibody Type	Primary antibody
Predicted MW	41kDa
Immunogen	A synthetic peptide corresponding to residues on the C-terminus of human CD34 was used as an immunogen.
Purification	ProA affinity purified IgG
Form / Buffer	PBS 59%, Sodium azide 0.01%, Glycerol 40%, BSA 0.90%.
Alternative Names	Hematopoietic progenitor cell antigen CD34; CD34
Gene Symbol	CD34
Entrez Gene	947(Human)
Swissprot ID	P28906

*AREX continuously optimizes our products. Webpage content may not reflect the latest updates. For inquiries, please contact info@arexbio.com or your local distributor.

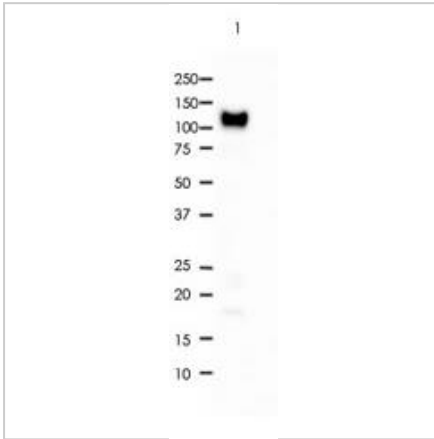
*Clone Number, Reactivity, Source/Host and Clonality can be found in the product name and Key Features section above.

DATASHEET

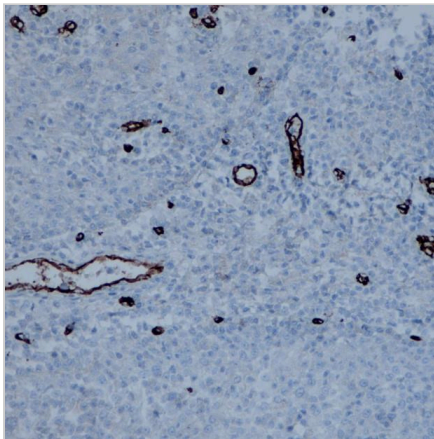
CD34 Rabbit Monoclonal Antibody(ARA815)

CAT. NO. ARA6602

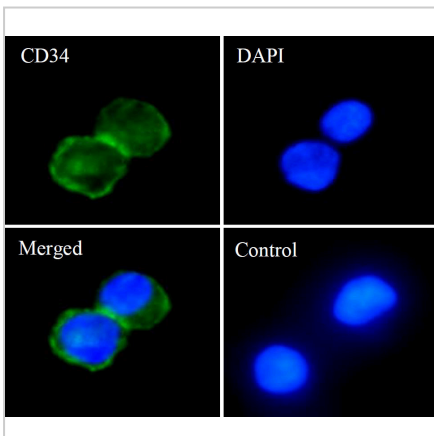
DATA



All lanes: Anti-CD34 antibody at 1:5,000 dilution Predicted MW: 41 kDa Observed MW: 120 kDa Lane 1: TF-1 Lysates at 10 µg per lane 2nd Ab: GAR HRP(H+L) 1:5,000 Exposure: 60s



Immunohistochemistry (Formalin/PFA-fixed paraffin-embedded sections) analysis of human tonsil tissue labelling CD34 with ARA815 at 1:12,800. Heat mediated antigen retrieval was performed using Tris/EDTA buffer pH 9.0.



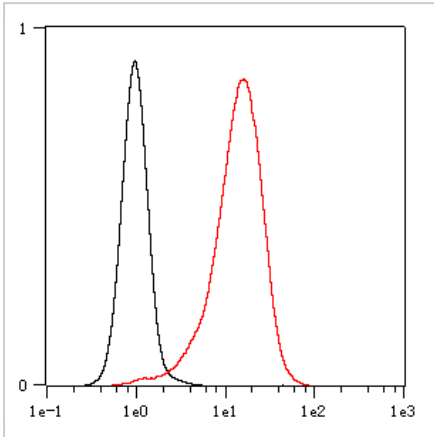
ARA815 staining CD34 in TF-1 cells by IF/ICC (immunofluorescence/immunocytochemistry). Cells were fixed with paraformaldehyde, permeabilized with 0.1% Triton X-100 and blocked with 10% goat serum for half an hour at room temperature. Samples were incubated with primary antibody (1:200) at 4°C. An Alexa Fluor® 488-conjugated Goat Anti-Rabbit IgG polyclonal was used as the secondary antibody (1:500). DAPI (blue) was used as the nuclear counter stain. Control: PBS and secondary antibody, An Alexa Fluor® 488-conjugated Goat Anti-Rabbit IgG (1:500).

DATASHEET

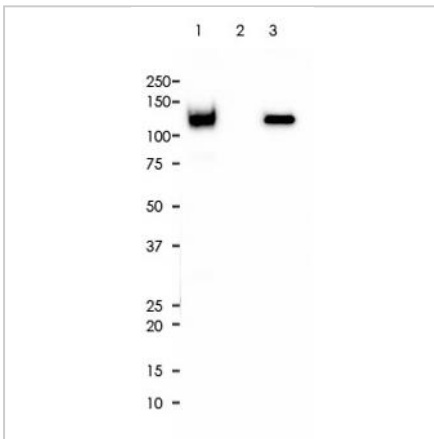
CD34 Rabbit Monoclonal Antibody(ARA815)

CAT. NO. ARA6602

DATA



Overlay histogram showing TF-1 cells stained with ARA815 (Red). The cells were fixed with 4% paraformaldehyde (10 min) and then permeabilized with 0.1% TritonX-100 for 15 min. The cells were then incubated in the antibody (ARA815, 1:10,000 dilution) in 1x PBS/1% BSA for 30 min at room temperature. The secondary antibody used was a Goat Anti-Rabbit Alexa Fluor® 488 (IgG H+L) at 1:2,000 dilution for 20 min at room temperature. Unlabelled sample (Black) was used as a control.



CD34 was immunoprecipitated from 0.4mg of TF-1 whole cell lysate with ARA815 at 1:100 dilution. 2nd Ab: GAR HRP for IP 1:500 Lane 1: ARA815 IP in TF-1 whole cell lysate Lane 2: PBS instead of ARA815 in TF-1 whole cell lysate Lane 3: TF-1 whole cell lysate, 10 µg (input) Exposure: 120s

STORAGE

Store at 4°C short term. For long term storage, store at -20°C, avoiding freeze/thaw cycles.

NOTE

For Research Use Only. Not for diagnostic, therapeutics, prophylactic or in vivo use.

More information: www.arexbio.com