

DATASHEET

OTUD6A Rabbit Polyclonal Antibody

CAT. NO. ARA6622

KEY FEATURES

Target	OTUD6A	Source / Host	Rabbit
Reactivity	Human,Mouse,Rat	Clonality	Polyclonal
Applications	WB,IHC,IF/ICC	Storage	-20°C

BACKGROUND

Deubiquitinating enzymes (DUBs; see MIM 603478) are proteases that specifically cleave ubiquitin linkages, negating the action of ubiquitin ligases. DUBA2 belongs to a DUB subfamily characterized by an ovarian tumor (OTU) domain.

APPLICATION

To ensure optimal assay performance, AREX recommends conducting reagent titration tailored to each testing system for optimal detection results.

WB	1:500 - 1:2000
IHC	1:50 - 1:200
IF/ICC	1:50 - 1:200

*Results are sample-specific. Please refer to your local assay conditions and test parameters for reference.

PRODUCT OVERVIEW

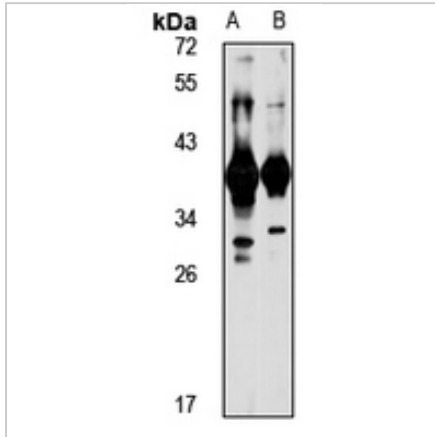
Immunogen	Recombinant fusion protein of human OTUD6A. The exact sequence is proprietary.
Purification	The antibody was purified by immunogen affinity chromatography.
Form/Buffer	Liquid in 0.42% Potassium phosphate, 0.87% Sodium chloride, pH 7.3, 30% glycerol, and 0.01% sodium azide.
Gene Name	OTUD6A
Alternative Names	DUBA2; OTU domain - containing protein 6A; DUBA - 2
Gene ID (Human)	139562
Gene ID (Mouse)	408193
Protein ID (Human)	Q7L8S5
Protein ID (Mouse)	Q6IE21

*AREX continuously optimizes our products. Webpage content may not reflect the latest updates. For inquiries, please contact info@arexbio.com or your local distributor.

*Clone Number, Reactivity, Source/Host and Clonality can be found in the product name and Key Features section above.

DATASHEET**OTUD6A Rabbit Polyclonal Antibody**

CAT. NO. ARA6622

DATA

Western blot analysis of OTUD6A expression in mouse testis (A), rat testis (B) whole cell lysates. (Predicted band size: 33 kD; Observed band size: 37 kD)

STORAGE

Shipped at 4°C. Store at -20°C for one year. Avoid repeated freeze/thaw cycles.

NOTE

For Research Use Only. Not for diagnostic, therapeutics, prophylactic or in vivo use.

More information: www.arexbio.com