

DATASHEET

Phospho-RPA2-S4/S8 Rabbit Polyclonal Antibody

CAT. NO. ARA6629

KEY FEATURES

Target	Phospho-RPA2-S4/S8	Source / Host	Rabbit
Reactivity	Rat	Clonality	Polyclonal
Applications	WB,ELISA	Storage	-20°C

BACKGROUND

Required for DNA recombination, repair and replication. The activity of RP-A is mediated by single-stranded DNA binding and protein interactions. Required for the efficient recruitment of the DNA double-strand break repair factor RAD51 to chromatin in response to DNA damage.

APPLICATION

To ensure optimal assay performance, AREX recommends conducting reagent titration tailored to each testing system for optimal detection results.

WB	1:500 - 1:1000
ELISA	Recommended starting concentration is 1 µg/mL. Please optimize based on specific assay requirements.

*Results are sample-specific. Please refer to your local assay conditions and test parameters for reference.

PRODUCT OVERVIEW

Immunogen	A synthetic phosphorylated peptide around S4 & S8 of human RPA2 (NP_002937.1).
Predicted Molecular Weight	29kDa
Actual Molecular Weight	36kDa
Localization	Nucleus, PML body.
Purification	Affinity purification
Gene ID	6118
Swiss Prot	P15927
Alternative Names	REPA2; RPA32; RP - A p32; RP - A p34; Phospho - RPA2 - S4/S8

*AREX continuously optimizes our products. Webpage content may not reflect the latest updates. For inquiries, please contact info@arexbio.com or your local distributor.

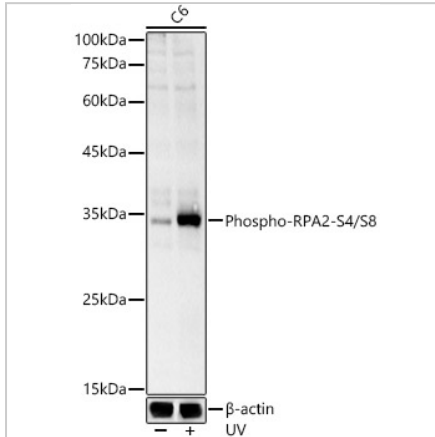
*Clone Number, Reactivity, Source/Host and Clonality can be found in the product name and Key Features section above.

DATASHEET

Phospho-RPA2-S4/S8 Rabbit Polyclonal Antibody

CAT. NO. ARA6629

DATA



Western blot analysis of lysates from C6 cells, using Phospho-RPA2-S4/S8 Rabbit pAb at 1:1000 dilution.

STORAGE

Shipped at 4°C. Store at -20°C for one year. Avoid repeated freeze/thaw cycles.

NOTE

For Research Use Only. Not for diagnostic, therapeutics, prophylactic or in vivo use.

More information: www.arexbio.com