

**DATASHEET**

**CCL2 Rabbit Polyclonal Antibody**

**CAT. NO. ARA6644**

**KEY FEATURES**

Target	CCL2	Source / Host	Rabbit
Reactivity	Human, Mouse, Rat	Clonality	Polyclonal
Applications	WB, IHC	Storage	-20°C

**BACKGROUND**

Chemotactic factor that attracts monocytes and basophils but not neutrophils or eosinophils. Augments monocyte anti-tumor activity. Has been implicated in the pathogenesis of diseases characterized by monocytic infiltrates, like psoriasis, rheumatoid arthritis or atherosclerosis. May be involved in the recruitment of monocytes into the arterial wall during the disease process of atherosclerosis.

**APPLICATION**

To ensure optimal assay performance, AREX recommends conducting reagent titration tailored to each testing system for optimal detection results.

WB	1:500 - 1:1000
IHC	1:50 - 1:200

\*Results are sample-specific. Please refer to your local assay conditions and test parameters for reference.

**PRODUCT OVERVIEW**

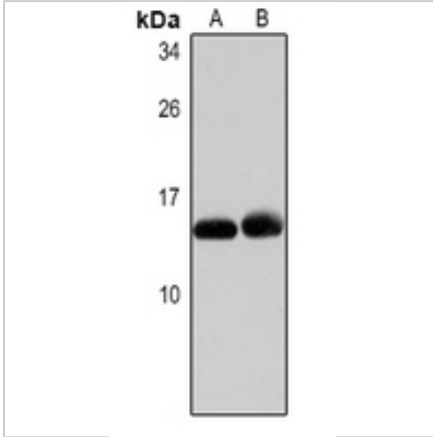
Product Description	Rabbit polyclonal antibody to CCL2
Immunogen	Recombinant full length protein of human CCL2. The exact sequence is proprietary.
Purification	The antibody was purified by immunogen affinity chromatography.
Clonality	Polyclonal
Form/Buffer	Liquid in 0.42% Potassium phosphate, 0.87% Sodium chloride, pH 7.3, 30% glycerol, and 0.01% sodium azide.
Gene Name	CCL2
Related Names	MCP1; SCYA2; C - C motif chemokine 2; HC11; Monocyte chemoattractant protein 1; Monocyte chemotactic and activating factor; MCAF; Monocyte chemotactic protein 1; MCP - 1; Monocyte secretory protein JE; Small - inducible cytokine A2
Gene ID (Human)	6347
Gene ID (Mouse)	20296
Gene ID (Rat)	24770
Protein ID (Human)	P13500
Protein ID (Mouse)	P10148

\*AREX continuously optimizes our products. Webpage content may not reflect the latest updates. For inquiries, please contact [info@arexbio.com](mailto:info@arexbio.com) or your local distributor.

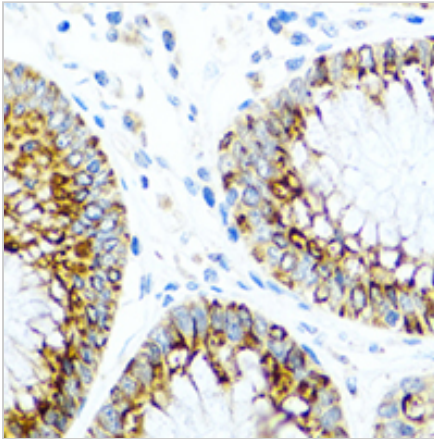
\*Clone Number, Reactivity, Source/Host and Clonality can be found in the product name and Key Features section above.

**DATASHEET****CCL2 Rabbit Polyclonal Antibody**

CAT. NO. ARA6644

**DATA**

Western blot analysis of CCL2 expression in mouse heart (A), rat lung (B) whole cell lysates. (Predicted band size: 11 kD; Observed band size: 13 kD)



Immunohistochemical analysis of CCL2 staining in human colon formalin fixed paraffin embedded tissue section. The section was pre-treated using heat mediated antigen retrieval with sodium citrate buffer (pH 6.0). The section was then incubated with the antibody at room temperature and detected using an HRP conjugated compact polymer system. DAB was used as the chromogen. The section was then counterstained with haematoxylin and mounted with DPX.

**STORAGE**

Shipped at 4°C. Store at -20°C for one year. Avoid repeated freeze/thaw cycles.

**NOTE**

For Research Use Only. Not for diagnostic, therapeutics, prophylactic or in vivo use.

More information: [www.arexbio.com](http://www.arexbio.com)