

DATASHEET

Mesothelin Rabbit Monoclonal Antibody(ARA837)

CAT. NO. ARA6651

KEY FEATURES

Target	Mesothelin	Source / Host	Rabbit
Reactivity	Human	Clonality	Monoclonal
Applications	IHC	Storage	-20°C

BACKGROUND

Mesothelin is a 40 kDa protein that is expressed in mesothelial cells. The protein was first identified by its reactivity with monoclonal antibody K1. Subsequent cloning studies showed that the mesothelin gene encodes a precursor protein that is processed to yield mesothelin which is attached to the cell membrane by a glycoposphatidylinositol linkage and a 31-kDa shed fragment named megakaryocyte-potentiating factor (MPF). Although it has been proposed that mesothelin may be involved in cell adhesion, its biological function is not known. A knockout mouse line that lacks mesothelin reproduces and develops normally. Mesothelin is over expressed in several human tumors, including mesothelioma, ovarian cancer, pancreatic adenocarcinoma, lung adenocarcinoma, and cholangiocarcinoma. Mesothelin binds MUC16 (also known as CA125), indicating that the interaction of mesothelin and MUC16 may contribute to the implantation and peritoneal spread of tumors by cell adhesion. The region (residues 296-359) consisting of 64 amino acids at the N-terminus of cell surface mesothelin has been identified as the functional binding domain (named IAB) for MUC16/CA125, suggesting the mechanism of mesothelin acting as a MUC16/CA125 functional partner in cancer development.

APPLICATION

To ensure optimal assay performance, AREX recommends conducting reagent titration tailored to each testing system for optimal detection results.

IHC	1:200 - 1:800
-----	---------------

*Results are sample-specific. Please refer to your local assay conditions and test parameters for reference.

PRODUCT OVERVIEW

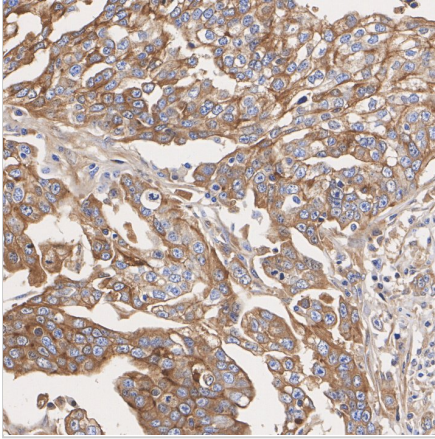
Antibody Type	Recombinant Rabbit monoclonal Antibody
Immunogen	Synthetic peptide within Human Mesothelin aa 550 to the C-terminus
Molecular Weight	Predicted band size: 69 kDa
Positive Control	HeLa cell lysate, SK-OV-3 cell lysate, OVCAR-3 cell lysate, SiHa cell lysate, NCI-H226 cell lysate, human tonsil tissue, human ovarian cancer tissue
Conjugation	unconjugated
Form/Buffer	PBS (pH7.4), 0.1% BSA, 40% Glycerol. Preservative: 0.05% Sodium Azide
Isotype	IgG
Purification	Protein A affinity purified

*AREX continuously optimizes our products. Webpage content may not reflect the latest updates. For inquiries, please contact info@arexbio.com or your local distributor.

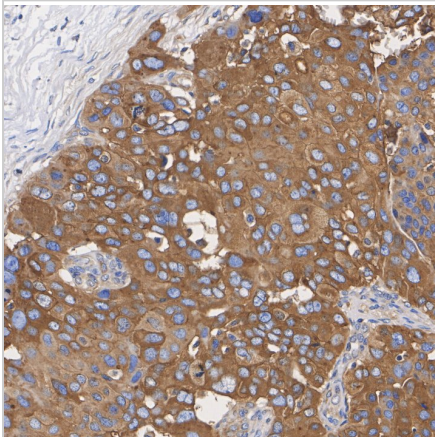
*Clone Number, Reactivity, Source/Host and Clonality can be found in the product name and Key Features section above.

DATASHEET**Mesothelin Rabbit Monoclonal Antibody(ARA837)**

CAT. NO. ARA6651

DATA

Immunohistochemical analysis of paraffin-embedded human mesothelioma tissue with Mesothelin Rabbit Monoclonal Antibody(ARA837).



Immunohistochemical analysis of paraffin-embedded human ovarian cancer tissue with Mesothelin Rabbit Monoclonal Antibody(ARA837).

STORAGE

Shipped at 4°C. Store at -20°C for one year. Avoid repeated freeze/thaw cycles.

NOTE

For Research Use Only. Not for diagnostic, therapeutics, prophylactic or in vivo use.

More information: www.arexbio.com