

**DATASHEET**

**LRP1 Rabbit Monoclonal Antibody(ARA839)**

**CAT. NO. ARA6654**

**KEY FEATURES**

Target	LRP1	Source / Host	Rabbit
Reactivity	Human, Mouse, Rat	Clonality	Monoclonal
Applications	IHC, WB, IP	Storage	-20°C

**BACKGROUND**

LRP1 is a member of the LDLR family and ubiquitously expressed in multiple tissues, though it is most abundant in vascular smooth muscle cells (SMCs), hepatocytes, and neurons. LRP1 plays a key role in intracellular signaling and endocytosis, which thus implicate it in many cellular and biological processes, including lipid and lipoprotein metabolism, protease degradation, platelet derived growth factor receptor regulation, integrin maturation and recycling, regulation of vascular tone, regulation of blood brain barrier permeability, cell growth, cell migration, inflammation, and apoptosis, as well as diseases such as neurodegenerative diseases, atherosclerosis, and cancer. The LRP1 gene encodes a 600 kDa precursor protein that is processed by furin in the trans-Golgi complex, resulting in a 515 kDa alpha-chain and an 85 kDa beta-chain associated noncovalently.

**APPLICATION**

To ensure optimal assay performance, AREX recommends conducting reagent titration tailored to each testing system for optimal detection results.

WB	1:1,000-1:5,000
IF/ICC	1-25:1:50
IHC	1:200-1:2,000
IP	1-4µg/sample

\*Results are sample-specific. Please refer to your local assay conditions and test parameters for reference.

**PRODUCT OVERVIEW**

Product Name	LRP1 Recombinant Rabbit Monoclonal Antibody
Antibody Type	Recombinant Rabbit monoclonal Antibody
Immunogen	Synthetic peptide within Human LRP1 aa 4417-4502 /4544.
Species Reactivity	Human, Mouse, Rat
Validated Applications	WB, IF-Tissue, IHC-P, IP, IHC-Fr
Molecular Weight	Predicted band size: 505 kDa
Positive Control	Mouse liver tissue lysate, Human lung tissue lysate, Rat liver tissue lysate, Rat lung tissue lysate, Mouse lung tissue lysate, Human liver tissue lysate, mouse brain tissue, rat brain tissue, rat liver tissue, human lung tissue, human liver tissue, mouse liver tissue.
Conjugation	unconjugated

\*AREX continuously optimizes our products. Webpage content may not reflect the latest updates. For inquiries, please contact [info@arexbio.com](mailto:info@arexbio.com) or your local distributor.

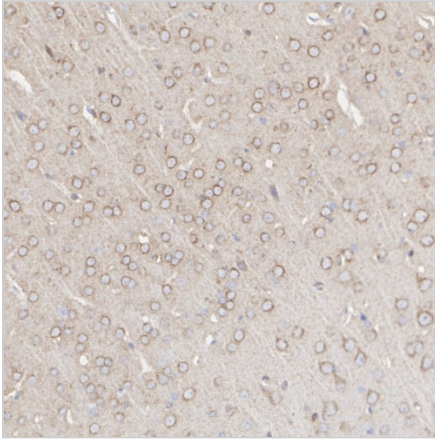
\*Clone Number, Reactivity, Source/Host and Clonality can be found in the product name and Key Features section above.

**DATASHEET**

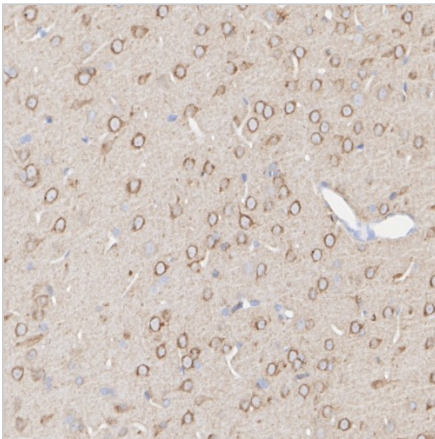
**LRP1 Rabbit Monoclonal Antibody(ARA839)**

**CAT. NO. ARA6654**

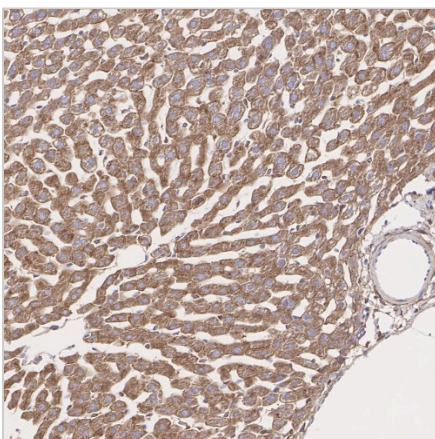
**DATA**



Immunohistochemical analysis of paraffin-embedded mouse brain tissue with Rabbit anti-LRP1 antibody (ARA839) at 1/2,000 dilution.



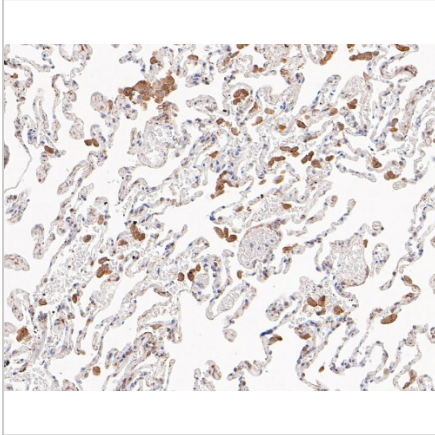
Immunohistochemical analysis of paraffin-embedded rat brain tissue with Rabbit anti-LRP1 antibody (ARA839) at 1/2,000 dilution.



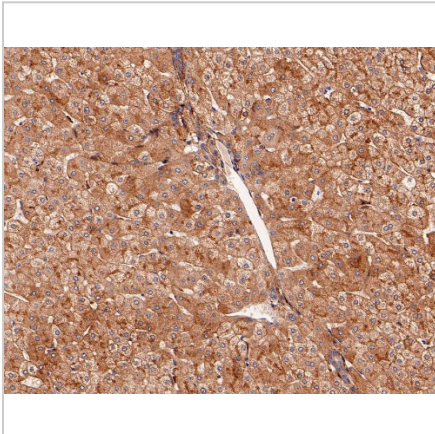
Immunohistochemical analysis of paraffin-embedded rat liver tissue with Rabbit anti-LRP1 antibody (ARA839) at 1/5,000 dilution.

**DATASHEET****LRP1 Rabbit Monoclonal Antibody(ARA839)**

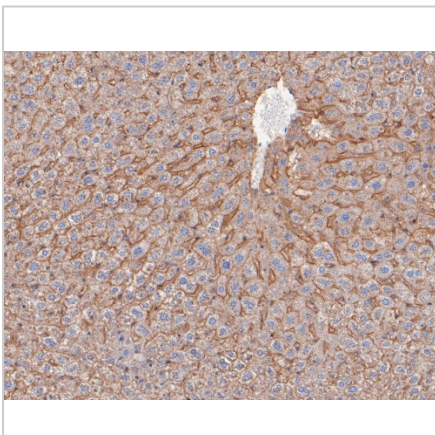
CAT. NO. ARA6654

**DATA (CONTINUED)**

Immunohistochemical analysis of paraffin-embedded human lung tissue with Rabbit anti-LRP1 antibody (ARA839) at 1/200 dilution.



Immunohistochemical analysis of paraffin-embedded human liver tissue with Rabbit anti-LRP1 antibody (ARA839) at 1/2,000 dilution.



Immunohistochemical analysis of paraffin-embedded mouse liver tissue with Rabbit anti-LRP1 antibody (ARA839) at 1/200 dilution.

**STORAGE**

Shipped at 4°C. Store at -20°C for one year. Avoid repeated freeze/thaw cycles.

**NOTE**

For Research Use Only. Not for diagnostic, therapeutics, prophylactic or in vivo use.