

DATASHEET

Connexin 43 Rabbit Monoclonal Antibody(ARA858)

CAT. NO. ARA6684

KEY FEATURES

Target	Connexin 43	Source / Host	Rabbit
Reactivity	Human	Clonality	Monoclonal
Applications	IHC	Storage	-20°C

BACKGROUND

The connexins are a group of gap junction proteins which form a hexamer to compose a connexon. Clusters of connexons form a gap junction through which low molecular weight proteins may diffuse from cell to cell. Several mammalian cells with malignant phenotypes exhibit decreased connexin expression and gap junction communication. In Src transformed cells, there is a decrease in gap junctional communication, which appears to be associated with tyrosine phosphorylation of connexin 43. Activated c-Src phosphorylates the C-terminal tail of connexin 43 on Tyr 265, resulting in a stable interaction between both proteins, which leads to inhibition of gap junctional communication. In addition to tyrosine phosphorylation, connexin 43 has also been shown to be phosphorylated on serine in the absence of Src kinases and on both serine and tyrosine in cells expressing Src kinases, such as c-Src and/or pp60v-Src. In human vascular endothelial cells, connexin 43 is posttranslationally modified during mitosis. Mitosis-specific phosphorylation of connexin 43 correlates with the transient loss of gap junction intercellular communication and redistribution of connexin 43.

APPLICATION

To ensure optimal assay performance, AREX recommends conducting reagent titration tailored to each testing system for optimal detection results.

IHC	1:2,000-1:5,000
-----	-----------------

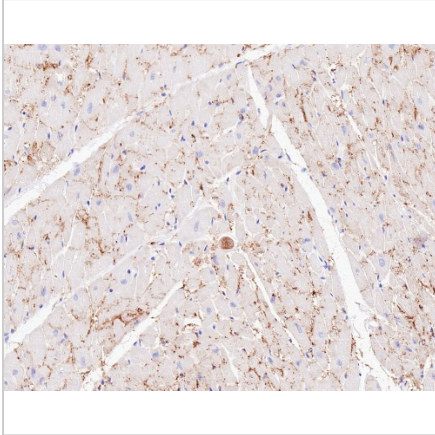
*Results are sample-specific. Please refer to your local assay conditions and test parameters for reference.

PRODUCT OVERVIEW

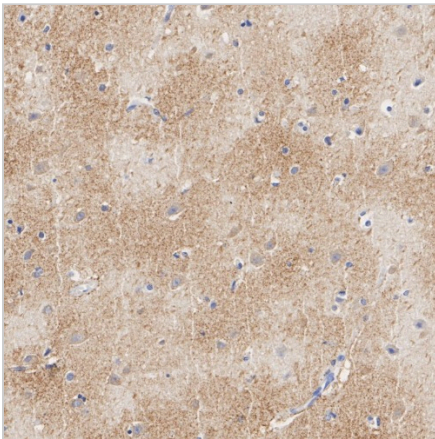
Antibody Type	Recombinant Rabbit monoclonal Antibody
Immunogen	Recombinant protein within human Connexin 43 aa 219 - 382
Molecular Weight	Predicted band size: 43 kDa
Positive Control	A549 cell lysate, PC-12 cell lysate, mouse heart lysate, human heart tissue, human testis tissue
Conjugation	unconjugated
Form/Buffer	PBS (pH7.4), 0.1% BSA, 40% Glycerol. Preservative: 0.05% Sodium Azide
Isotype	IgG
Purification	Protein A affinity purified

*AREX continuously optimizes our products. Webpage content may not reflect the latest updates. For inquiries, please contact info@arexbio.com or your local distributor.

*Clone Number, Reactivity, Source/Host and Clonality can be found in the product name and Key Features section above.

DATASHEET**Connexin 43 Rabbit Monoclonal Antibody(ARA858)****CAT. NO. ARA6684****DATA**

Immunohistochemical analysis of paraffin-embedded human heart tissue with Connexin 43 Rabbit Monoclonal Antibody(ARA858).



Immunohistochemical analysis of paraffin-embedded human brain tissue with Connexin 43 Rabbit Monoclonal Antibody(ARA858).

STORAGE

Shipped at 4°C. Store at -20°C for one year. Avoid repeated freeze/thaw cycles.

NOTE

For Research Use Only. Not for diagnostic, therapeutics, prophylactic or in vivo use.

More information: www.arexbio.com