

DATASHEET

NM23 Mouse Monoclonal Antibody(ARA868)

CAT. NO. ARA6694

KEY FEATURES

Target	NM23	Source / Host	Mouse
Reactivity	Human	Clonality	Monoclonal
Applications	IHC	Storage	-20°C

BACKGROUND

Major role in the synthesis of nucleoside triphosphates other than ATP. The ATP gamma phosphate is transferred to the NDP beta phosphate via a ping-pong mechanism, using a phosphorylated active-site intermediate. Possesses nucleoside-diphosphate kinase, serine/threonine-specific protein kinase, geranyl and farnesyl pyrophosphate kinase, histidine protein kinase and 3'-5' exonuclease activities. Involved in cell proliferation, differentiation and development, signal transduction, G protein-coupled receptor endocytosis, and gene expression. Required for neural development including neural patterning and cell fate determination. During GZMA-mediated cell death, works in concert with TREX1. NME1 nicks one strand of DNA and TREX1 removes bases from the free 3' end to enhance DNA damage and prevent DNA end reannealing and rapid repair. Mutations in this gene have been identified in aggressive neuroblastomas. Two transcript variants encoding different isoforms have been found for this gene. Co-transcription of this gene and the neighboring downstream gene (NME2) generates naturally-occurring transcripts (NME1-NME2), which encodes a fusion protein comprised of sequence sharing identity with each individual gene product.

APPLICATION

To ensure optimal assay performance, AREX recommends conducting reagent titration tailored to each testing system for optimal detection results.

IHC	1:1000
-----	--------

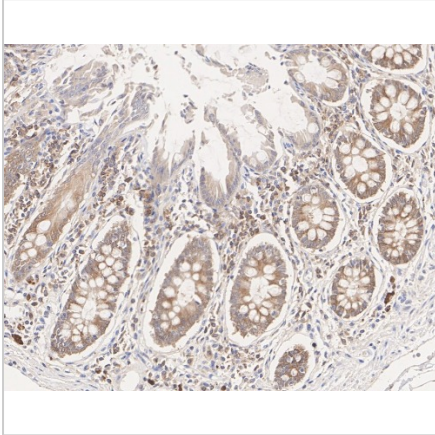
*Results are sample-specific. Please refer to your local assay conditions and test parameters for reference.

PRODUCT OVERVIEW

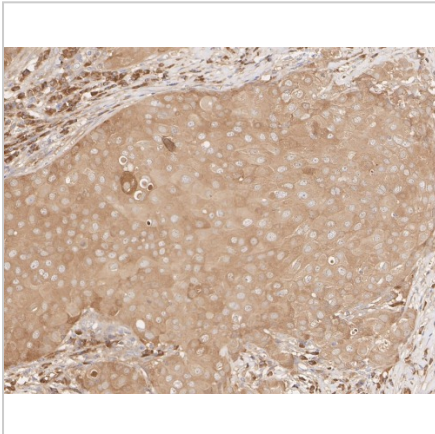
Antibody Type	Recombinant Mouse Monoclonal Antibody
Immunogen	Synthetic peptide within Human NME1 aa 78-126 / 152
Molecular Weight	Predicted band size: 17 kDa
Positive Control	MCF7 cell lysate, PC-3M cell lysate, HeLa cell lysate, HepG2 cell lysate, A549 cell lysate, NIH/3T3 cell lysate, C6 cell lysate, rat brain tissue lysate, MCF7, human breast carcinoma tissue, human colon tissue, human lymphoma tissue, mouse kidney tissue, rat kidney tissue
Conjugation	unconjugated
Form/Buffer	PBS (pH7.4), 0.1% BSA, 40% Glycerol, Preservative: 0.05% Sodium Azide
Isotype	IgG1
Purification	Protein A affinity purified

*AREX continuously optimizes our products. Webpage content may not reflect the latest updates. For inquiries, please contact info@arexbio.com or your local distributor.

*Clone Number, Reactivity, Source/Host and Clonality can be found in the product name and Key Features section above.

DATASHEET**NM23 Mouse Monoclonal Antibody(ARA868)****CAT. NO. ARA6694****DATA**

Immunohistochemical analysis of paraffin-embedded human breast carcinoma tissue with NM23 Mouse Monoclonal Antibody(ARA868)



Immunohistochemical analysis of paraffin-embedded human colon tissue with NM23 Mouse Monoclonal Antibody(ARA868)

STORAGE

Shipped at 4°C. Store at -20°C for one year. Avoid repeated freeze/thaw cycles.

NOTE

For Research Use Only. Not for diagnostic, therapeutics, prophylactic or in vivo use.

More information: www.arex.bio