

DATASHEET

Pax2 Rabbit Monoclonal Antibody(ARA870)

CAT. NO. ARA6696

KEY FEATURES

Target	Pax2	Source / Host	Rabbit
Reactivity	Human	Clonality	Monoclonal
Applications	IHC	Storage	-20°C

BACKGROUND

PAX2 encodes paired box gene 2, one of many human homologues of the Drosophila melanogaster gene prd. The central feature of this transcription factor gene family is the conserved DNA-binding paired box domain. PAX2 is believed to be a target of transcriptional suppression by the tumor suppressor gene WT1. Pax 2 is a transcription factor controlled by the signaling molecules Wnt1 and Fgf8. Pax2 along with other transcription factors Pax5, Pax8, En1, and En 2 are expressed across the Otx2-Gbx2 boundary in the mid-hindbrain region. These transcription factors work with the signaling molecules Wnt1 and Fgf8 to maintain the MHB organizer. The MHB controls midbrain and cerebellum development. Pax2 is the earliest known gene to be expressed across the Otx2-Gbx2 boundary. It is first expressed in the late primitive streak stage and is expressed in a narrow ring centered at the MHB during somitogenesis. Transgene expression of the mid-hindbrain and developing kidney is directed by Pax2. There are three distinct MHB-specific enhancers in the upstream region of Pax2. Expression at the MHB from the four-somite stage onwards is directed by the two late enhancers in the proximal and distal regions of Pax2. The early enhancer located in the intermediate region activates the mid-hindbrain region of late gastrula embryos. The activation of Pax2, Pax5, and Pax8 is a conserved feature of all vertebrates.

APPLICATION

To ensure optimal assay performance, AREX recommends conducting reagent titration tailored to each testing system for optimal detection results.

IHC	1:200-1:1000
-----	--------------

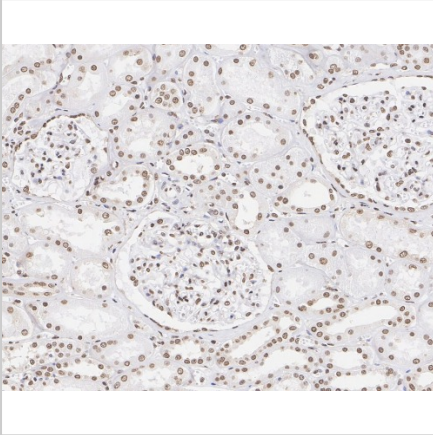
*Results are sample-specific. Please refer to your local assay conditions and test parameters for reference.

PRODUCT OVERVIEW

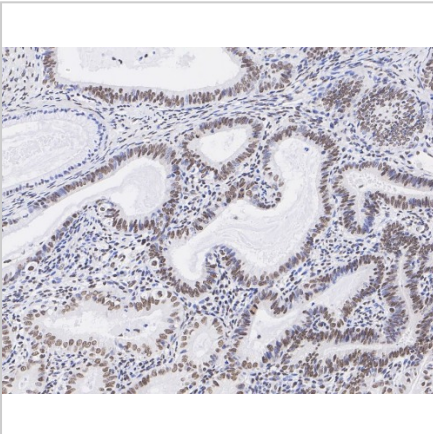
Antibody Type	Recombinant Rabbit monoclonal Antibody
Immunogen	Synthetic peptide within Human Pax2 aa 1-50 / 417
Molecular Weight	Predicted band size: 45 kDa
Positive Control	Mouse testis tissue lysates, SKOV-3, human endometrial carcinoma tissue, human fallopian tube tissue, human kidney tissue, human tonsil tissue, rat epididymis tissue, mouse epididymis tissue, mouse kidney tissue
Conjugation	unconjugated
Form/Buffer	PBS (pH7.4), 0.1% BSA, 40% Glycerol, Preservative: 0.05% Sodium Azide
Isotype	IgG
Purification	Protein A affinity purified

*AREX continuously optimizes our products. Webpage content may not reflect the latest updates. For inquiries, please contact info@arexbio.com or your local distributor.

*Clone Number, Reactivity, Source/Host and Clonality can be found in the product name and Key Features section above.

DATASHEET**Pax2 Rabbit Monoclonal Antibody(ARA870)****CAT. NO. ARA6696****DATA**

Immunohistochemical analysis of paraffin-embedded human endometrial carcinoma tissue with Pax2 Rabbit Monoclonal Antibody(ARA870)



Immunohistochemical analysis of paraffin-embedded human kidney tissue with Pax2 Rabbit Monoclonal Antibody(ARA870)

STORAGE

Shipped at 4°C. Store at -20°C for one year. Avoid repeated freeze/thaw cycles.

NOTE

For Research Use Only. Not for diagnostic, therapeutics, prophylactic or in vivo use.

More information: www.arexbio.com