

DATASHEET

L-Lactyl Lysine Rabbit Monoclonal Antibody(ARA874)

CAT. NO. ARA6700

KEY FEATURES

Target	L-Lactyl Lysine	Source / Host	Rabbit
Reactivity	Human, Mouse	Clonality	Monoclonal
Applications	WB, IHC, ChIP, IP	Storage	-20°C

BACKGROUND

Lactate, previously recognized solely as an energy source and metabolic byproduct, has now emerged as a crucial player in cancer biology, especially within the scope of the Warburg effect and its intricate interplay with various cellular processes, including angiogenesis, hypoxia, polarization of macrophages, and T cell activation. Recent investigations have unveiled an unprecedented function of lactate in the realm of histone modification, specifically through lysine L-lactylation, which exerts regulatory control over gene expression. The extent and dynamics of this modification are highly reliant on lactate levels within the cellular microenvironment and can be modulated through the introduction of extracellular lactate in cultured cells or the stimulation of intracellular glycolysis. The acetyltransferase p300 is responsible for introducing lysine L-lactylation, while Class I histone deacetylases (HDAC 1-3) have been identified as an eraser of the lactylation marks on histones.

APPLICATION

To ensure optimal assay performance, AREX recommends conducting reagent titration tailored to each testing system for optimal detection results.

WB	1:500 - 1:1000
IHC	1:200 - 1:1000
ChIP	6 µg / 5×10 ⁶ cells
IP	1:25 - 1:100

*Results are sample-specific. Please refer to your local assay conditions and test parameters for reference.

PRODUCT OVERVIEW

Isotype	IgG
Conjugate	Unconjugated
Synonyms	Kla, L-la
UniProt ID	/
Immunogen	L-lactylated lysine peptides
MW (kDa)	Multiple
Specificity	Anti-L-Lactyllysine Rabbit mAb detects proteins with L-lactylated lysine residues. This pan antibody recognizes L-lactylated lysine independent of its surrounding sequences.
Purity	Protein A purified
Constituents	PBS, Glycerol, BSA

*AREX continuously optimizes our products. Webpage content may not reflect the latest updates. For inquiries, please contact info@arexbio.com or your local distributor.

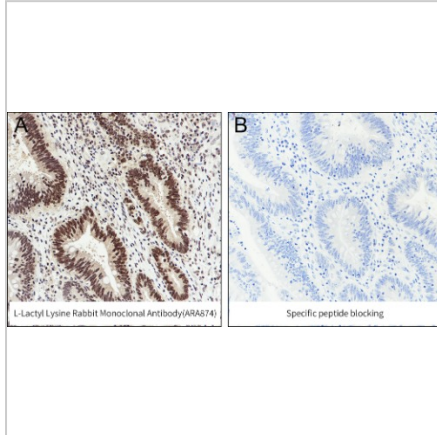
*Clone Number, Reactivity, Source/Host and Clonality can be found in the product name and Key Features section above.

DATASHEET

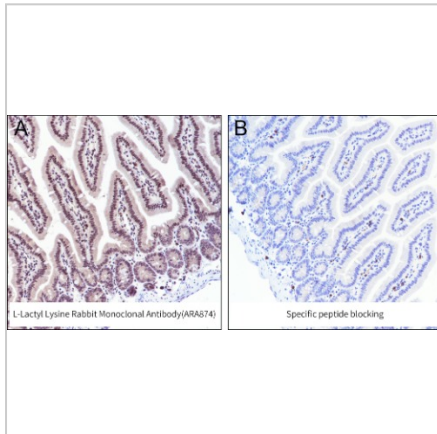
L-Lactyl Lysine Rabbit Monoclonal Antibody(ARA874)

CAT. NO. ARA6700

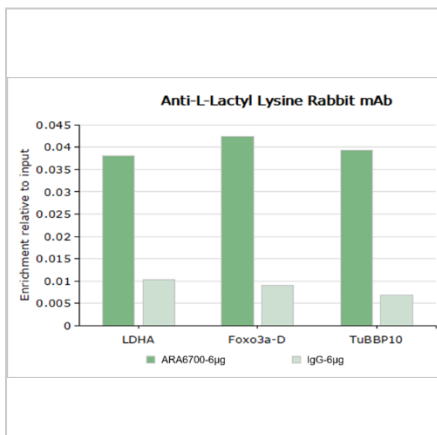
DATA



IHC:Human colon cancer



IHC: Mouse intestine



ChIP:MCF-7 cells

STORAGE

Shipped at 4°C. Store at -20°C for one year. Avoid repeated freeze/thaw cycles.

NOTE

For Research Use Only. Not for diagnostic, therapeutics, prophylactic or in vivo use.

More information: www.arexbio.com