

DATASHEET

MTAP Rabbit Monoclonal Antibody(ARA878)

CAT. NO. ARA6705

KEY FEATURES

Target	MTAP	Source / Host	Rabbit
Reactivity	Human, Mouse, Rat	Clonality	Monoclonal
Applications	IHC	Storage	-20°C

BACKGROUND

S-methyl-5'-thioadenosine phosphorylase (MTAP) is an enzyme in humans responsible for polyamine metabolism. It is encoded by the methylthioadenosine phosphorylase (MTAP) gene on chromosome 9. Multiple alternatively spliced transcript variants have been described for this gene, but their full-length natures remain unknown. This gene encodes an enzyme that plays a major role in polyamine metabolism and is important for the salvage of both adenine and methionine. It is responsible for the first step in this pathway, where it catalyzes the reversible phosphorylation of MTA to adenine and 5-methylthioribose-1-phosphate. This takes place after MTA is generated from S-adenosylmethionine.

APPLICATION

To ensure optimal assay performance, AREX recommends conducting reagent titration tailored to each testing system for optimal detection results.

IHC	1:100-1:500
-----	-------------

*Results are sample-specific. Please refer to your local assay conditions and test parameters for reference.

PRODUCT OVERVIEW

Antibody Type	Recombinant Rabbit monoclonal Antibody
Immunogen	Recombinant protein within Human MTAP aa 184 - 283 / 283
Molecular Weight	Predicted band size: 31 kDa
Positive Control	HeLa cell lysate, NIH/3T3 cell lysate, C6 cell lysate, NIH/3T3, mouse liver tissue
Conjugation	unconjugated
Form/Buffer	1*TBS (pH7.4), 0.05% BSA, 40% Glycerol. Preservative: 0.05% Sodium Azide
Isotype	IgG
Purification	Protein A affinity purified

*AREX continuously optimizes our products. Webpage content may not reflect the latest updates. For inquiries, please contact info@arexbio.com or your local distributor.

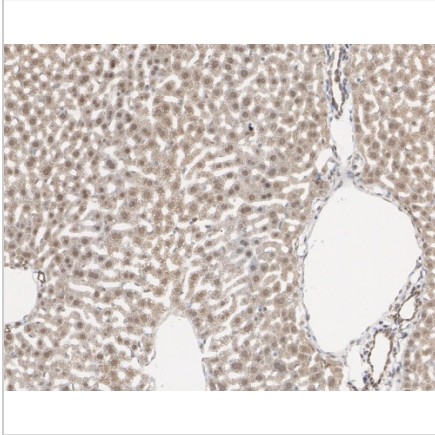
*Clone Number, Reactivity, Source/Host and Clonality can be found in the product name and Key Features section above.

DATASHEET

MTAP Rabbit Monoclonal Antibody(ARA878)

CAT. NO. ARA6705

DATA



Immunohistochemical analysis of paraffin-embedded mouse liver tissue with MTAP Rabbit Monoclonal Antibody(ARA878).

STORAGE

Shipped at 4°C. Store at -20°C for one year. Avoid repeated freeze/thaw cycles.

NOTE

For Research Use Only. Not for diagnostic, therapeutics, prophylactic or in vivo use.

More information: www.arexbio.com