

## DATASHEET

# Fumarate hydratase Rabbit Monoclonal Antibody(ARA884)

CAT. NO. ARA6711

### KEY FEATURES

Target	Fumarate hydratase	Source / Host	Rabbit
Reactivity	Human, Mouse, Rat	Clonality	Monoclonal
Applications	IHC	Storage	-20°C

### BACKGROUND

Transcription factor that is involved in embryonic development, establishment of tissue-specific gene expression and regulation of gene expression in differentiated tissues. Is thought to act as a 'pioneer' factor opening the compacted chromatin for other proteins through interactions with nucleosomal core histones and thereby replacing linker histones at target enhancer and/or promoter sites. Binds DNA with the consensus sequence 5'-[AC]A[AT]T[AG]TT[GT][AG][CT]T[CT]-3' (By similarity). In embryonic development is required for notochord formation. Involved in the development of multiple endoderm-derived organ systems such as the liver, pancreas and lungs; FOXA1 and FOXA2 seem to have at least in part redundant roles. Originally described as a transcription activator for a number of liver genes such as AFP, albumin, tyrosine aminotransferase, PEPCK, etc. Interacts with the cis-acting regulatory regions of these genes. Involved in glucose homeostasis; regulates the expression of genes important for glucose sensing in pancreatic beta-cells and glucose homeostasis. Involved in regulation of fat metabolism. Binds to fibrinogen beta promoter and is involved in IL6-induced fibrinogen beta transcriptional activation.

### APPLICATION

To ensure optimal assay performance, AREX recommends conducting reagent titration tailored to each testing system for optimal detection results.

IHC	1:1000-1:2000
-----	---------------

\*Results are sample-specific. Please refer to your local assay conditions and test parameters for reference.

### PRODUCT OVERVIEW

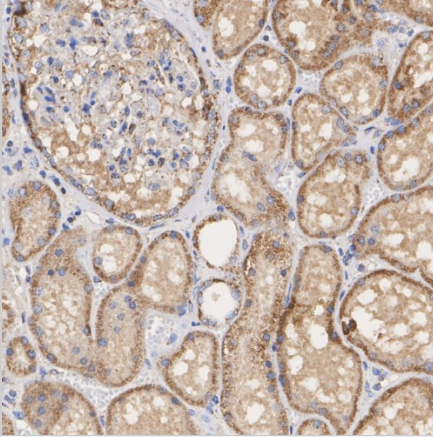
Antibody Type	Recombinant Rabbit monoclonal Antibody
Immunogen	Recombinant protein within human PUMH aa 20-510/510
Molecular Weight	Predicted band size: 55 kDa
Positive Control	HeLa cell lysate, HEK-293 cell lysate, HepG2 cell lysate, MCF7 cell lysate, COS-1 cell lysate, NIH/3T3 cell lysate, C6 cell lysate, human kidney tissue, human placenta tissue, human seminoma tissue, mouse kidney tissue, rat kidney tissue, HeLa, NIH3T3, C6
Conjugation	unconjugated
Form/Buffer	PBS (pH7.4), 0.1% BSA, 40% Glycerol, Preservative: 0.05% Sodium Azide
Isotype	IgG
Purification	Protein A affinity purified

\*AREX continuously optimizes our products. Webpage content may not reflect the latest updates. For inquiries, please contact [info@arexbio.com](mailto:info@arexbio.com) or your local distributor.

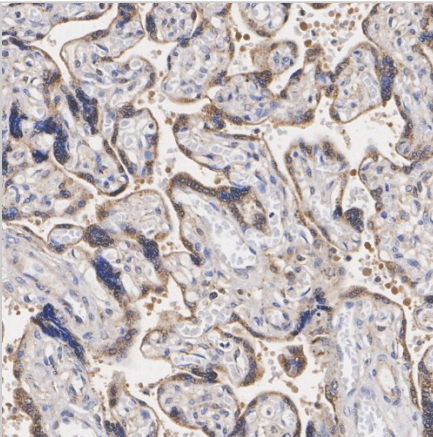
\*Clone Number, Reactivity, Source/Host and Clonality can be found in the product name and Key Features section above.

**DATASHEET****Fumarate hydratase Rabbit Monoclonal Antibody(ARA884)**

CAT. NO. ARA6711

**DATA**

Immunohistochemical analysis of paraffin-embedded human kidney tissue with Fumarate hydratase Rabbit Monoclonal Antibody(ARA884)



Immunohistochemical analysis of paraffin-embedded human placenta tissue with Fumarate hydratase Rabbit Monoclonal Antibody(ARA884)

**STORAGE**

Shipped at 4°C. Store at -20°C for one year. Avoid repeated freeze/thaw cycles.

**NOTE**

For Research Use Only. Not for diagnostic, therapeutics, prophylactic or in vivo use.

More information: [www.arexbio.com](http://www.arexbio.com)