

DATASHEET

Gli1 Rabbit Monoclonal Antibody(ARA885)

CAT. NO. ARA6712

KEY FEATURES

Target	Gli1	Source / Host	Rabbit
Reactivity	Human, Mouse, Rat	Clonality	Monoclonal
Applications	IHC	Storage	-20°C

BACKGROUND

Zinc finger protein GLI1 also known as glioma-associated oncogene is a protein that in humans is encoded by the GLI1 gene. It was originally isolated from human glioblastoma cells. The Gli proteins are the effectors of Hedgehog (Hh) signaling and have been shown to be involved in cell fate determination, proliferation and patterning in many cell types and most organs during embryo development. In the developing spinal cord the target genes of Gli proteins, that are themselves transcription factors, are arranged into a complex gene regulatory network that translates the extracellular concentration gradient of Sonic hedgehog into different cell fates along the dorsoventral axis. The Gli transcription factors activate/inhibit transcription by binding to Gli responsive genes and by interacting with the transcription complex. The Gli transcription factors have DNA binding zinc finger domains which bind to consensus sequences on their target genes to initiate or suppress transcription.

APPLICATION

To ensure optimal assay performance, AREX recommends conducting reagent titration tailored to each testing system for optimal detection results.

IHC	1:50-1:200
-----	------------

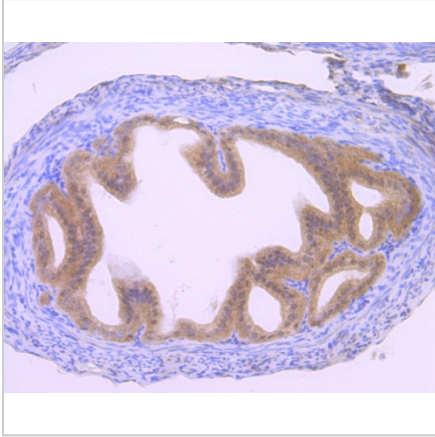
*Results are sample-specific. Please refer to your local assay conditions and test parameters for reference.

PRODUCT OVERVIEW

Antibody Type	Recombinant Rabbit monoclonal Antibody
Immunogen	Synthetic peptide within Human Gli1 aa 38-82 / 1106
Molecular Weight	Predicted band size: 118 kDa
Positive Control	K-562 cell lysate, HeLa cell lysate, Mouse brain tissue lysate, Rat brain tissue lysate, HeLa, Neuro-2a, C6, mouse fallopian tissue, rat testis tissue
Conjugation	unconjugated
Form/Buffer	1*TBS (pH7.4), 0.05% BSA, 40% Glycerol, Preservative: 0.05% Sodium Azide
Isotype	IgG
Purification	Protein A affinity purified

*AREX continuously optimizes our products. Webpage content may not reflect the latest updates. For inquiries, please contact info@arexbio.com or your local distributor.

*Clone Number, Reactivity, Source/Host and Clonality can be found in the product name and Key Features section above.

DATASHEET**Gli1 Rabbit Monoclonal Antibody(ARA885)****CAT. NO. ARA6712****DATA**

Immunohistochemical analysis of paraffin-embedded mouse fallopian tissue using Gli1 Rabbit Monoclonal Antibody(ARA885)

STORAGE

Shipped at 4°C. Store at -20°C for one year. Avoid repeated freeze/thaw cycles.

NOTE

For Research Use Only. Not for diagnostic, therapeutics, prophylactic or in vivo use.

More information: www.arexbio.com