

DATASHEET

IFITM1 Mouse Monoclonal Antibody(ARA888)

CAT. NO. ARA6715

KEY FEATURES

Target	IFITM1	Source / Host	Mouse
Reactivity	Human	Clonality	Monoclonal
Applications	IHC	Storage	-20°C

BACKGROUND

IFITM1(interferon induced transmembrane protein), also named DSPA2a and interferon-induced protein 17 (IFI17), belongs to the CD225 family. It has two transmembrane domain and serves as an IFN-induced antiviral protein that mediates cellular innate immunity to at least three major human pathogens, influenza A H1N1 virus, West Nile virus (WNV), and dengue virus , by inhibiting the early steps of replication. IFITM proteins are recently identified as viral restriction factors that inhibit infection mediated by the influenza A virus (IAV) hemagglutinin (HA) protein. Also they serve as important components of the innate immune system to restrict HIV-1 infection.

APPLICATION

To ensure optimal assay performance, AREX recommends conducting reagent titration tailored to each testing system for optimal detection results.

IHC	1:200-1:1000
-----	--------------

*Results are sample-specific. Please refer to your local assay conditions and test parameters for reference.

PRODUCT OVERVIEW

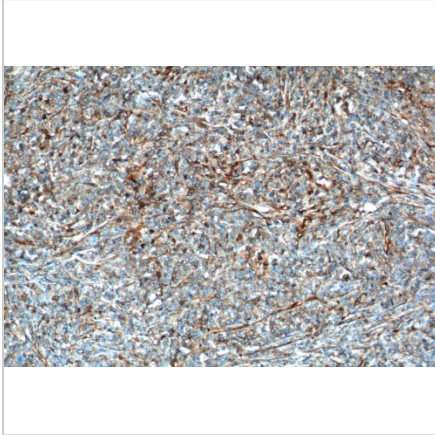
Isotype	Mouse / IgG2a
Antibody Class	Monoclonal
Product Type	Antibody
Full Name	interferon induced transmembrane protein 1 (9-27)
Synonyms	9 27, CD225, IFI17, IFITM1, IFITM1-Specific, Interferon induced protein 17, Leu 13 antigen, LEU13
Calculated Molecular Weight	14 kDa
Observed Molecular Weight	14 - 17 kDa
Gene Name	IFITM1
Conjugation	Unconjugated
Form	Liquid
Purification	Protein A purification
Form/Buffer	PBS with 0.02% sodium azide and 50% glycerol, pH 7.3

*AREX continuously optimizes our products. Webpage content may not reflect the latest updates. For inquiries, please contact info@arexbio.com or your local distributor.

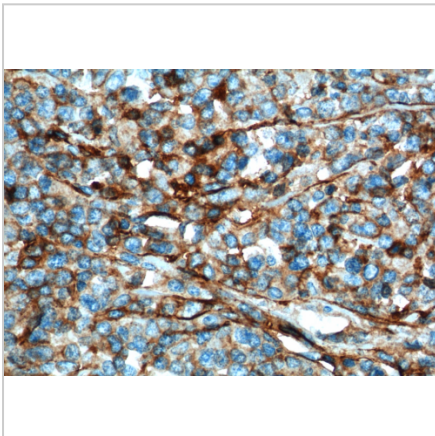
*Clone Number, Reactivity, Source/Host and Clonality can be found in the product name and Key Features section above.

DATASHEET**IFITM1 Mouse Monoclonal Antibody(ARA888)**

CAT. NO. ARA6715

DATA

Immunohistochemical staining of human lymphoma tissue sections using IFITM1 Mouse Monoclonal Antibody (ARA888).



Immunohistochemical staining of human lymphoma tissue sections using IFITM1 Mouse Monoclonal Antibody (ARA888).

STORAGE

Shipped at 4°C. Store at -20°C for one year. Avoid repeated freeze/thaw cycles.

NOTE

For Research Use Only. Not for diagnostic, therapeutics, prophylactic or in vivo use.

More information: www.arexbio.com