

**DATASHEET**

**Somatostatin receptor 2 Rabbit Monoclonal Antibody(ARA893)**

**CAT. NO. ARA6720**

**KEY FEATURES**

Target	Somatostatin receptor 2	Source / Host	Rabbit
Reactivity	Human, Mouse, Rat	Clonality	Monoclonal
Applications	IHC	Storage	-20°C

**BACKGROUND**

Receptor for somatostatin-14 and -28. This receptor is coupled via pertussis toxin sensitive G proteins to inhibition of adenylyl cyclase. In addition it stimulates phosphotyrosine phosphatase and PLC via pertussis toxin insensitive as well as sensitive G proteins. Inhibits calcium entry by suppressing voltage-dependent calcium channels. Acts as the functionally dominant somatostatin receptor in pancreatic alpha- and beta-cells where it mediates the inhibitory effect of somatostatin-14 on hormone secretion. Inhibits cell growth through enhancement of MAPK1 and MAPK2 phosphorylation and subsequent up-regulation of CDKN1B. Stimulates neuronal migration and axon outgrowth and may participate in neuron development and maturation during brain development. Mediates negative regulation of insulin receptor signaling through PTPN6. Inactivates SSTR3 receptor function following heterodimerization.

**APPLICATION**

To ensure optimal assay performance, AREX recommends conducting reagent titration tailored to each testing system for optimal detection results.

IHC	1:100-1:200
-----	-------------

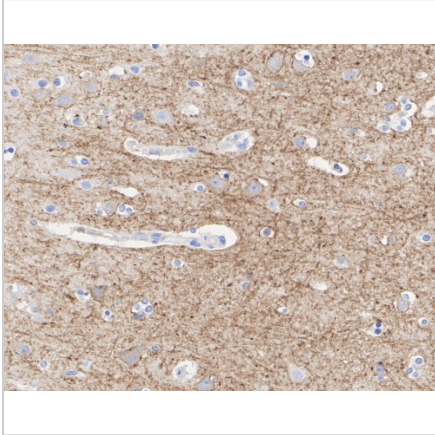
\*Results are sample-specific. Please refer to your local assay conditions and test parameters for reference.

**PRODUCT OVERVIEW**

Antibody Type	Recombinant Rabbit monoclonal Antibody
Immunogen	Synthetic peptide within human Somatostatin Receptor 2 aa 320-369 / 369
Molecular Weight	Predicted band size: 41 kDa
Positive Control	SH-SY5Y cell lysate, Mouse brain tissue lysate, Rat brain tissue lysate, mouse brain tissue, human brain tissue, rat brain tissue
Conjugation	unconjugated
Form/Buffer	1*TBS (pH7.4), 0.05% BSA, 40% Glycerol, Preservative: 0.05% Sodium Azide
Isotype	IgG
Purification	Protein A affinity purified

\*AREX continuously optimizes our products. Webpage content may not reflect the latest updates. For inquiries, please contact [info@arexbio.com](mailto:info@arexbio.com) or your local distributor.

\*Clone Number, Reactivity, Source/Host and Clonality can be found in the product name and Key Features section above.

**DATASHEET****Somatostatin receptor 2 Rabbit Monoclonal Antibody(ARA893)****CAT. NO. ARA6720****DATA**

Immunohistochemical analysis of paraffin-embedded human brain tissue with Somatostatin receptor 2 Rabbit Monoclonal Antibody(ARA893)

**STORAGE**

Shipped at 4°C. Store at -20°C for one year. Avoid repeated freeze/thaw cycles.

**NOTE**

For Research Use Only. Not for diagnostic, therapeutics, prophylactic or in vivo use.

More information: [www.arexbio.com](http://www.arexbio.com)