

DATASHEET

S100A7 Rabbit Polyclonal Antibody

CAT. NO. ARA6725

KEY FEATURES

Target	S100A7	Source / Host	Rabbit
Reactivity	Human, Mouse, Rat	Clonality	Polyclonal
Applications	WB, IHC	Storage	-20°C

BACKGROUND

The protein encoded by this gene is a member of the S100 family of proteins containing 2 EF-hand calcium-binding motifs. S100 proteins are localized in the cytoplasm and/or nucleus of a wide range of cells, and involved in the regulation of a number of cellular processes such as cell cycle progression and differentiation. S100 genes include at least 13 members which are located as a cluster on chromosome 1q21. This protein differs from the other S100 proteins of known structure in its lack of calcium binding ability in one EF-hand at the N-terminus. This protein is markedly over-expressed in the skin lesions of psoriatic patients, but is excluded as a candidate gene for familial psoriasis susceptibility. The exact function of this protein is not known.

APPLICATION

To ensure optimal assay performance, AREX recommends conducting reagent titration tailored to each testing system for optimal detection results.

WB	1:500 - 1:1000
IHC	1:50 - 1:100

*Results are sample-specific. Please refer to your local assay conditions and test parameters for reference.

PRODUCT OVERVIEW

Immunogen	KLH-conjugated synthetic peptide encompassing a sequence within the center region of human S100-A7. The exact sequence is proprietary
Purification	The antibody was purified by immunogen affinity chromatography
Form/Buffer	Liquid in 0.42% Potassium phosphate, 0.87% Sodium chloride, pH 7.3, 30% glycerol, and 0.01% sodium azide
Gene Symbol	S100A7
Alternative Names	PSOR1; S100A7C; Protein S100-A7; Psoriasin; S100 calcium-binding protein A7
Entrez Gene (Human)	6278
SwissProt (Human)	P31151

*AREX continuously optimizes our products. Webpage content may not reflect the latest updates. For inquiries, please contact info@arexbio.com or your local distributor.

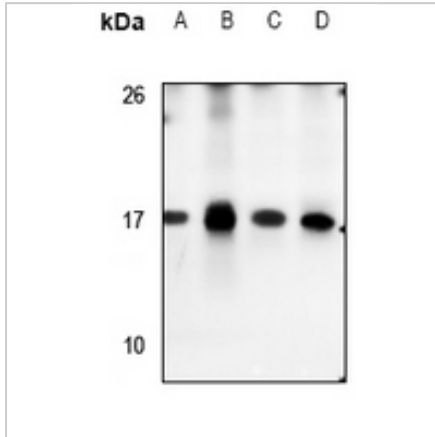
*Clone Number, Reactivity, Source/Host and Clonality can be found in the product name and Key Features section above.

DATASHEET

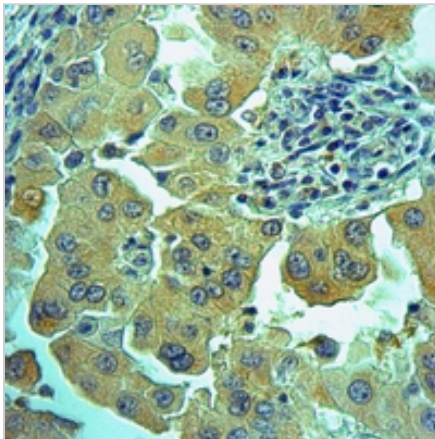
S100A7 Rabbit Polyclonal Antibody

CAT. NO. ARA6725

DATA



Western blot analysis of S100-A7 expression in mouse testis (A), HeLa (B), EC9706 (C), K562 (D) whole cell lysates. (Predicted band size: 11 kD; Observed band size: 17 kD)



Immunohistochemical analysis of S100-A7 staining in human lung cancer formalin fixed paraffin embedded tissue section. The section was pre-treated using heat mediated antigen retrieval with sodium citrate buffer (pH 6.0). The section was then incubated with the antibody at room temperature and detected using an HRP conjugated compact polymer system. DAB was used as the chromogen. The section was then counterstained with haematoxylin and mounted with DPX.

STORAGE

Shipped at 4°C. Store at -20°C for one year. Avoid repeated freeze/thaw cycles.

NOTE

For Research Use Only. Not for diagnostic, therapeutics, prophylactic or in vivo use.

More information: www.arexbio.com