

DATASHEET

SDHA Rabbit Monoclonal Antibody(ARA900)

CAT. NO. ARA6735

KEY FEATURES

Target	SDHA	Source / Host	Rabbit
Reactivity	Human, Mouse, Rat, Zebrafish	Clonality	Monoclonal
Applications	IHC	Storage	-20°C

BACKGROUND

In aerobic respiration reactions, succinate dehydrogenase (SDH) catalyzes the oxidation of succinate and ubiquinone to fumarate and ubiquinol. Four subunits comprise the SDH protein complex: a flavochrome subunit (SDHA), an iron-sulfur protein (SDHB), and two membrane-bound subunits (SDHC and SDHD) anchored to the inner mitochondrial membrane. Mutations to these subunits cause mitochondrial dysfunction, corresponding to several distinct disorders. Mutations in the membrane bound components may cause hereditary paraganglioma, while SDHA mutations are associated with juvenile encephalopathy as well as Leigh Syndrome, a severe neurological disorder. Inactivating mutations in SDHB correlate with inherited, but not necessarily sporadic, cases of pheochromocytoma.

APPLICATION

To ensure optimal assay performance, AREX recommends conducting reagent titration tailored to each testing system for optimal detection results.

IHC	1:1000-1:5000
-----	---------------

*Results are sample-specific. Please refer to your local assay conditions and test parameters for reference.

PRODUCT OVERVIEW

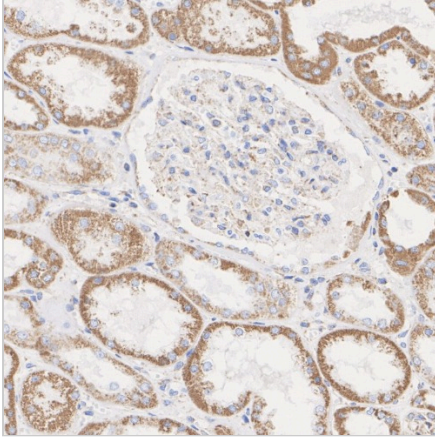
Antibody Type	Recombinant Rabbit monoclonal Antibody
Immunogen	Synthetic peptide within Human SDHA aa 581-624 / 664
Molecular Weight	Predicted band size: 73 kDa
Positive Control	Jurkat cell lysate, HL-60 cell lysate, Hela cell lysate, MCF7 cell lysate, C2C12 cell lysate, L6 cell lysate, Mouse brain tissue lysate, Mouse heart tissue lysate, Rat brain tissue lysate, Rat heart tissue lysate, Zebrafish tissue lysate, HeLa, human kidney tissue, C2C12, human heart tissue, human liver tissue, mouse colon tissue, mouse skeletal muscle tissue, mouse testis tissue, mouse kidney tissue, rat kidney tissue, rat heart tissue, zebrafish tissue
Conjugation	unconjugated
Form/Buffer	1*TBS (pH7.4), 0.05% BSA, 40% Glycerol. Preservative: 0.05% Sodium Azide
Isotype	IgG
Purification	Protein A affinity purified

*AREX continuously optimizes our products. Webpage content may not reflect the latest updates. For inquiries, please contact info@arexbio.com or your local distributor.

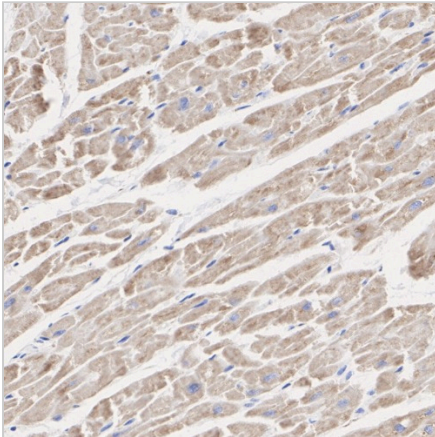
*Clone Number, Reactivity, Source/Host and Clonality can be found in the product name and Key Features section above.

DATASHEET**SDHA Rabbit Monoclonal Antibody(ARA900)**

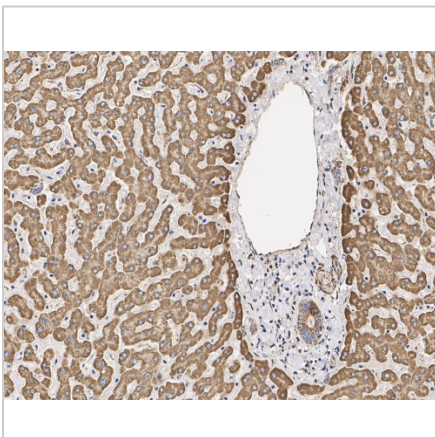
CAT. NO. ARA6735

DATA

Immunohistochemical staining of human kidney tissue using SDHA Rabbit Monoclonal Antibody (ARA900)



Immunohistochemical staining of human heart tissue using SDHA Rabbit Monoclonal Antibody (ARA900)



Immunohistochemical staining of human liver tissue using SDHA Rabbit Monoclonal Antibody (ARA900)

STORAGE

Shipped at 4°C. Store at -20°C for one year. Avoid repeated freeze/thaw cycles.

NOTE

For Research Use Only. Not for diagnostic, therapeutics, prophylactic or in vivo use.

More information: www.arexbio.com