

DATASHEET

Cathepsin D Rabbit Monoclonal Antibody(ARA902)

CAT. NO. ARA6737

KEY FEATURES

| | | | |
|--------------|-------------------|---------------|------------|
| Target | Cathepsin D | Source / Host | Rabbit |
| Reactivity | Human, Mouse, Rat | Clonality | Monoclonal |
| Applications | IHC | Storage | -20°C |

BACKGROUND

Cathepsin D is a protein that in humans is encoded by the CTSD gene. This gene encodes a lysosomal aspartyl protease composed of a protein dimer of disulfide-linked heavy and light chains, both produced from a single protein precursor. Cathepsin D is an aspartic endo-protease that is ubiquitously distributed in lysosomes. The main function of cathepsin D is to degrade proteins and activate precursors of bioactive proteins in pre-lysosomal compartments. This proteinase, which is a member of the peptidase A1 family, has a specificity similar to but narrower than that of pepsin A. Transcription of the CTSD gene is initiated from several sites, including one that is a start site for an estrogen-regulated transcript. Mutations in this gene are involved in the pathogenesis of several diseases, including breast cancer and possibly Alzheimer disease. Homozygous deletion of the CTSD gene leads to early lethality in the postnatal phase. Deficiency of CTSD gene has been reported an underlying cause of neuronal ceroid lipofuscinosis (NCL).

APPLICATION

To ensure optimal assay performance, AREX recommends conducting reagent titration tailored to each testing system for optimal detection results.

| | |
|-----|--------------|
| IHC | 1:200-1:3000 |
|-----|--------------|

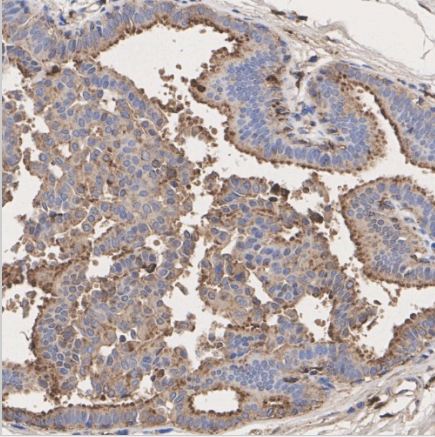
*Results are sample-specific. Please refer to your local assay conditions and test parameters for reference.

PRODUCT OVERVIEW

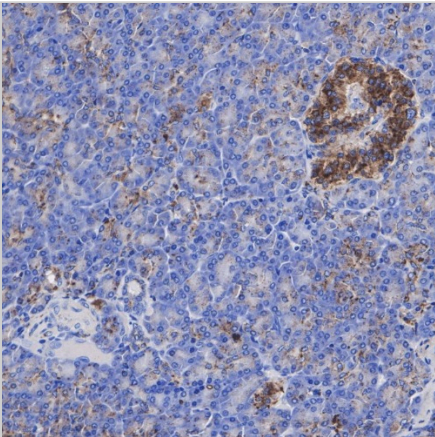
| | |
|------------------|---|
| Antibody Type | Recombinant Rabbit monoclonal Antibody |
| Immunogen | Synthetic peptide within Human Cathepsin D aa 363-412 / 412 |
| Molecular Weight | Predicted band size: 45/28 kDa |
| Positive Control | HepG2 cell lysate, MCF7 cell lysate, Neuro-2a cell lysate, Mouse brain tissue lysate, C6 cell lysate, Rat brain tissue lysate, human breast cancer tissue, human pancreas tissue, PANC-1, AGS |
| Conjugation | unconjugated |
| Form/Buffer | 1*TBS (pH7.4), 0.05% BSA, 40% Glycerol. Preservative: 0.05% Sodium Azide |
| Isotype | IgG |
| Purification | Protein A affinity purified |

*AREX continuously optimizes our products. Webpage content may not reflect the latest updates. For inquiries, please contact info@arex.bio or your local distributor.

*Clone Number, Reactivity, Source/Host and Clonality can be found in the product name and Key Features section above.

DATASHEET**Cathepsin D Rabbit Monoclonal Antibody(ARA902)****CAT. NO. ARA6737****DATA**

Immunohistochemical staining of human breast cancer tissue using Cathepsin D Rabbit Monoclonal Antibody (ARA902)



Immunohistochemical staining of human pancreas tissue using Cathepsin D Rabbit Monoclonal Antibody (ARA902)

STORAGE

Shipped at 4°C. Store at -20°C for one year. Avoid repeated freeze/thaw cycles.

NOTE

For Research Use Only. Not for diagnostic, therapeutics, prophylactic or in vivo use.

More information: www.arexbio.com